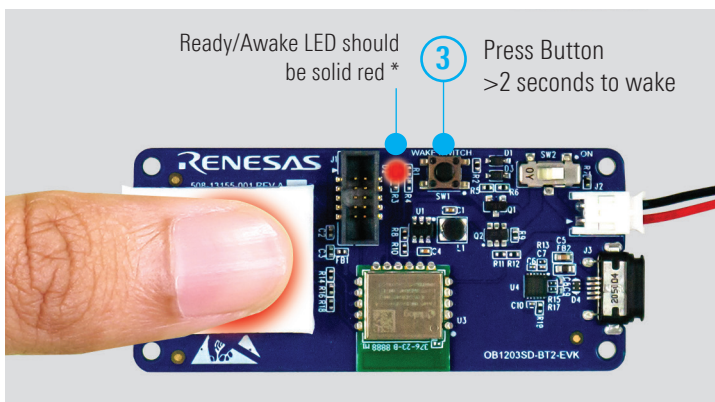
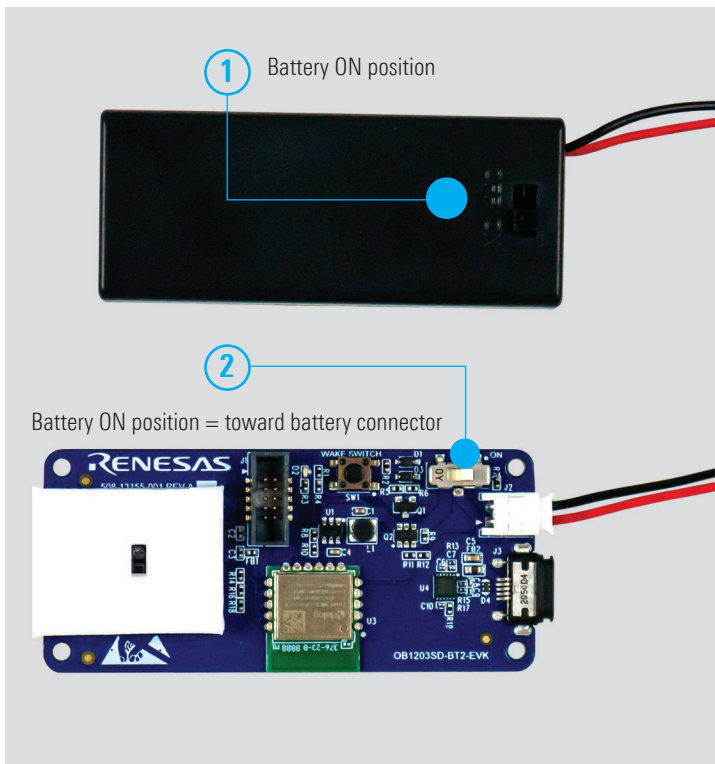


# OB1203SD-BT2-EVK QUICK START GUIDE

Evaluation kit for Heart Rate, SpO2, and Respiration Rate



Go to: [renesas.com/ob1203sd-bt2-evk/dashboard.html](https://renesas.com/ob1203sd-bt2-evk/dashboard.html)

**Note:** The Web Application runs on Microsoft Edge or Google Chrome using a Windows PC (V10 or above). It uses the computer's built in Bluetooth (BLE) capability to connect to the EVK. PC's Bluetooth must be enabled.

Compatible browsers are listed here: [caniuse.com/web-bluetooth](https://caniuse.com/web-bluetooth)

\*OB1203SD-BT2-EVK will time out after ~30s without a finger on the sensor to extend battery life.

4 Click connect



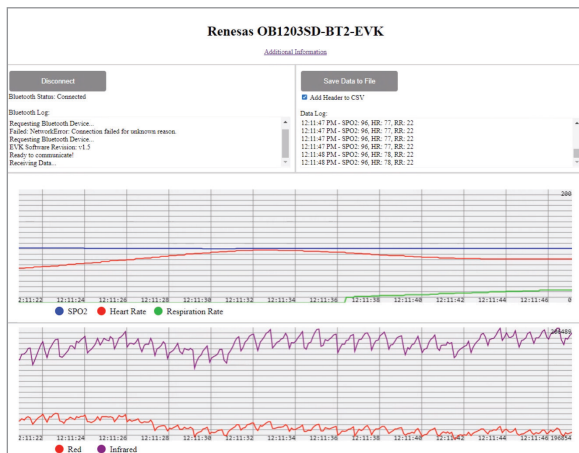
5 Select

6 Click pair



# OB1203SD-BT2-EVK QUICK START GUIDE

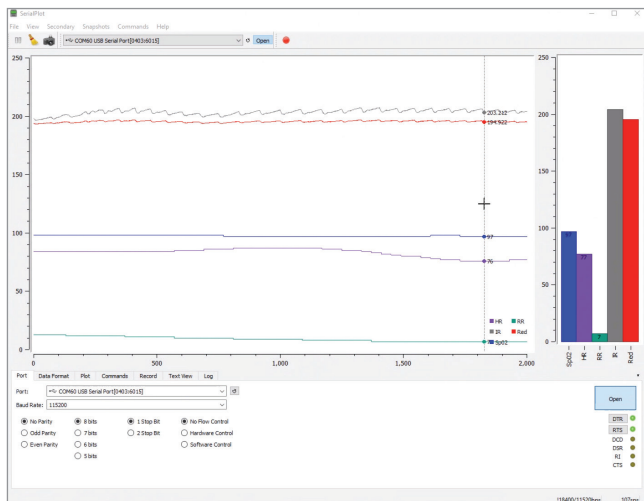
## 7 Observe and evaluate



Optionally the measurements can be observed using a USB cable and SerialPlot.

[hackaday.io/project/5334-serialplot-realtime-plotting-software/log/192838-serialplot-v012-release](https://hackaday.io/project/5334-serialplot-realtime-plotting-software/log/192838-serialplot-v012-release)

Note: USB connection must be plugged in AFTER the board is powered up (red LED on).



Port: Baud Rate 115200, No Parity, 8 bits, 1 Stop Bit, No Flow Control

Data Format: ASCII, Number of Channels: 5, Column Delimiter: comma

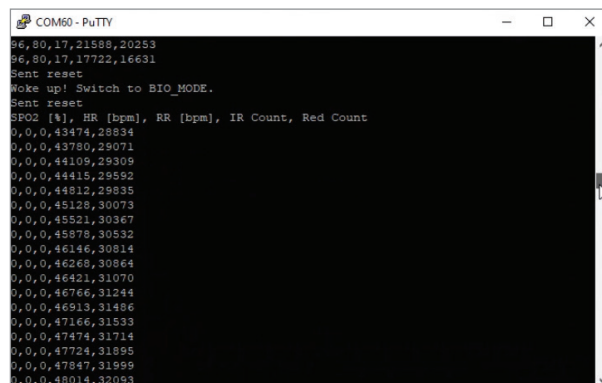
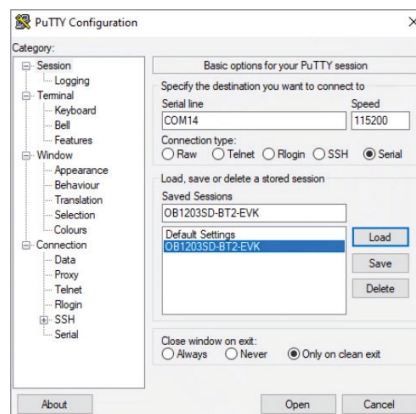
### Notice and Disclaimer

The OB1203SD-BT2-EVK is provided for reference, demonstration, and/or evaluation. No performance is guaranteed or warranted, nor is fitness or suitability for any medical device application claimed. Renesas will not indemnify customers using any part of the provided reference code. OEM is responsible for performance of products made using any of the provided reference code. For general questions contact Renesas. In addition, for medical devices Renesas strongly recommends to consult a medical device regulatory compliance advisor

Optionally the measurements can be observed using a USB cable and PuTTY

[chiark.greenend.org.uk/~sgtatham/putty/latest.html](http://chiark.greenend.org.uk/~sgtatham/putty/latest.html)

Note: USB connection must be plugged in AFTER the board is powered up (red LED on).



Renesas Electronics America Inc. | [renesas.com](http://renesas.com)  
1001 Murphy Ranch Road, Milpitas, CA 95035 | Phone: 1-888-468-3774

© 2021 Renesas Electronics America Inc. (REA). All rights reserved. All trademarks are the property of their respective owners. REA believes the information herein was accurate when given but assumes no risk as to its quality or use. All information is provided as-is without warranties of any kind, whether express, implied, statutory, or arising from course of dealing, usage, or trade practice, including without limitation as to merchantability, fitness for a particular purpose, or non-infringement. REA shall not be liable for any direct, indirect, special, consequential, incidental, or other damages whatsoever, arising from use of or reliance on the information herein, if advised of the possibility of such damages. REA reserves the right, without notice, to discontinue products or make changes to the design or specifications of its products or other information herein. All contents are protected by U.S. and international copyright laws. Except as specifically permitted herein, no portion of this material may be reproduced in any form, or by any means, without prior written permission from Renesas Electronics America Inc. Visitors or users are not permitted to modify, distribute, publish, transmit or create derivative works of any of this material for any public or commercial purposes.