



Laird Connectivity's OC35506P is a Low PIM omnidirectional, collinear antenna especially designed to complement interior or exterior mounted wireless networks operating over the CBRS band 3550-3700 MHz. An integrated RF connector is embedded in the antenna base cap for direct AP mounting. It comes complete with mast mounting hardware and includes a UV-stable radome enclosure that provides years of use without degradation to either mechanical properties or aesthetics.

### FEATURES AND BENEFITS

- Applicable for CBRS solutions
- Indoor/outdoor usage
- Weatherproof UV stable radome
- Direct to radio or mast/pole mounting
- Mast mounting hardware included
- Low PIM rated with an IP67 Ingress Protection rating.
- Conformance to RoHS

ELECTRICAL SPECIFICATIONS	
Antenna Model	OC35506P
Number of Ports	1
Operating Frequency (MHz)	3550-3700
VSWR, Avg.	1.4:1
VSWR, Max.	1.5:1
Peak Gain, Avg. (dBi)	6.1
Peak Gain, Max. (dBi)	6.8
Passive Intermodulation @ 2 x 10 Watt (dBc)	< -150
Azimuth 3 dB Beamwidth	360°
Nominal Impedance (Ohms)	50
Polarization	Linear, Vertical
Max Power/port- Ambient 25°C (W)	360°

MECHANICAL SPECIFICATIONS	
Dimensions – diameter x height – mm (inches)	25.4 x 257 (1.0 x 10.0)
Weight – kg (lbs.)	0.12 (0.27)
Radome Material	PC, UL94 V-0, UV Stable

ENVIRONMENTAL SPECIFICATIONS	
Operating Environment (Indoor or Outdoor)	Indoor and Outdoor
Operating Temperature – °C (°F)	-30 to +70°C (-22 to +158°F)
Storage Temperature – °C (°F)	-40 to +85°C (-40 to +185°F)
Wind Rating (*) Operational, kph (mph)	193 (120)
Wind Rating (*) Survival, kph (mph)	219 (136)
Ingress Protection	IP67
Material Substance Compliance	RoHS Compliant

\* Based on static load by wind at maximum velocity

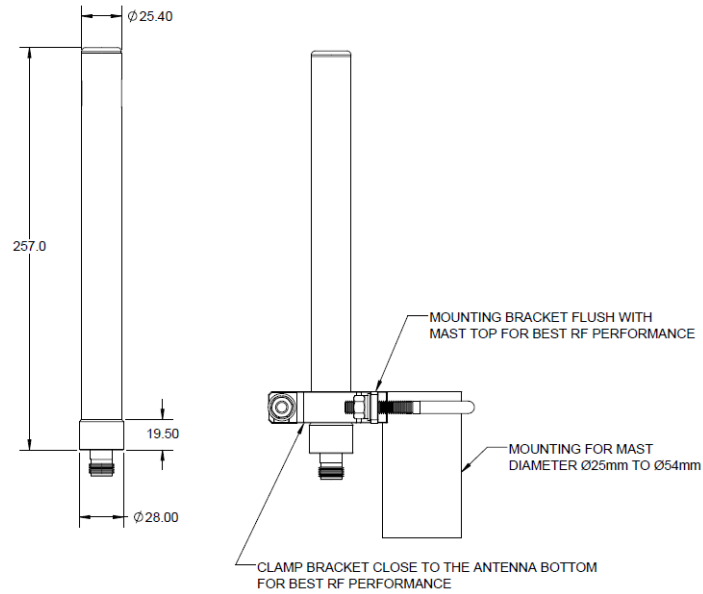
### CONFIGURATION

PART NUMBER	CONNECTOR
OC35506P-FNF	Type N female

### PACKAGING INFORMATION

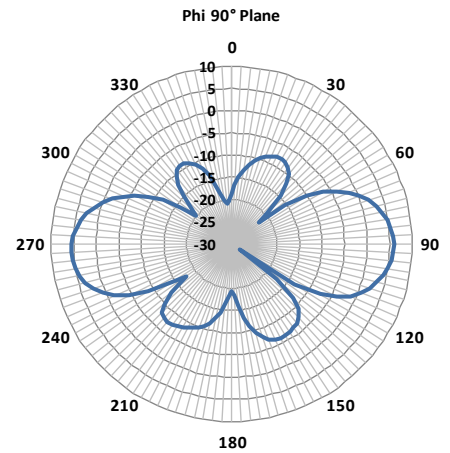
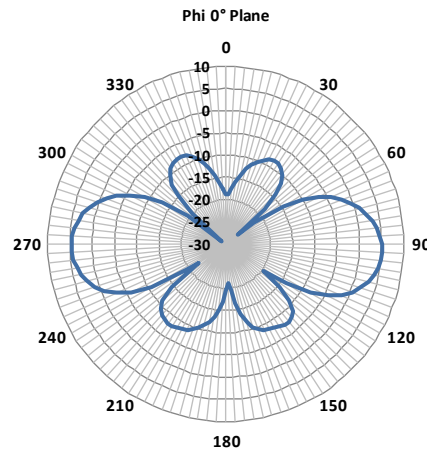
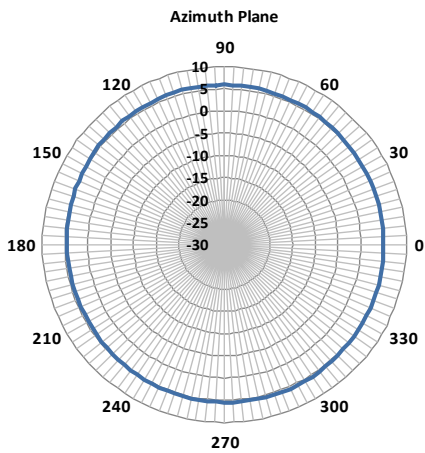
PACKAGED DIMENSIONS	CARTON	MASTER CARTON	AIR PALLET	OCEAN PALLET
Number of Antennas	1	77	462	616
Height- cm (in.)	3.4 (1.3)	42.2 (16.6)	141 (55.5)	183 (72.1)
Length- cm (in.)	43.5 (17.1)	74.4 (29.3)	120 (47.3)	120 (47.3)
Width- cm (in.)	10.2 (4.02)	44.7 (17.6)	80 (32)	80 (32)
Shipping Weight - kg (lb.)	0.64 (1.4)	50.2 (111)	313 (691)	414 (912)

### MECHANICAL DRAWING



### RADIATION PATTERNS

#### 3550 MHz



#### 3600 MHz

