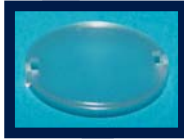




LUMILEDS™ LUXEON® K2 ADHESIVE-BACKED LENS



FEATURES / BENEFITS

- ▲ For LUXEON I, III, V & K2 LEDs
- ▲ Available in spot, diffuser, wide, and oval lenses
- ▲ Integral self-adhesive pad
- ▲ Snap-on sub-lens
- ▲ Greater than 85% efficiency

OPERATING CONDITIONS

- ▲ 85°C max acrylic temperature
- ▲ 105°C max adhesive temperature

MATERIALS/FINISH

- ▲ Optical grade PMMA acrylic

ORDERING INFORMATION

BASE LENSES			
Dialight P/N	Reference P/N	Description	Degree*
OPK21003	OPK2-1-003	Spot Base Module for LUXEON LEDs	3°
SUB-LENSES			
OPAA1DF	OPAA-1-DF	Diffuser Sub-Lens	6°
OPAA1WSL	OPAA-1-WSL	Wide Sub-Lens	12°
OPAA1OSL	OPAA-1-OSL	Oval Sub-Lens	4° X 27°
*All angles refer to half divergence			

Dialight reserves the right to make changes at any time
in order to supply the best product possible.

Dialight-Lumidrives Ltd.

York House • Wetherby Road • Long Marston, York, YO26 7NH
Tel: +44(0) 1904 739150 • Fax: +44(0) 1904 737926 • www.dialight.com



Dialight Corporation

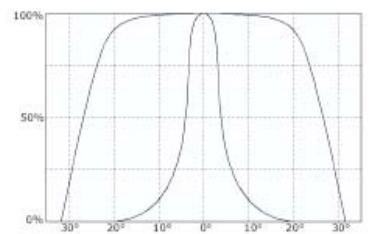
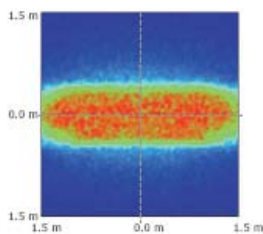
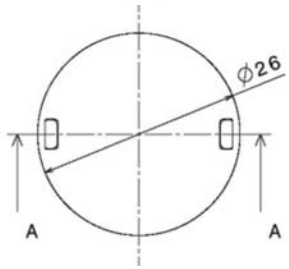
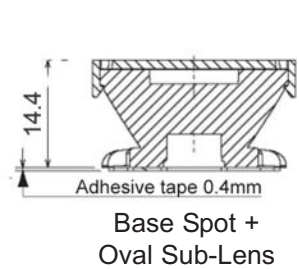
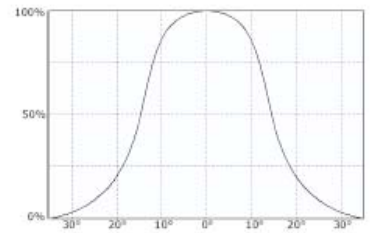
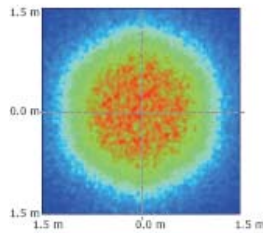
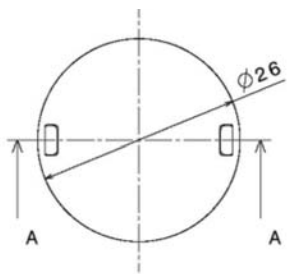
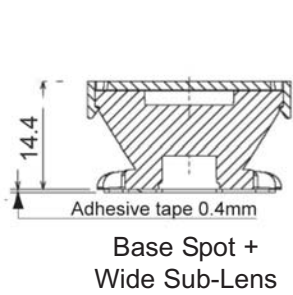
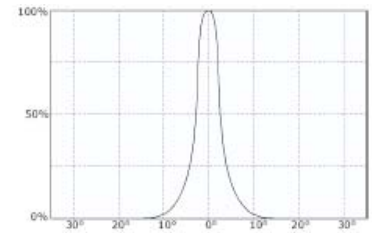
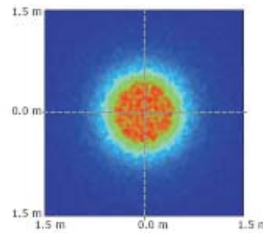
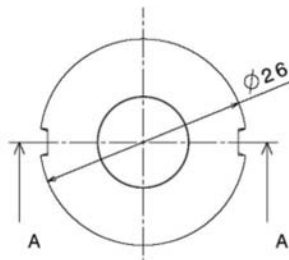
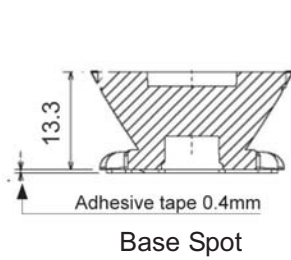
1501 Route 34 South • Farmingdale, NJ 07727 USA
Tel: (1) 732-919-3119 • Fax: (1) 732-751-5778 • www.dialight.com



MDEXLUMADBK2_C

MECHANICAL DIMENSIONS

PHOTOMETRIC DATA



Dialight reserves the right to make changes at any time
in order to supply the best product possible.

Dialight-Lumidrives Ltd.

York House • Wetherby Road • Long Marston, York, YO26 7NH

Tel: +44(0) 1904 739150 • Fax: +44(0) 1904 737926 • www.dialight.com



Dialight Corporation

1501 Route 34 South • Farmingdale, NJ 07727 USA

Tel: (1) 732-919-3119 • Fax: (1) 732-751-5778 • www.dialight.com



MDEXLUMADBK2_C