

# Rotary Potentiometer

## P160 Series



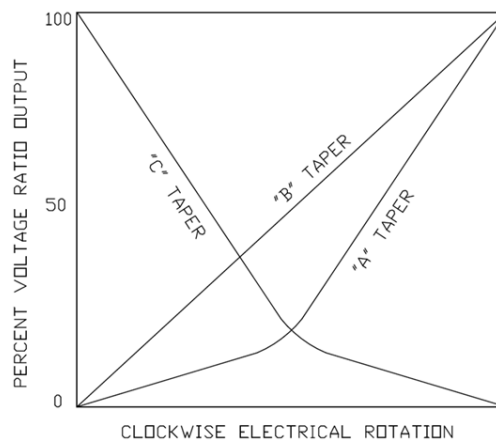
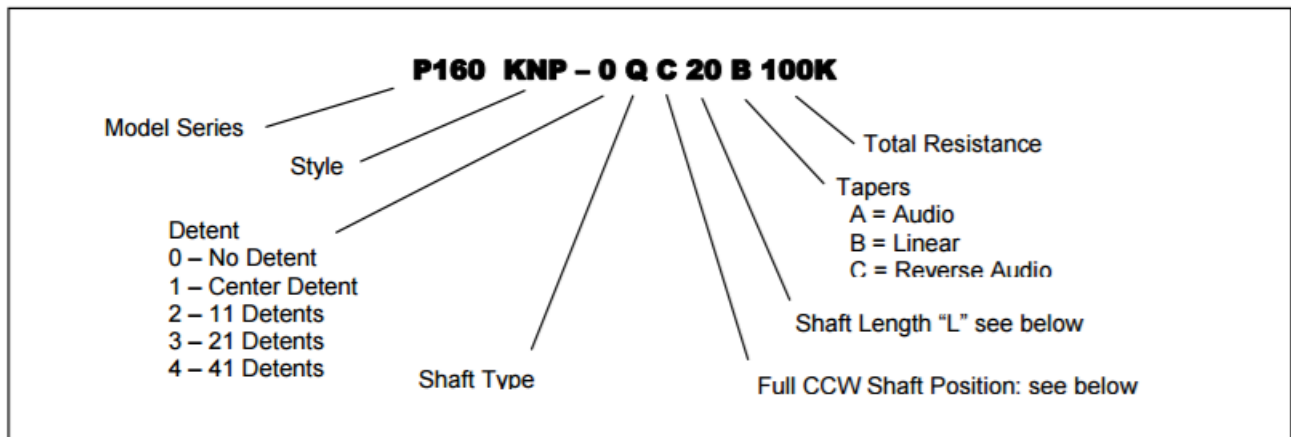
### Features:

- 16 mm
- Conductive plastic element
- 100,000 cycle life
- Metal shaft/bushing
- Multi-ganged available
- RoHS compliant



### Model Styles

|                                  |          |
|----------------------------------|----------|
| Side Adjust , Solder Lugs        | P160KNP  |
| Side Adjust , PC pins            | P160KN   |
| Side Adjust , PC Pins, Long pins | P160KN2  |
| Rear Adjust, PC pins             | P160KNPD |



### General Note

TT Electronics reserves the right to make changes in product specification without notice or liability. All information is subject to TT Electronics' own data and is considered accurate at time of going to print.

### Electrical Specifications

|                                     |                            |
|-------------------------------------|----------------------------|
| Resistance Range, Ohms              | 500-1M                     |
| Standard Resistance Tolerance       | ± 20%                      |
| Residual Resistance                 | 20 ohms max.               |
| Power rating Input Voltage, maximum | 200 Vac max.               |
| Power Rated, Watts                  | 0.2W- B taper, 0.1W-others |
| Dielectric Strength                 | 500Vac, 1 minute           |
| Insulation Resistance, Minimum      | 100M ohms at 250Vdc        |
| Sliding Noise                       | 100mV max.                 |
| Actual Electrical Travel, Nominal   | 260°                       |

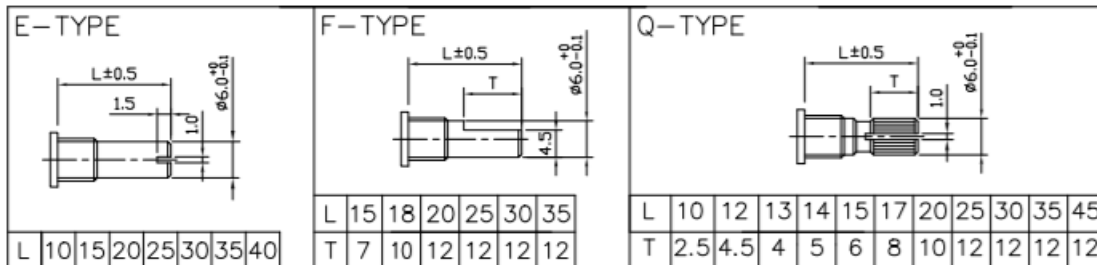
### Mechanical Specifications

|                         |                   |
|-------------------------|-------------------|
| Total Mechanical Travel | 300°± 10°         |
| Static Stop Strength    | 90 oz-in          |
| Rotational Torque       | 0.5 to 1.25 oz-in |

### Environmental Specifications

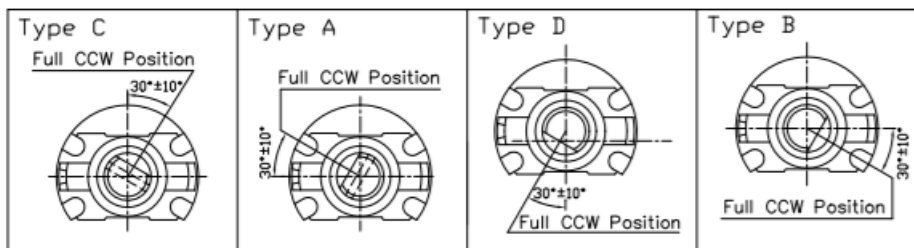
|                             |                |
|-----------------------------|----------------|
| Operating Temperature Range | -20°C to +70°C |
| Rotational Life             | 100,000 cycles |

### Shaft Types



### Shaft Position (F-Type Shaft)

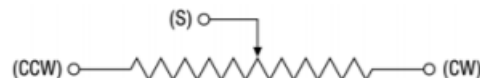
Dashed lines on Type "C" and Type "A" shows position of adjustment slot for E-Type and Q-Type shafts



### Standard Resistance Values, Ohms

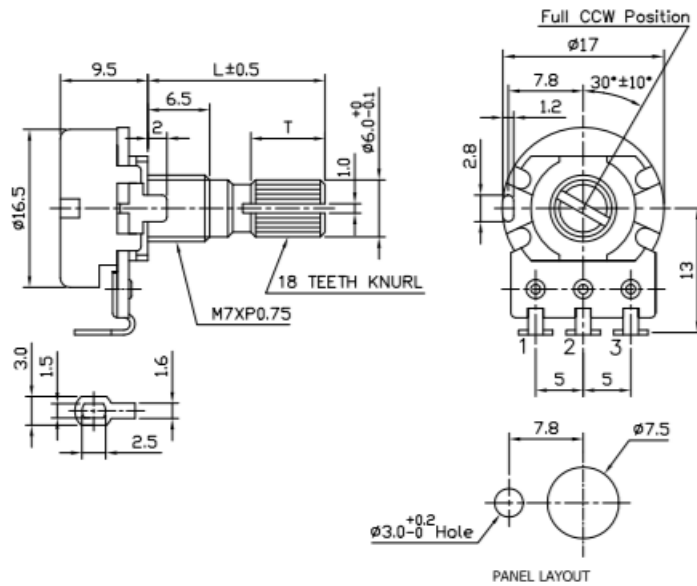
100    200    500    1K    2K    5K    10K    20K    50K    100K    200K    500K    1MEG

### Circuit Diagram

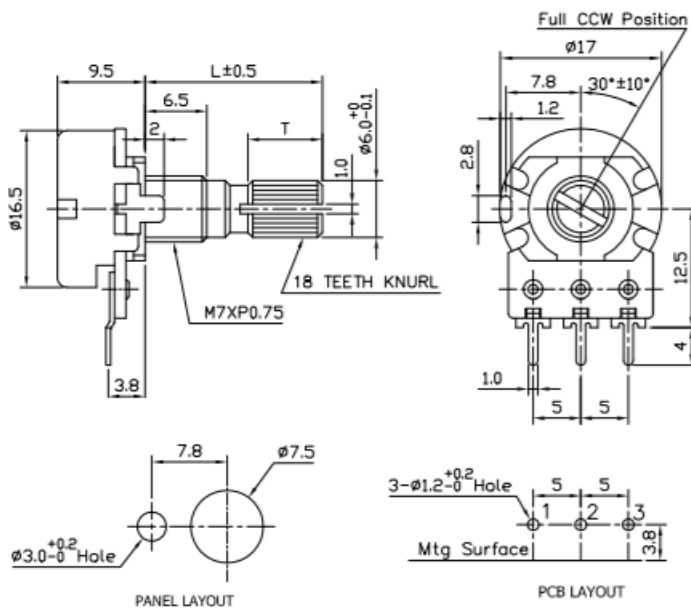


### Outline Drawings

**Model P160KNP (Side Adjust , Solder Lugs)**



**Model P160KN (Side Adjust , PC pins)**



General Note  
 TT Electronics reserves the right to make changes in product specification without notice or liability. All information is subject to TT Electronics' own data and is considered accurate at time of going to print.

TT Electronics | BI Technologies  
 Circulo de la Amistad #102 PIMSA IV Mexicali B.C. Mexico C.P 21210  
 Ph: +1 714 447 2345  
 www.ttelectronics.com/bi-technologies