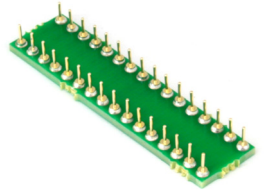
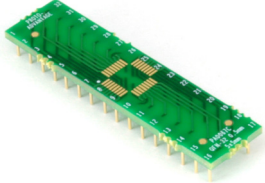


PA0067C *Proto Advantage*

Datasheet revision 1.0

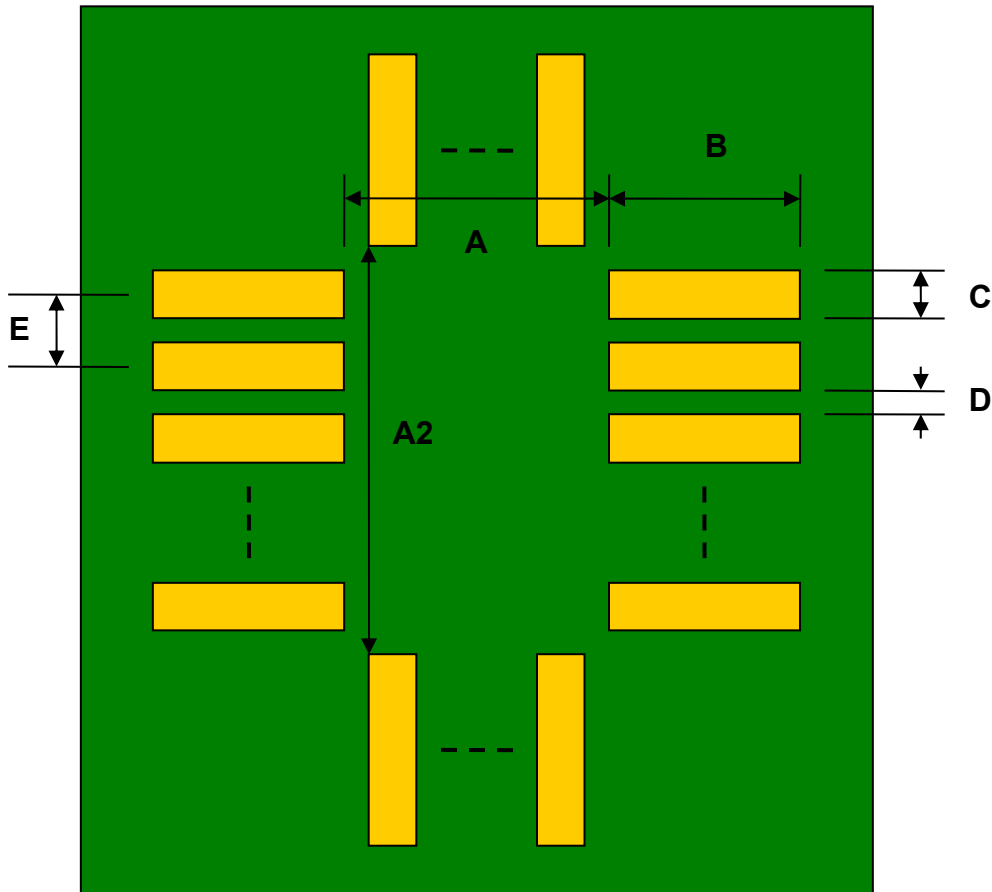
www.Proto-Advantage.com

QFN-32 to DIP-32 SMT Adapter (0.5 mm pitch, 5 x 5 mm body) *Compact Series*



| REF. | DIMENSIONS | | | | | |
|------|------------|------|------|--------|-------|------|
| | mm | | | inches | | |
| | MIN. | TYP. | MAX. | MIN. | TYP. | MAX. |
| A | | 4.30 | | | | |
| A2 | | 4.30 | | | | |
| B | | 1.50 | | | | |
| C | | 0.30 | | | | |
| D | | 0.20 | | | | |
| E | | 0.50 | | | | |
| F | | | | | 0.600 | |
| G | | | | | 0.100 | |
| H | | 0.46 | | | | |
| X | | | | | 0.400 | |
| Y | | | | | 1.600 | |

Top View (SMT Footprint)



(Representative drawing only - not to scale)

Bottom View (DIP Pins)



(Representative drawing only - not to scale)

Side View (DIP Pins)



(Representative drawing only - not to scale)