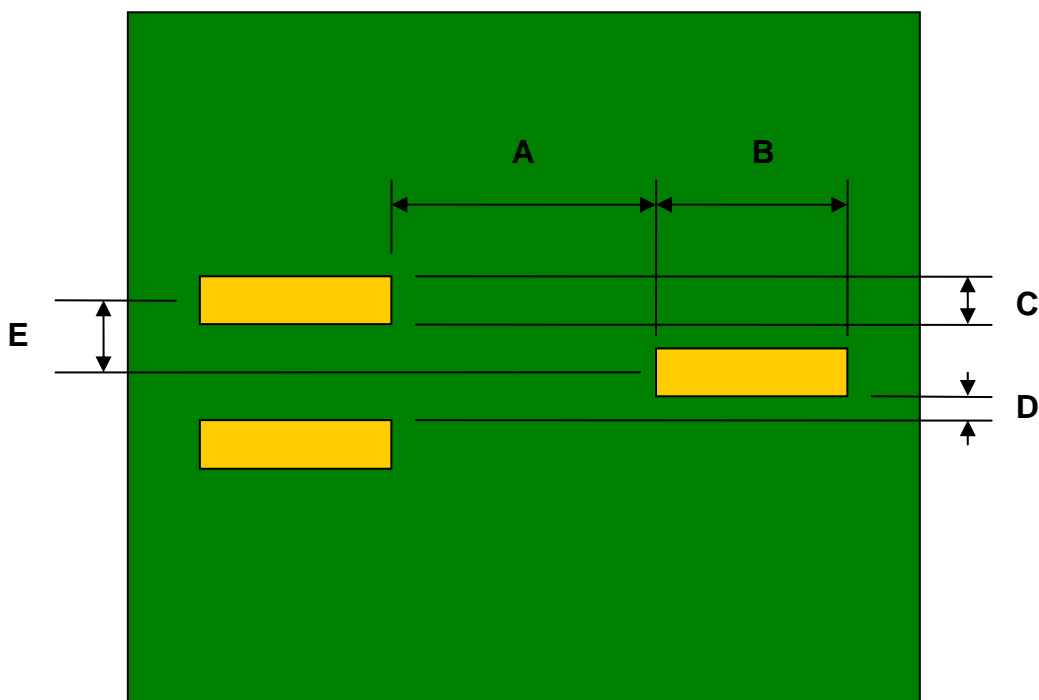


## SC70-3/SOT323 to DIP-4 (3 pins wired to IC) SMT Adapter (0.65 mm pitch)

REF.	DIMENSIONS					
	mm			inches		
	MIN.	TYP.	MAX.	MIN.	TYP.	MAX.
A		1.00				
B		1.45				
C		0.45				
D		0.20				
E		0.65				
F					0.300	
G					0.100	
H					0.025	

Top View (SMT Footprint)



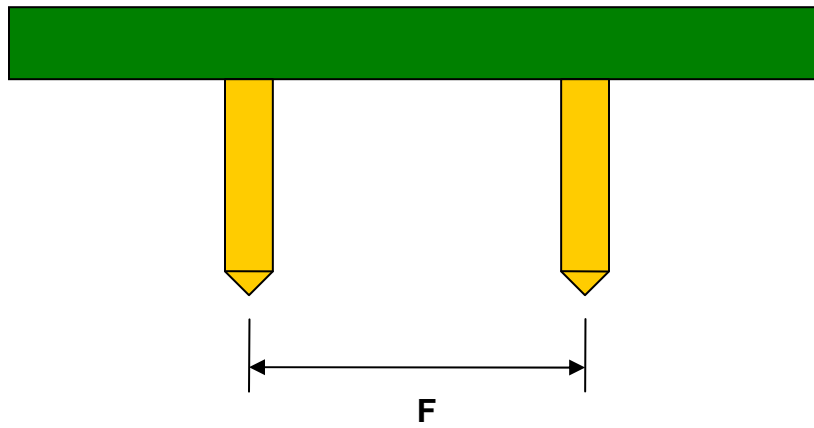
(Representative drawing only - not to scale)

### Bottom View (DIP Pins)



(Representative drawing only - not to scale)

### Side View (DIP Pins)



(Representative drawing only - not to scale)