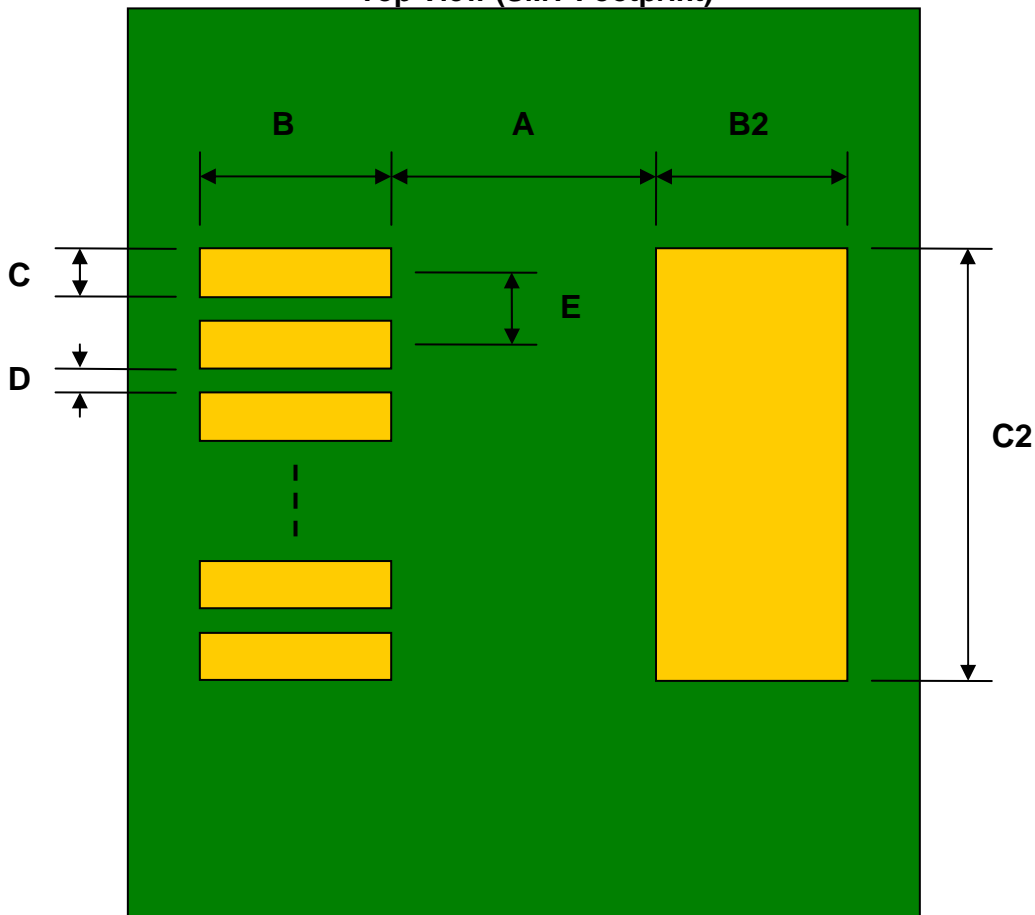


## SOT-89 to DIP-4 SMT Adapter (1.5 mm pitch)

REF.	DIMENSIONS					
	mm			inches		
	MIN.	TYP.	MAX.	MIN.	TYP.	MAX.
A		2.50				
B		2.00				
C		0.90				
B2		2.00				
C2		4.00				
D		0.60				
E		1.50				
F					0.300	
G					0.100	
H					0.025	

Top View (SMT Footprint)



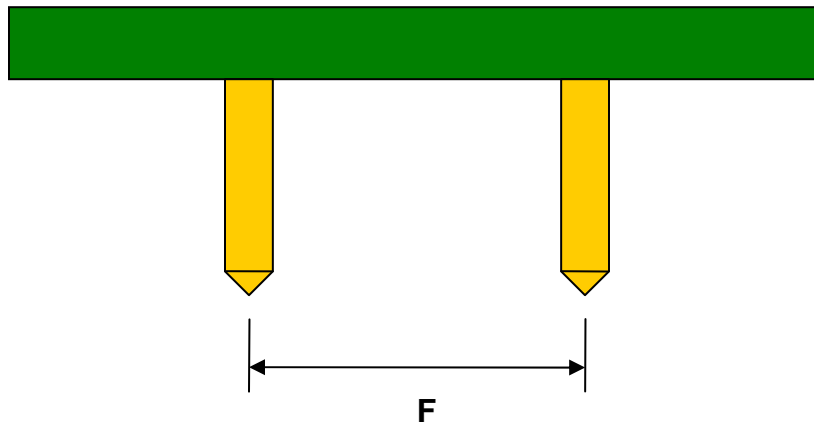
(Representative drawing only - not to scale)

### Bottom View (DIP Pins)



(Representative drawing only - not to scale)

### Side View (DIP Pins)



(Representative drawing only - not to scale)