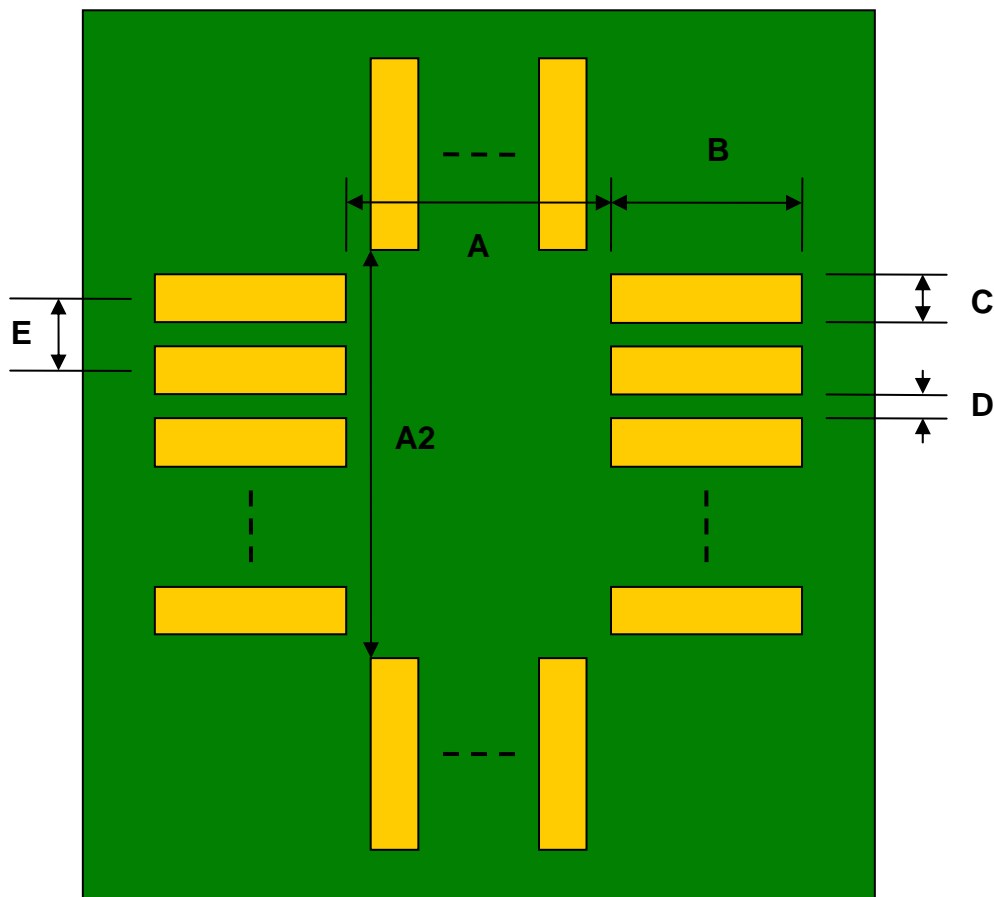


LGA-16 to DIP-16 SMT Adapter (1 mm pitch, 4.4 x 7.5 mm body)

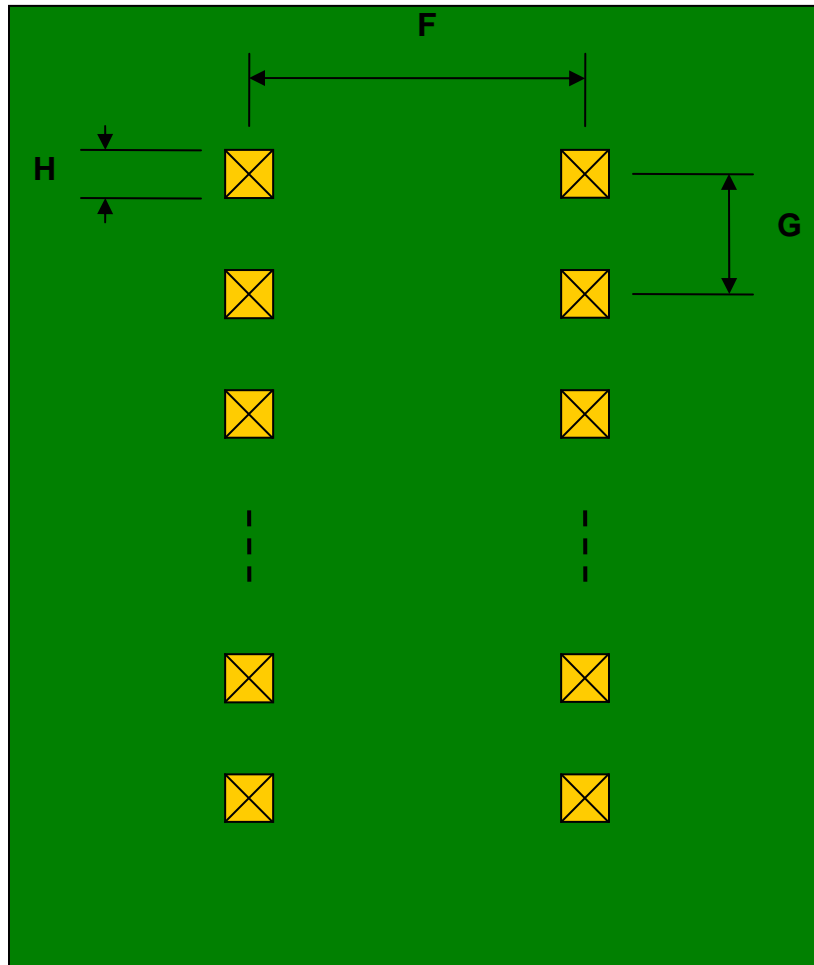
REF.	DIMENSIONS					
	mm			inches		
	MIN.	TYP.	MAX.	MIN.	TYP.	MAX.
A		2.40				
A2		5.50				
B		2.50				
C		0.65				
D		0.35				
E		1.00				
F					0.300	
G					0.100	
H					0.025	

Top View (SMT Footprint)



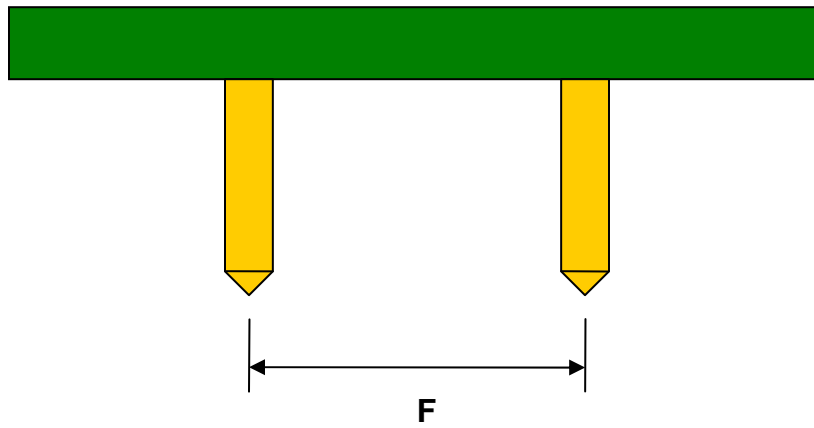
(Representative drawing only - not to scale)

Bottom View (DIP Pins)



(Representative drawing only - not to scale)

Side View (DIP Pins)



(Representative drawing only - not to scale)