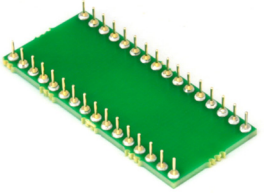
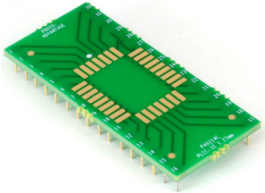
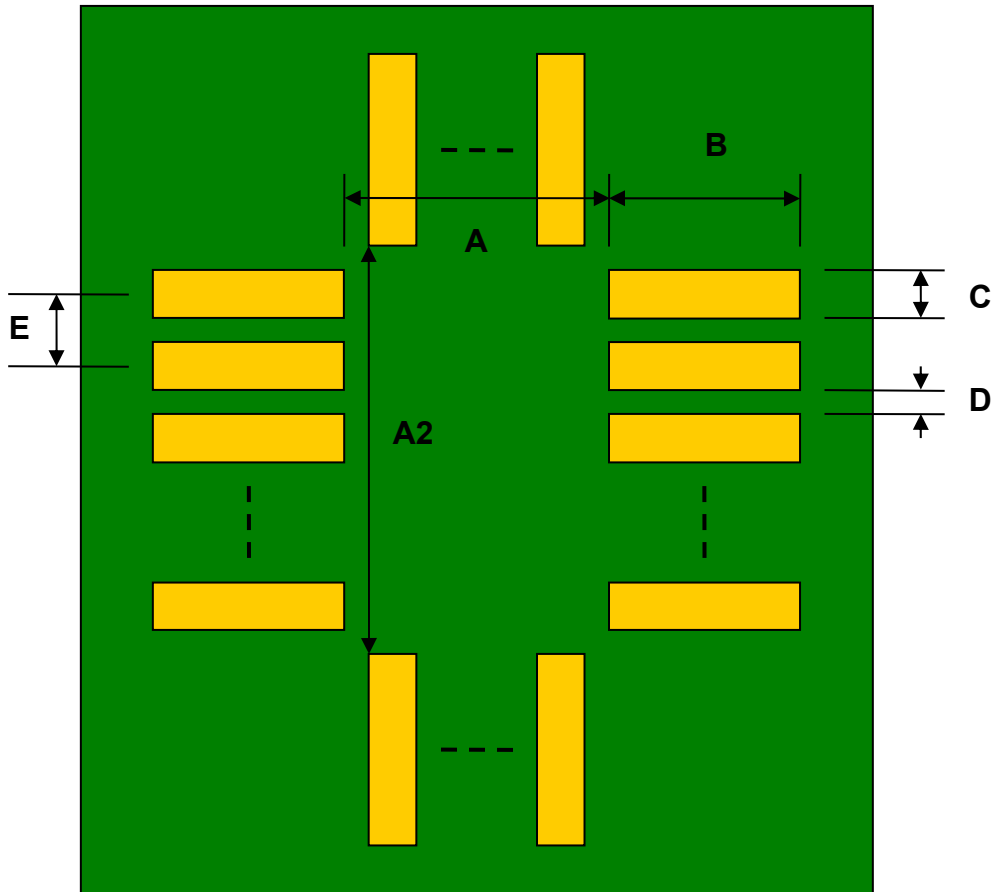


## PLCC-32/JLCC-32/LCC-32 to DIP-32 SMT Adapter (50 mils / 1.27 mm pitch, 14 x 11.5 mm body)



REF.	DIMENSIONS					
	mm			inches		
	MIN.	TYP.	MAX.	MIN.	TYP.	MAX.
A		9.25				
A2		11.75				
B		2.75				
C		0.80				
D		0.47				
E		1.27				
F					0.600	
G					0.100	
H		0.46				
X					0.700	
Y					1.600	

Top View (SMT Footprint)



(Representative drawing only - not to scale)

### Bottom View (DIP Pins)



(Representative drawing only - not to scale)

### Side View (DIP Pins)



(Representative drawing only - not to scale)