

|             |    |    |   |     |
|-------------|----|----|---|-----|
| PLUG:       | PA | 10 | S | JTB |
| RECEPTACLE: | PA | 10 | P | J   |
|             | XX | XX | X | XXX |

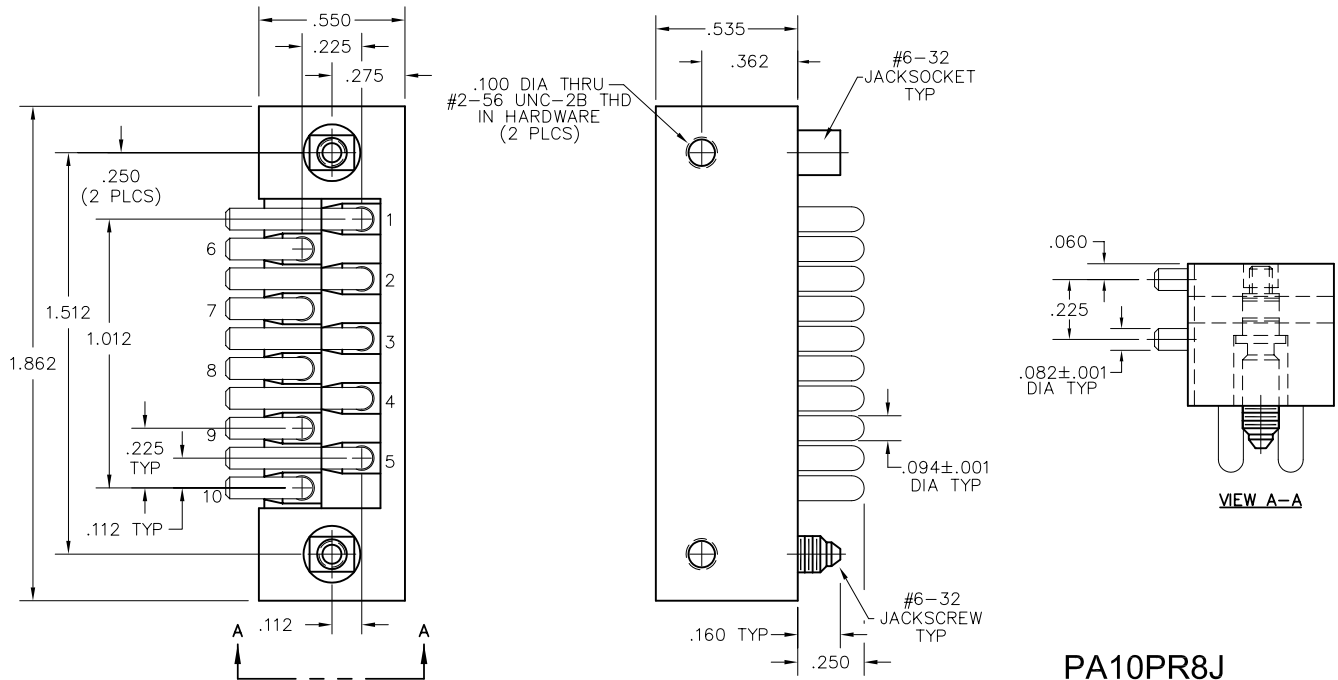
| PLUG   |   | RECEPTACLE   |                              |
|--|---|--|------------------------------|
| <b>SERIES</b>  |   |  |                              |
| PA   | Power connectors                                | PA   | Power connectors             |
| <b>SIZE</b>  |   |  |                              |
| 10   | 10 #12 contacts                                 | 10   | 10 #12 contacts              |
| <b>CONTACTS</b>  |   |  |                              |
| <b>TYPE CONTACTS/TERMINATIONS:</b><br>P Pin, straight, solder cup<br>PD11 Pin, straight, dip solder, .172" x .062" dia<br>PR7 Pin, right angle, dip solder, .109" x .082" dia<br>PR8 Pin, right angle, dip solder, .125" x .082" dia |   | <b>TYPE CONTACTS/TERMINATIONS:</b><br>S Socket, straight, solder cup<br>SD11 Socket, straight, dip solder, .172" x .062" |                              |
| <b>HARDWARE</b>  |   |  |                              |
| SY   | Guide set                                       | SY   | Guide set                    |
| J  | Fixed jackset                                   | J  | Fixed jackset                |
| JT   | Turning jackset, 1.054" (straight plug only)    | JT   | Turning jackset, 1.054"      |
| JTB  | Hex turning jackset, .314" (straight plug only) | JTB  | Hex turning jackset, .314"   |
| JTL  | Long turning jackset, 1.175"                    | JTL  | Long turning jackset, 1.175" |

**OPTIONS**

- Option Codes: Add to the end of the part number. Example: PA10PD11SY-P39. Call factory for additional codes.
  - D01 Pretinned contact terminations (except solder cups, wire wraps<sup>®</sup> and flex contacts) with 63/37 or 60/40 solder. ☒
  - P39 Pretinned contact terminations (except solder cups, wire wraps<sup>®</sup> and flex contacts) with SAC305 solder (lead free).
- ☒ = Option not RoHS compliant

**NOTES:**

Molded bodies: Polyphenylene sulfide  
 Contact rating: #12 contacts = 23 amps  
 Contact material: Socket - Beryllium copper, gold plated  
 Pin - Brass gold plated  
 Contact plating: Nominal Au plating thickness is 20 microinches on mating surfaces  
 Test voltage: 2000 VRMS @ sea level; 460 VRMS @ 70,000 feet  
 Contact resistance: .023 volt maximum drop @ 23 amps (.001 ohm)  
 Engagement force: 24 ounces maximum average per contact



**PA10PR8J**