

PLUG: PA 10 S JTB
 RECEPTACLE: PA 10 P J
 XX XX X XXX

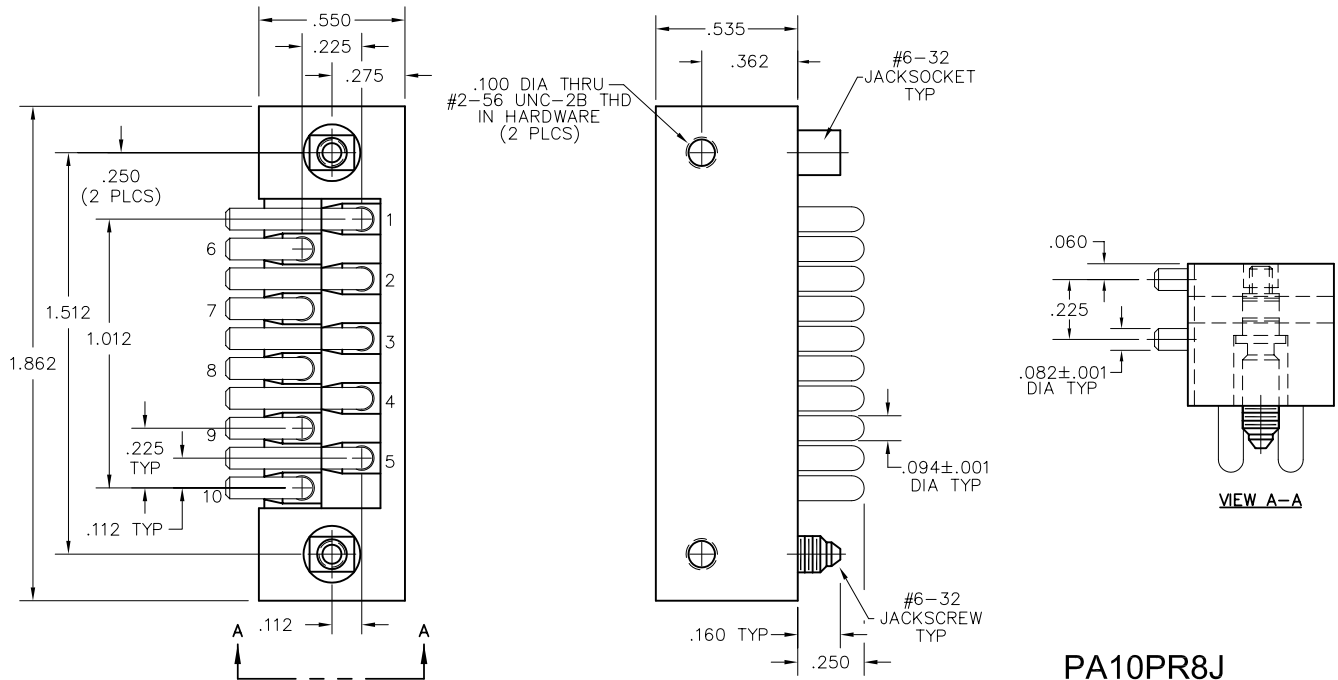
| PLUG | | RECEPTACLE | |
|---|---|---|------------------------------|
| SERIES | | | |
| PA | Power connectors | PA | Power connectors |
| SIZE | | | |
| 10 | 10 #12 contacts | 10 | 10 #12 contacts |
| CONTACTS | | | |
| TYPE CONTACTS/TERMINATIONS: P Pin, straight, solder cup PD11 Pin, straight, dip solder, .172" x .062" dia PR7 Pin, right angle, dip solder, .109" x .082" dia PR8 Pin, right angle, dip solder, .125" x .082" dia | | TYPE CONTACTS/TERMINATIONS: S Socket, straight, solder cup SD11 Socket, straight, dip solder, .172" x .062" | |
| HARDWARE | | | |
| SY | Guide set | SY | Guide set |
| J | Fixed jackset | J | Fixed jackset |
| JT | Turning jackset, 1.054" (straight plug only) | JT | Turning jackset, 1.054" |
| JTB | Hex turning jackset, .314" (straight plug only) | JTB | Hex turning jackset, .314" |
| JTL | Long turning jackset, 1.175" | JTL | Long turning jackset, 1.175" |

OPTIONS

- Option Codes: Add to the end of the part number. Example: PA10PD11SY-P39. Call factory for additional codes.
 - D01 Pretinned contact terminations (except solder cups, wire wraps[®] and flex contacts) with 63/37 or 60/40 solder. ☒
 - P39 Pretinned contact terminations (except solder cups, wire wraps[®] and flex contacts) with SAC305 solder (lead free).
- ☒ = Option not RoHS compliant

NOTES:

Molded bodies: Polyphenylene sulfide
 Contact rating: #12 contacts = 23 amps
 Contact material: Socket - Beryllium copper, gold plated
 Pin - Brass gold plated
 Contact plating: Nominal Au plating thickness is 20 microinches on mating surfaces
 Test voltage: 2000 VRMS @ sea level; 460 VRMS @ 70,000 feet
 Contact resistance: .023 volt maximum drop @ 23 amps (.001 ohm)
 Engagement force: 24 ounces maximum average per contact



PA10PR8J