

32 PIN TSOP SOCKET ADAPTER

Model : PA32TS32D-14

These adapters connect the pins of a 32 pin TSOP device to a 32 pin DIP equivalent. They accept a TSOP device and plug into a DIP socket.



Order No.

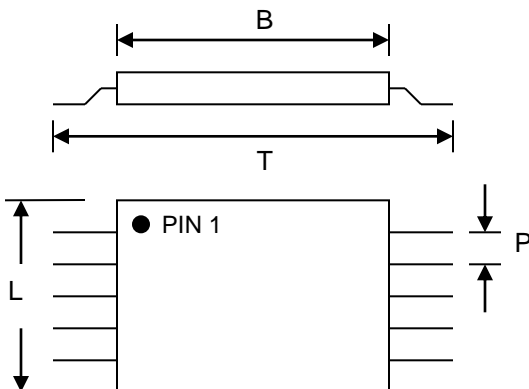
► PA32TS32D-14

Socket manufacture (Wells-CTI), Socket type (Open)

The PA32TS32D-14-WO socket adapter accepts with the device family below :

This adapter can program all 32-pin TSOP devices With Tip size 14 mil on programmers.

The TSOP socket accepts packages with the dimensions listed below :



Body	18.4mm typ
Tip	14.0mm
Length	8.0mm typ
Pitch	0.5mm

The following chart shows the connections from the TSOP socket to the adapter's DIP plug.

TSOP32	DIP32	DIP32	TSOP32
9	1	32	8
10	2	31	7
11	3	30	6
12	4	29	5
13	5	28	4
14	6	27	3
15	7	26	2
16	8	25	1
17	9	24	32
18	10	23	31
19	11	22	30
20	12	21	29
21	13	20	28
22	14	19	27
23	15	18	26
24	16	17	25