

Specification

- Part No. : **PC27.07.0100A**
- Product Name : **TheStripe™** 850 / 900 / 1800 / 1900 MHz GSM
PCB Antenna
W/100mm IPEX 1.13mm Diameter MHF I
Connector
- Feature : 34mm*7mm*0.8mm
850 / 900 / 1800 / 1900MHz GSM
Compatible with Hirose U.FL
RoHS Compliant



1. Introduction

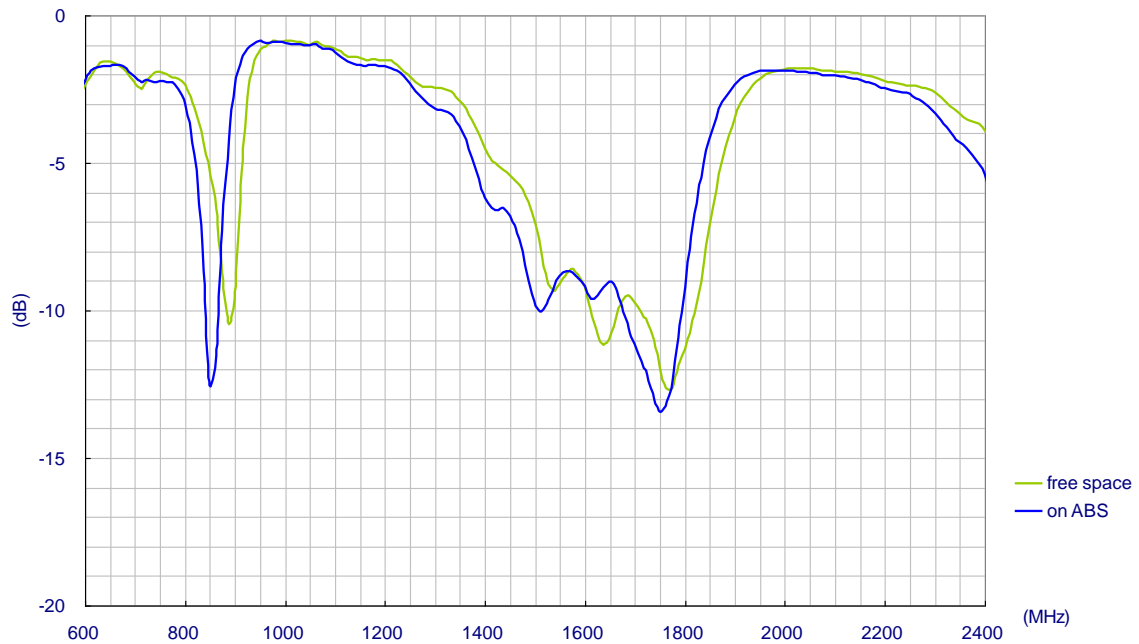
This miniaturized low profile PCB antenna is based on smart TheStripe™ antenna technology. It consists of a PCB antenna and 1.13mm co-axial cable with IPEX MHFI (U.FL) connector.

2. Specification

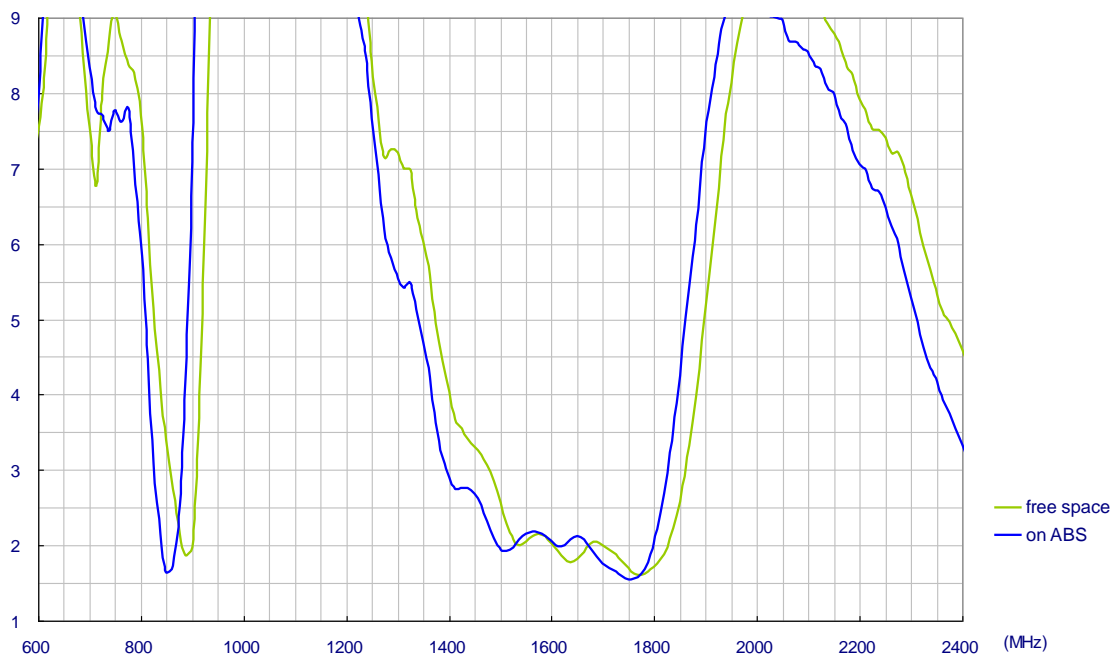
ELECTRICAL				
Frequency (MHz)	824 ~ 896	880~960	1710~1880	1850~1990
Free Space Peak Gain	-4.1dBi	-13dBi	0.6dBi	-0.4dBi
Free Space Efficiency	13%	8%	51%	11%
Impedance	50Ω			
Polarization	Linear			
Radiation Pattern	Omni			
MECHANICAL				
Antenna Dimensions	34 x 7 x 0.8mm			
Cable	1.13 co-axial			
Connector	IPEX MHF I			
ENVIRONMENTAL				
Operation Temperature	-40°C to 85°C			
Humidity	Non-condensing 65°C 95% RH			

3. S11 Property

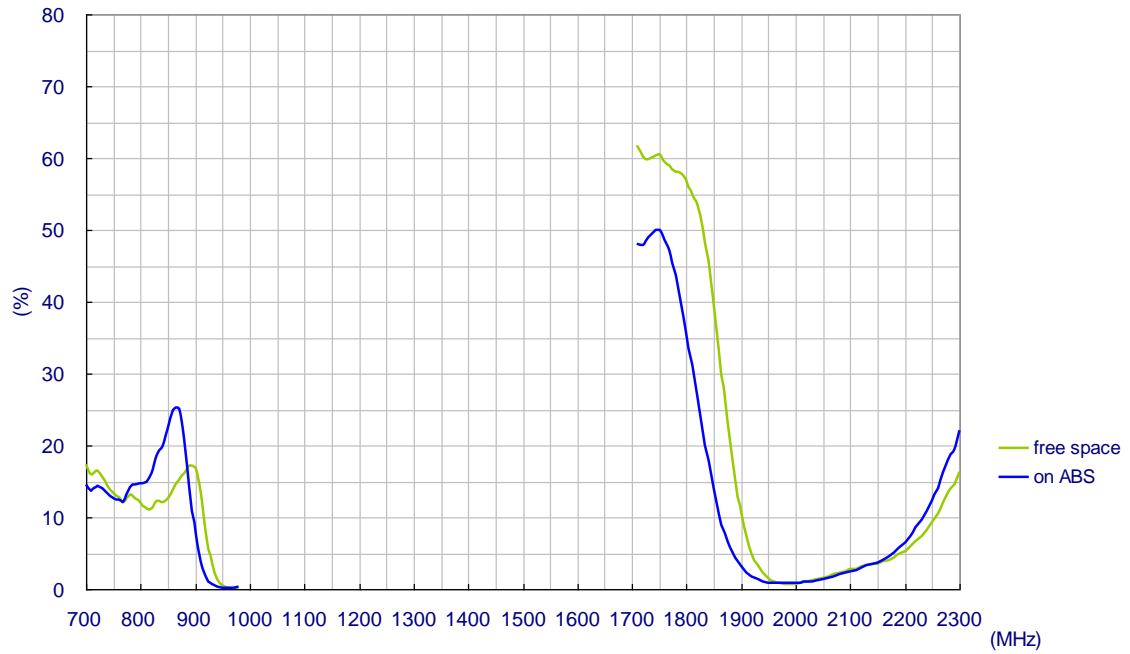
3.1. Return Loss



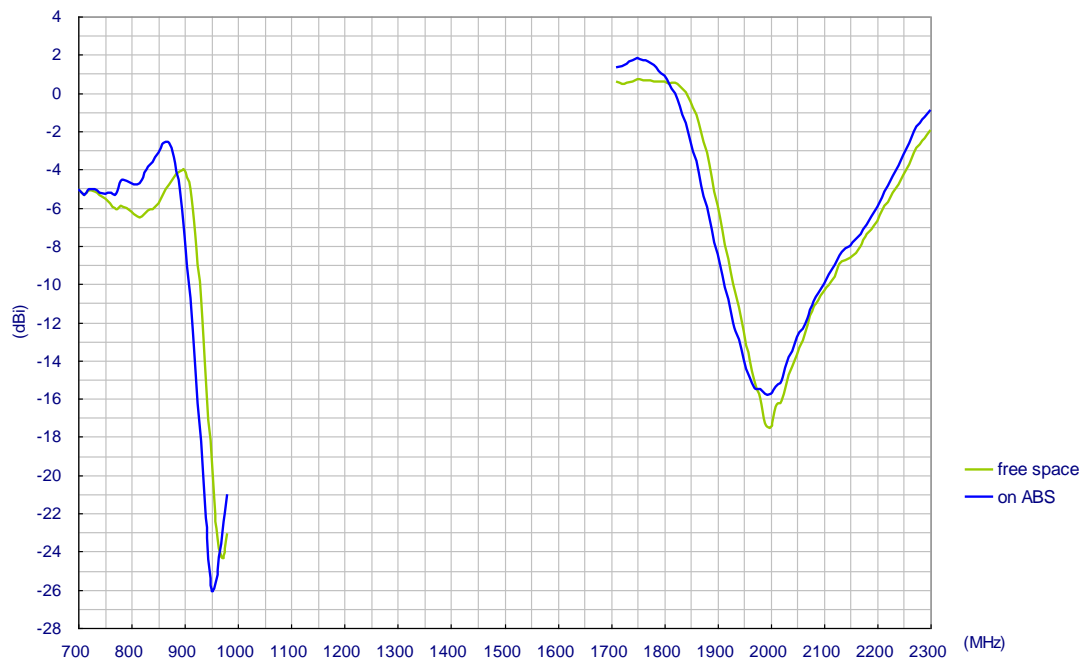
3.2. VSWR



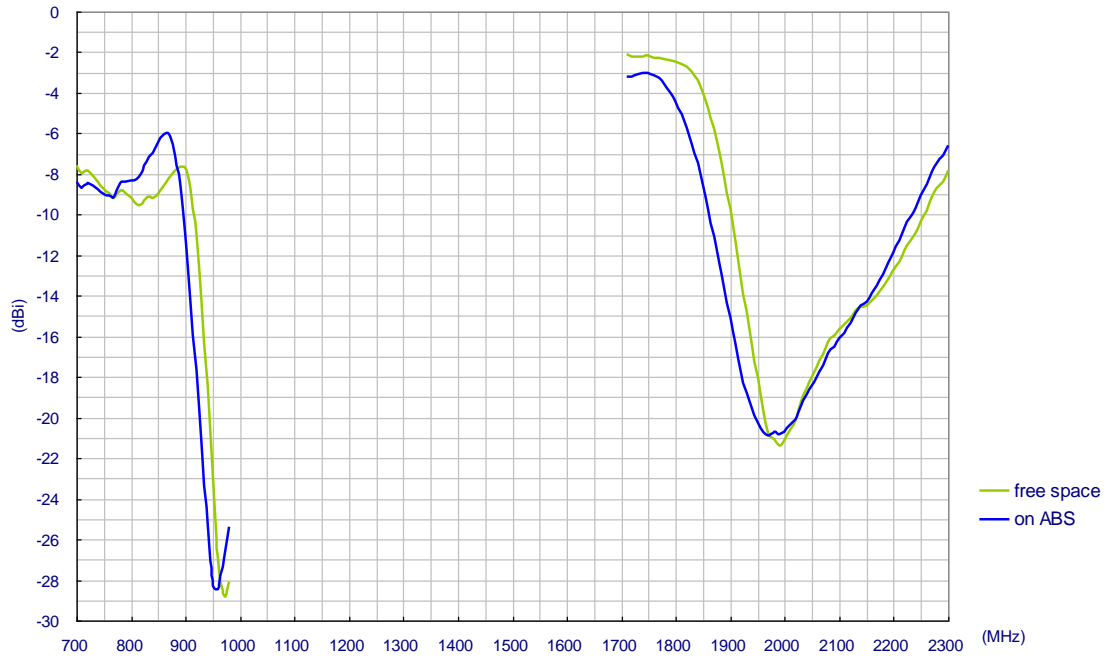
3.3. Efficiency



3.4. Peak Gain



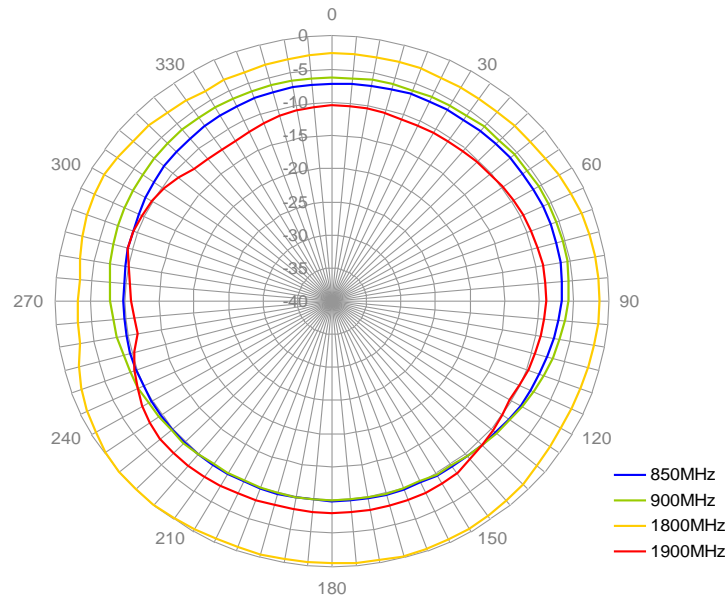
3.5. Average Gain



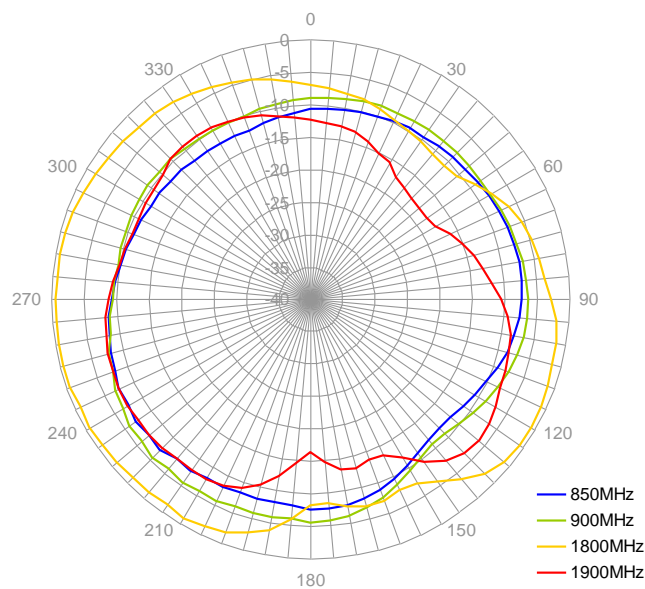
4. Antenna Radiation Pattern

4.1. Radiation Pattern in Free Space

4.1.1. E-plane Radiation

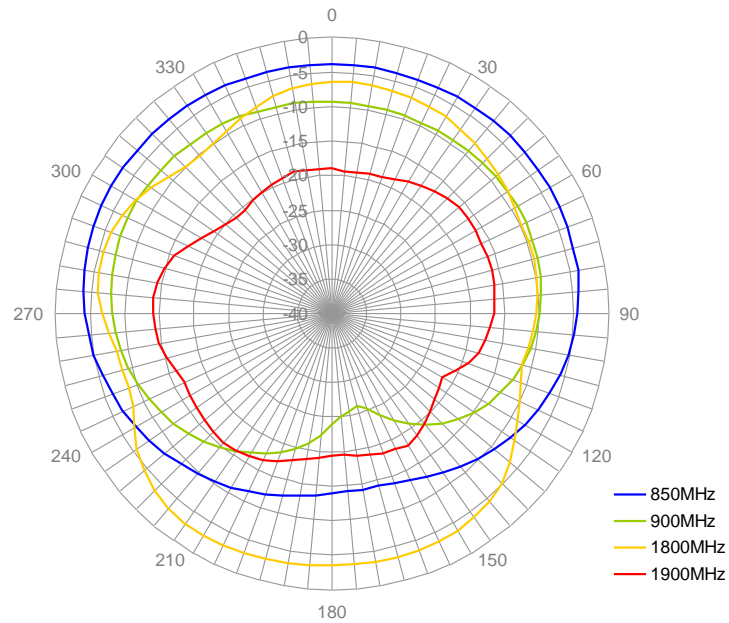


4.1.2. H-plane Radiation

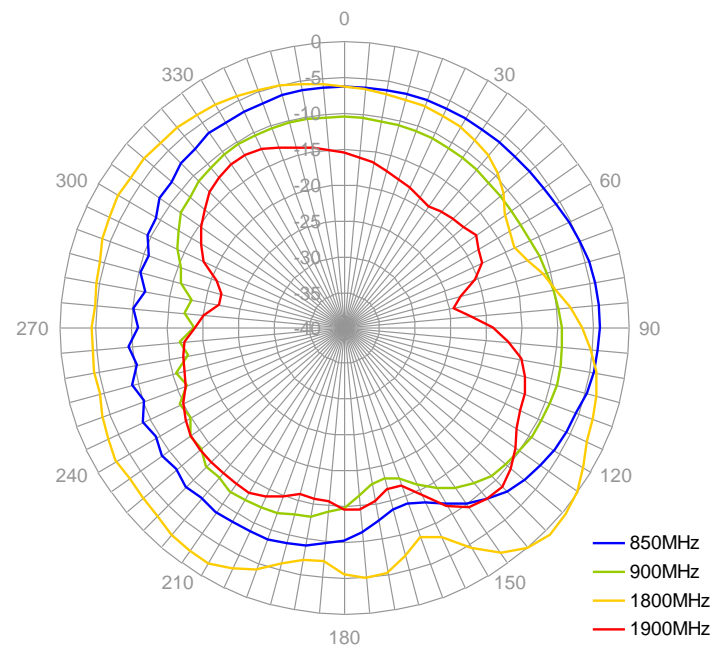


4.2. Radiation Pattern on ABS

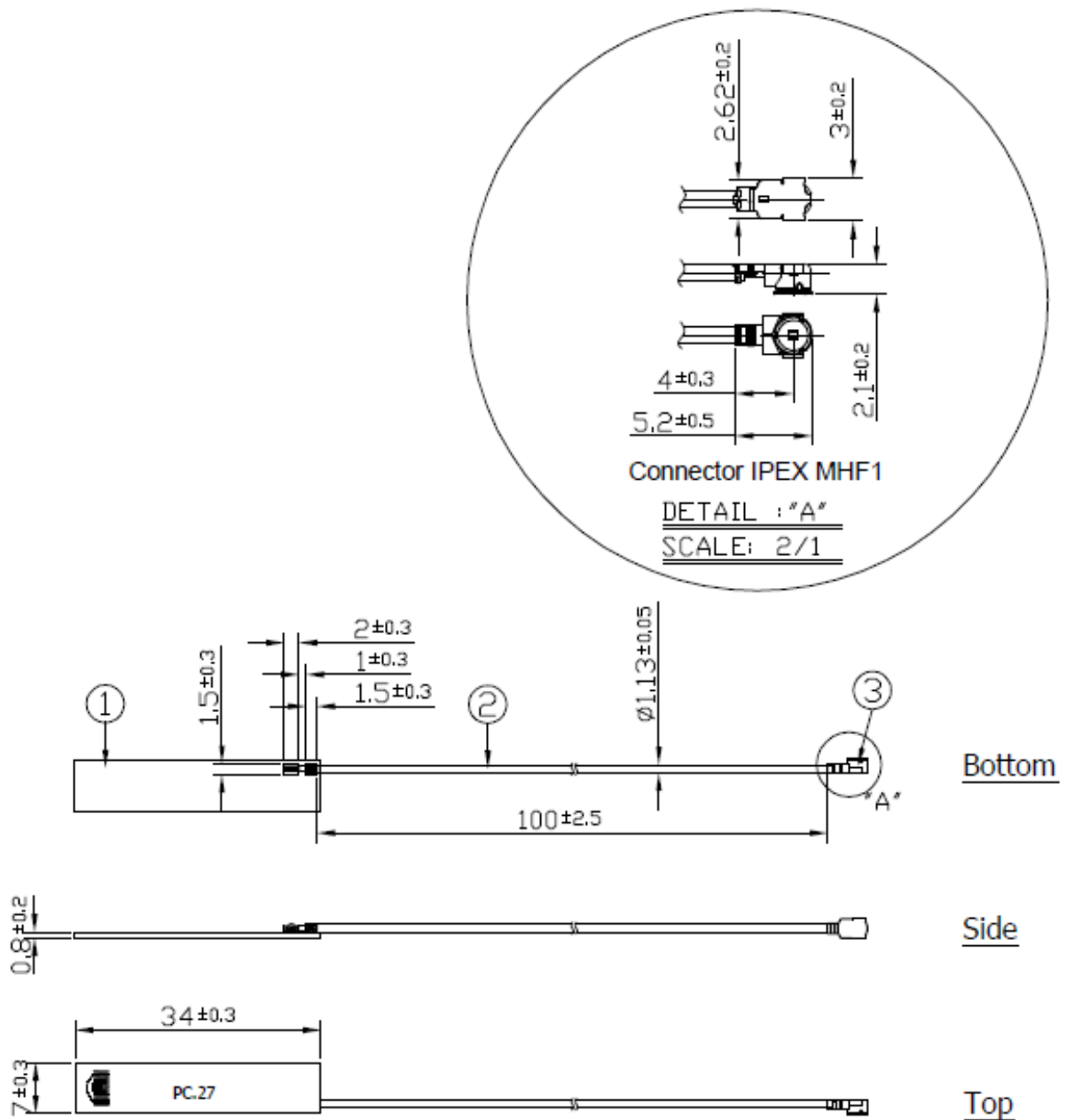
4.2.1. E-plane Radiation



4.2.2. H-plane Radiation



5. Drawing

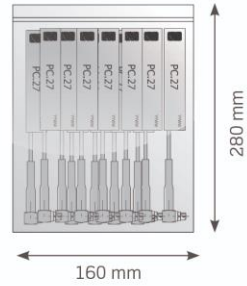


	Name	Material	Finish	QTY
1	PC27 PCB	FR4.08t	Black	1
2	1.13 Coaxial Cable	FEP	Black	1
3	IPEX MHF1	Brass	Gold	1

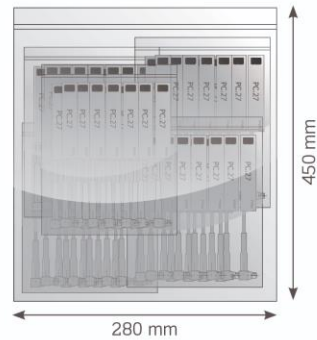
All material must be RoHS compliant.
 Open/Short QC, VSWR required.

6. Packaging

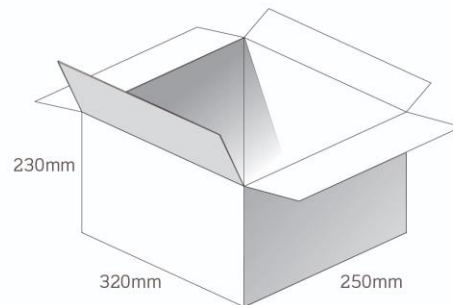
100pc PC27.09.0100A per PE Bag
 Bag Dimensions - 285 x 160mm
 Weight - 240g



500pcs PC27.07.0100A per PE Large Bag
 Bag Dimensions - 450 x 280mm
 Weight - 1.2kg



2000 pcs PC27.07.0100A per carton
 Carton - 320 x 250 x 230mm
 Weight - 4.8Kg



Pallet Dimensions 1200x 1000 x 1350mm
 60 Cartons per Pallet
 12 Cartons per layer
 5 Layers

