

# Photoelectrics

## Retro-reflective for Transparent Objects

### Type PD30CNG02....RT

CARLO GAVAZZI



- Miniature sensor range
- Range: 2 m, with reflector
- Sensitivity adjustment by Teach-In programming
- Modulated, red light 617 nm
- Supply voltage: 10 to 30 VDC
- Output: 100 mA, NPN or PNP preset
- Make and break switching function programmable
- LED indication for output, stability and power ON
- Protection: reverse polarity, short circuit and transients
- Cable and plug versions
- Excellent EMC performance
- Remote teach features



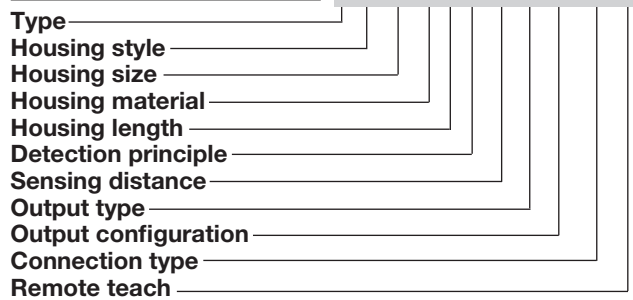
## Product Description

The PD30CNG02 sensor family comes in a compact 10 x 30 x 20 mm reinforced PMMA/ABS housing. The sensors are useful in applications where detection of transparent objects are needed. Compact housing and high power LED for excellent performance-size ratio.

The Teach-In function for adjustment of the sensitivity makes the sensors highly flexible. The output type is preset (NPN or PNP), and the output switching function is programmable (NO or NC). A remote teach feature allow the sensor to be set up from e.g. a PLC.

## Ordering Key

PD30CNG02PPM5RT



## Type Selection

Housing W x H x D	Range S <sub>n</sub>	Connection	Ordering no. NPN Make or break switching	Ordering no. PNP Make or break switching
10 x 30 x 20 mm	2 m	Cable	PD 30 CNG 02 NPRT	PD 30 CNG 02 PPRT
10 x 30 x 20 mm	2 m	Plug	PD 30 CNG 02 NPM5RT	PD 30 CNG 02 PPM5RT

**Note:** Reflectors to be ordered separately

## Specifications EN 60947-5-2

<b>Rated operating distance (S<sub>n</sub>)</b>	Up to 2 m, with reflector Ø 80 mm (ER4)	<b>Light source</b>	inGaAlP, LED, 617 nm
<b>Detection reliability</b>	20% attenuation	<b>Light type, not polarized</b>	Red, modulated
<b>Blind zone</b>	10 mm	<b>Sensing angle</b>	± 2°
<b>Sensitivity</b>	Adjustable by Teach-In	<b>Ambient light</b>	10,000 lux
<b>Temperature drift</b>	≤ 0.1%/°C Teach settings are valid for teach temperature ± 20°C	<b>Light spot</b>	110 mm @ 1.5 m
<b>Hysteresis (H) (differential travel)</b>	≤ 10%	<b>Operating frequency</b>	1000 Hz
<b>Rated operational volt. (U<sub>B</sub>)</b>	10 to 30 VDC (ripple included)	<b>Response time</b>	
<b>Ripple (U<sub>rpp</sub>)</b>	≤ 10%	OFF-ON (t <sub>ON</sub> )	≤ 0.5 ms
<b>Output current</b>		ON-OFF (t <sub>OFF</sub> )	≤ 0.5 ms
Continuous (I <sub>a</sub> )	≤ 100 mA	<b>Power ON delay (t<sub>v</sub>)</b>	≤ 300 ms
Short-time (I)	≤ 100 mA (max. load capacity 100 nF)	<b>Output function</b>	
<b>No load supply current (I<sub>o</sub>)</b>	≤ 30 mA @ 24 VDC	NPN and PNP	Preset
<b>Minimum operational current (I<sub>m</sub>)</b>	0.5 mA	NO/NC switching function	Set up by button
<b>OFF-state current (I<sub>r</sub>)</b>	≤ 100 µA	<b>Remote teach function</b>	
<b>Voltage drop (U<sub>d</sub>)</b>	≤ 2.4 VDC @ 100 mA	Teach on (push button active)	0 to 2.5 VDC (NPN) 5 to 30 VDC (PNP)
<b>Protection</b>	Short-circuit, reverse polarity and transients	Tamper proof	When activated more than 20 sec. the sensor goes into a Tamper proof mode.
		<b>Indication</b>	
		Output ON	LED, yellow
		Signal stability ON and power ON	LED, green

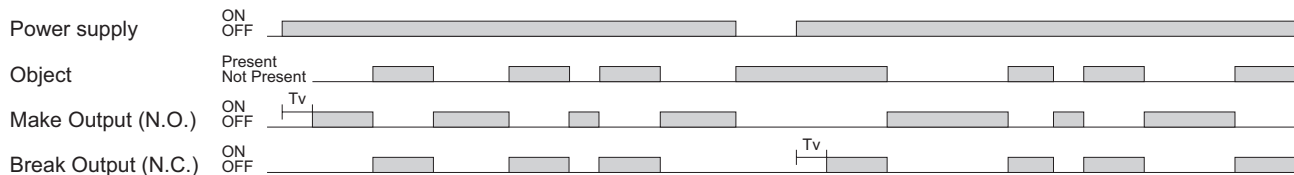


## Specifications (cont.) EN 60947-5-2

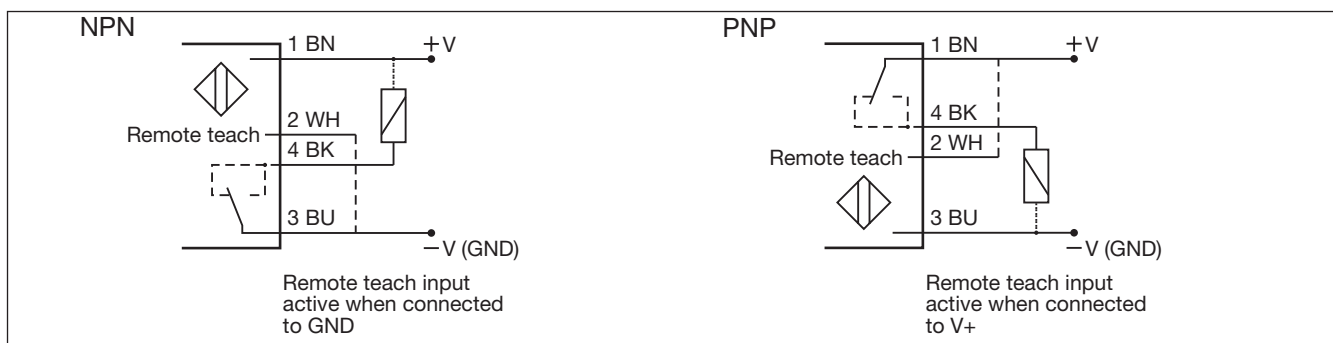
<b>Environment</b>		<b>Rated insulation voltage</b>	500 VAC (rms)
Installation category	III (IEC 60664/60664A; 60947-1)	<b>Housing material</b>	
Pollution degree	3 (IEC 60664/60664A; 60947-1)	Body	ABS
Degree of protection	IP 67 (IEC 60529; 60947-1)	Front material	PMMA, red
<b>Ambient temperature</b>		<b>Connection</b>	
Operating	-25° to +55°C (-13° to +131°F)	Cable	PVC, black, 2 m 4 x 0.14 mm <sup>2</sup> , Ø = 3.3 mm
Storage	-40° to +70°C (-40° to +158°F)	Plug	M8, 4-pin (CON, 54-series)
<b>Vibration</b>	1	<b>Weight</b>	With cable: 40 g With plug: 10 g
	0 to 55 Hz, 0.5 mm/7.5 g (IEC 60068-2-6)	<b>CE-marking</b>	Yes
<b>Shock</b>		<b>Approvals</b>	cULus (UL508)
	30 g / 11ms, 3 pos, 3 neg per axis (IEC 60068-2-6, 60068-2-32)		

## Operation Diagram

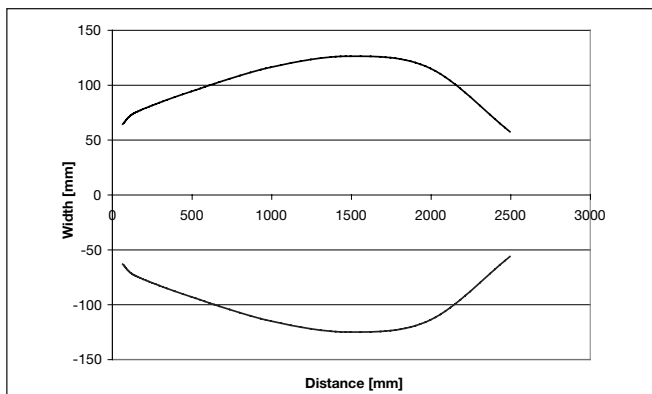
tv = Power ON delay



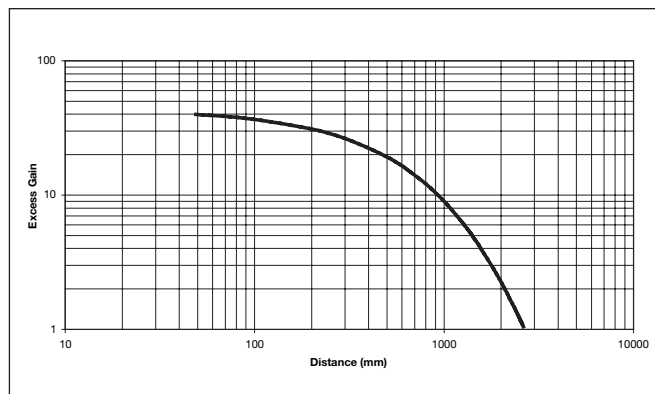
## Wiring Diagrams



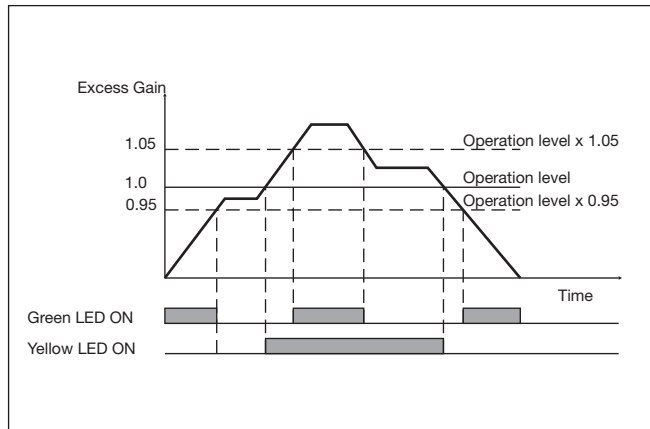
## Detection Diagram



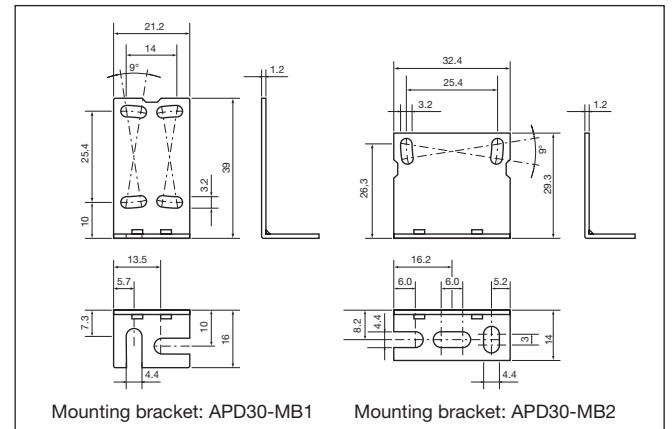
## Excess Gain



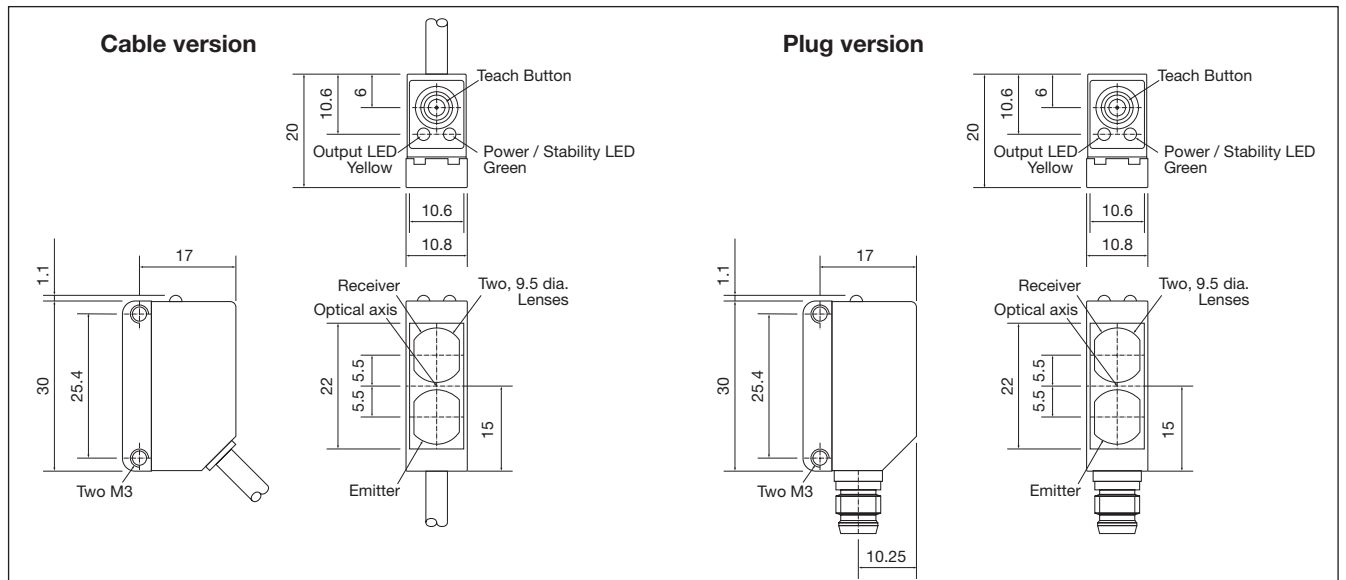
## Signal Stability Indication



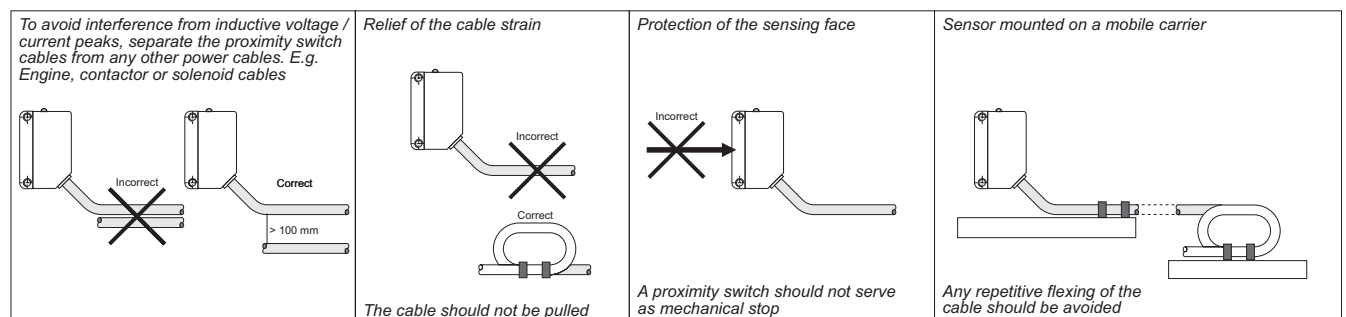
## Accessories



## Dimensions



## Installation Hints



## Delivery Contents

- Photoelectric switch: PD 30 CNG 02...RT
- Installation instruction
- Mounting bracket APD30-MB1
- **Packaging:** Cardboard box

## Accessories

- Reflector is to be purchased separately
- Mounting bracket APD30-MB2 to be purchased separately