

# Photoelectrics Retro-reflective Type PD30CNR06....MU

CARLO GAVAZZI



- Miniature sensor range
- Range: 6 m, with reflector
- Sensitivity adjustment by Teach-In programming
- Modulated, infrared light 880 nm
- Supply voltage: 10 to 30 VDC
- Output: 100 mA, NPN or PNP preset
- Make and break switching function programmable
- LED indication for output, stability and power ON
- Protection: reverse polarity, short circuit and transients
- Cable and plug versions
- Excellent EMC performance
- Mute function (Sensor blanking)



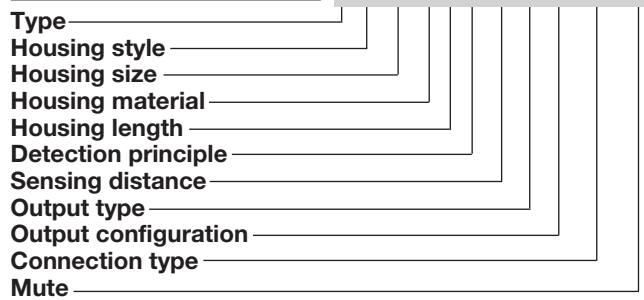
## Product Description

The PD30CNR06 sensor family comes in a compact 10 x 30 x 20 mm reinforced PMMA/ABS housing. The sensors are useful in applications where high-accuracy detection as well as small size is required. Compact housing and high power LED for excellent performance-size ratio.

The Teach-In function for adjustment of the sensitivity makes the sensors highly flexible. The output type is preset (NPN or PNP), and the output switching function is programmable (NO or NC). The mute function can be used for testing the sensor for: Malfunctioning, disconnection, optical axis adjustment, dusty and dirty lenses.

## Ordering Key

PD30CNR06PPM5MU



## Type Selection

Housing W x H x D	Range S <sub>n</sub>	Connection	Ordering no. NPN Make or break switching	Ordering no. PNP Make or break switching
10 x 30 x 20 mm	6 m	Cable	PD 30 CNR 06 NPMU	PD 30 CNR 06 PPMU
10 x 30 x 20 mm	6 m	Plug	PD 30 CNR 06 NPM5MU	PD 30 CNR 06 PPM5MU

**Note:** Reflectors to be ordered separately

## Specifications EN 60947-5-2

<b>Rated operating distance (S<sub>n</sub>)</b>	Up to 6 m, with reflector Ø 80 mm (ER4) 4 m on ER4060 reflector	<b>Light type</b>	Infrared, modulated
<b>Blind zone</b>	100 mm	<b>Sensing angle</b>	± 2°
<b>Sensitivity</b>	Adjustable by Teach-In	<b>Ambient light</b>	10,000 lux
<b>Temperature drift</b>	≤ 0.1%/°C	<b>Light spot</b>	110 mm @ 1.5 m
<b>Hysteresis (H) (differential travel)</b>	≤ 10%	<b>Operating frequency</b>	1000 Hz
<b>Rated operational volt. (U<sub>B</sub>)</b>	10 to 30 VDC (ripple included)	<b>Response time</b>	
<b>Ripple (U<sub>rpp</sub>)</b>	≤ 10%	OFF-ON (t <sub>ON</sub> )	≤ 0.5 ms
<b>Output current</b>		ON-OFF (t <sub>OFF</sub> )	≤ 0.5 ms
Continuous (I <sub>a</sub> )	≤ 100 mA	<b>Power ON delay (t<sub>v</sub>)</b>	≤ 300 ms
Short-time (I)	≤ 100 mA (max. load capacity 100 nF)	<b>Output function</b>	
<b>No load supply current (I<sub>o</sub>)</b>	≤ 30 mA @ 24 VDC	NPN and PNP	Preset
<b>Minimum operational current (I<sub>m</sub>)</b>	0.5 mA	NO/NC switching function	Set up by button
<b>OFF-state current (I<sub>r</sub>)</b>	≤ 100 µA	<b>Mute function</b>	
<b>Voltage drop (U<sub>d</sub>)</b>	≤ 2.4 VDC @ 100 mA	Emitter off	0 to 3 sec
<b>Protection</b>	Short-circuit, reverse polarity and transients	Emitter ½ power	> 3 sec
<b>Light source</b>	GaAIAs, LED, 880 nm	Operating mode	0 to 2.5 VDC (NPN) 5 to 30 VDC (PNP) 0 to 2.5 VDC (NPN) 5 to 30 VDC (PNP) Not connected
		<b>Indication</b>	
		Output ON	LED, yellow
		Signal stability ON and power ON	LED, green
		<b>Environment</b>	
		Installation category	III (IEC 60664/60664A; 60947-1)

Specifications are subject to change without notice (12.08.2016)

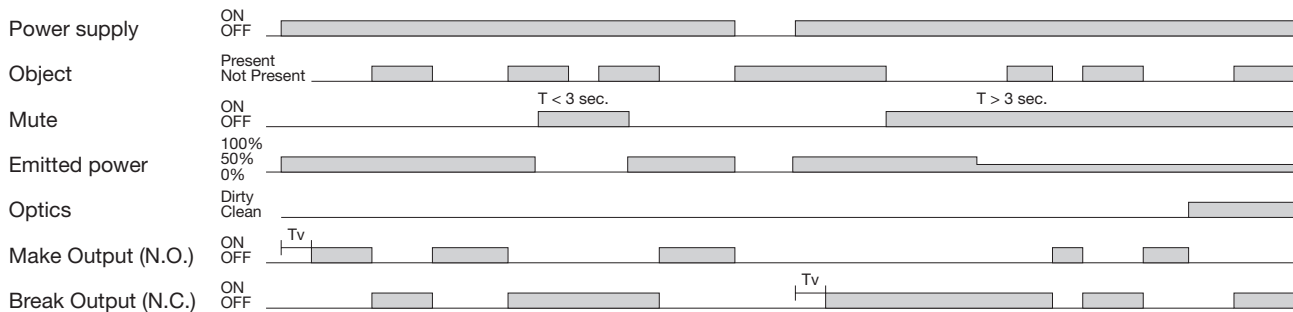


## Specifications (cont.) EN 60947-5-2

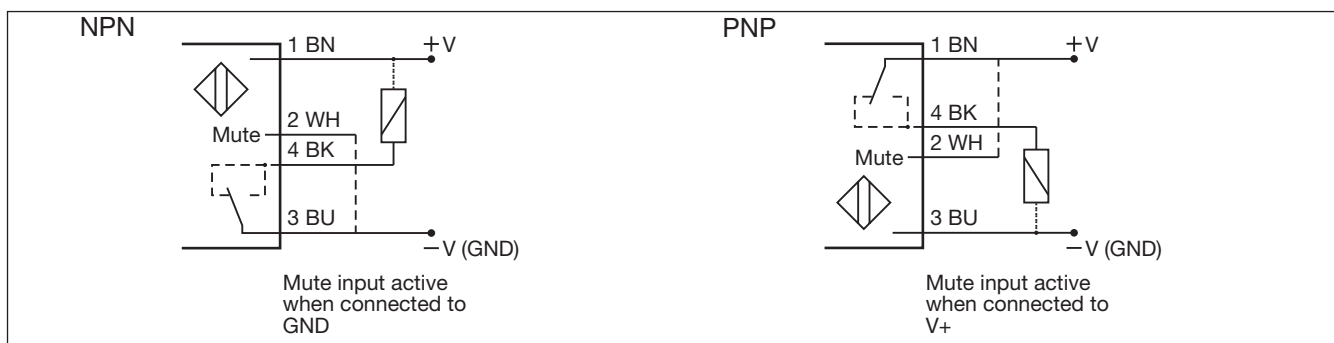
Pollution degree	3 (IEC 60664/60664A; 60947-1)	<b>Housing material</b>	ABS
Degree of protection	IP 67 (IEC 60529; 60947-1)	Body	PMMA, red
<b>Ambient temperature</b>		Front material	
Operating	-25° to +55°C (-13° to +131°F)	<b>Connection</b>	
Storage	-40° to +70°C (-40° to +158°F)	Cable	PVC, black, 2 m 4 x 0.14 mm <sup>2</sup> , Ø = 3.3 mm
<b>Vibration</b>	10 to 55 Hz, 0.5 mm/7.5 g (IEC 60068-2-6)	Plug	M8, 4-pin (CON, 54-series)
<b>Shock</b>	30 g / 11ms, 3 pos, 3 neg per axis (IEC 60068-2-6, 60068-2-32)	<b>Weight</b>	With cable: 40 g With plug: 10 g
<b>Rated insulation voltage</b>	500 VAC (rms)	<b>CE-marking</b>	Yes
		<b>Approvals</b>	cULus (UL508)

## Operation Diagram

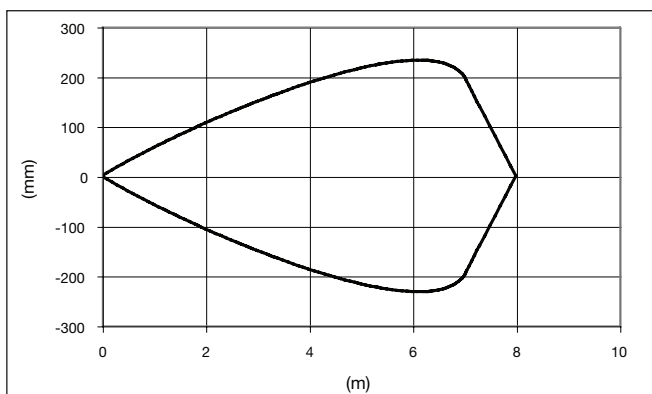
tv = Power ON delay



## Wiring Diagrams



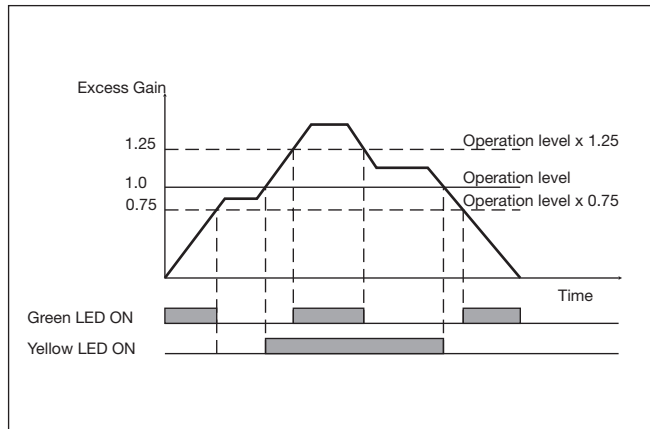
## Detection Diagram



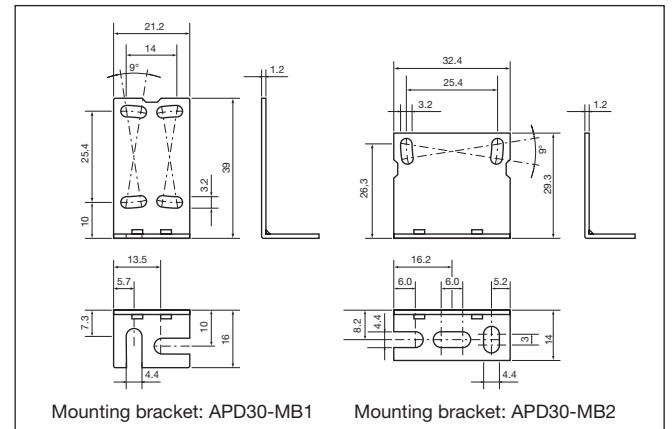
## Excess Gain



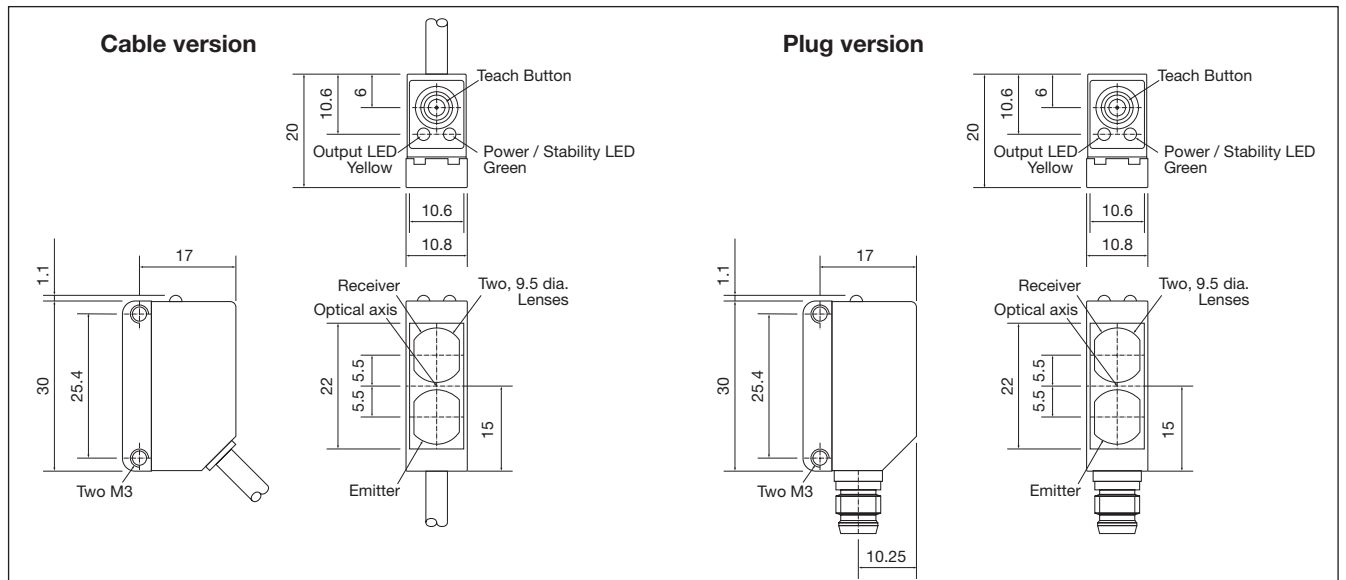
## Signal Stability Indication



## Accessories



## Dimensions



## Installation Hints

<p>To avoid interference from inductive voltage / current peaks, separate the proximity switch cables from any other power cables. E.g. Engine, contactor or solenoid cables</p> <p>Incorrect Correct &gt; 100 mm</p>	<p>Relief of the cable strain</p> <p>Incorrect Correct</p> <p>The cable should not be pulled</p>	<p>Protection of the sensing face</p> <p>Incorrect</p> <p>A proximity switch should not serve as mechanical stop</p>	<p>Sensor mounted on a mobile carrier</p> <p>Any repetitive flexing of the cable should be avoided</p>
---	--	--	--

## Delivery Contents

- Photoelectric switch: PD 30 CNR 06 ...
- Installation instruction
- Mounting bracket APD30-MB1
- **Packaging:** Cardboard box

## Accessories

- Reflector is to be purchased separately
- Mounting bracket APD30-MB2 to be purchased separately