

Photoelectrics Retro-reflective Type PD30CNR06....MU

CARLO GAVAZZI



- Miniature sensor range
- Range: 6 m, with reflector
- Sensitivity adjustment by Teach-In programming
- Modulated, infrared light 880 nm
- Supply voltage: 10 to 30 VDC
- Output: 100 mA, NPN or PNP preset
- Make and break switching function programmable
- LED indication for output, stability and power ON
- Protection: reverse polarity, short circuit and transients
- Cable and plug versions
- Excellent EMC performance
- Mute function (Sensor blanking)



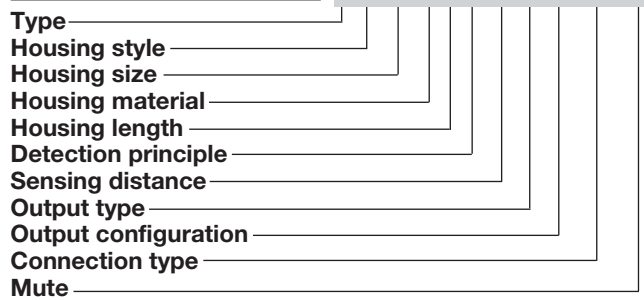
Product Description

The PD30CNR06 sensor family comes in a compact 10 x 30 x 20 mm reinforced PMMA/ABS housing. The sensors are useful in applications where high-accuracy detection as well as small size is required. Compact housing and high power LED for excellent performance-size ratio.

The Teach-In function for adjustment of the sensitivity makes the sensors highly flexible. The output type is preset (NPN or PNP), and the output switching function is programmable (NO or NC). The mute function can be used for testing the sensor for: Malfunctioning, disconnection, optical axis adjustment, dusty and dirty lenses.

Ordering Key

PD30CNR06PPM5MU



Type Selection

| Housing W x H x D | Range S _n | Connection | Ordering no. NPN Make or break switching | Ordering no. PNP Make or break switching |
|----------------------|-------------------------|------------|--|--|
| 10 x 30 x 20 mm | 6 m | Cable | PD 30 CNR 06 NPMU | PD 30 CNR 06 PPMU |
| 10 x 30 x 20 mm | 6 m | Plug | PD 30 CNR 06 NPM5MU | PD 30 CNR 06 PPM5MU |

Note: Reflectors to be ordered separately

Specifications EN 60947-5-2

| | | | |
|--|---|---------------------------------------|---|
| Rated operating distance (S_n) | Up to 6 m, with reflector Ø 80 mm (ER4) 4 m on ER4060 reflector | Light type | Infrared, modulated |
| Blind zone | 100 mm | Sensing angle | ± 2° |
| Sensitivity | Adjustable by Teach-In | Ambient light | 10,000 lux |
| Temperature drift | ≤ 0.1%/°C | Light spot | 110 mm @ 1.5 m |
| Hysteresis (H) (differential travel) | ≤ 10% | Operating frequency | 1000 Hz |
| Rated operational volt. (U_B) | 10 to 30 VDC (ripple included) | Response time | |
| Ripple (U_{rpp}) | ≤ 10% | OFF-ON (t _{ON}) | ≤ 0.5 ms |
| Output current | | ON-OFF (t _{OFF}) | ≤ 0.5 ms |
| Continuous (I _a) | ≤ 100 mA | Power ON delay (t_v) | ≤ 300 ms |
| Short-time (I) | ≤ 100 mA (max. load capacity 100 nF) | Output function | |
| No load supply current (I_o) | ≤ 30 mA @ 24 VDC | NPN and PNP | Preset |
| Minimum operational current (I_m) | 0.5 mA | NO/NC switching function | Set up by button |
| OFF-state current (I_r) | ≤ 100 µA | Mute function | |
| Voltage drop (U_d) | ≤ 2.4 VDC @ 100 mA | Emitter off | 0 to 3 sec |
| Protection | Short-circuit, reverse polarity and transients | Emitter ½ power | > 3 sec |
| Light source | GaAIAs, LED, 880 nm | Operating mode | 0 to 2.5 VDC (NPN) 5 to 30 VDC (PNP) 0 to 2.5 VDC (NPN) 5 to 30 VDC (PNP) Not connected |
| | | Indication | |
| | | Output ON | LED, yellow |
| | | Signal stability ON and power ON | LED, green |
| | | Environment | |
| | | Installation category | III (IEC 60664/60664A; 60947-1) |

Specifications are subject to change without notice (12.08.2016)

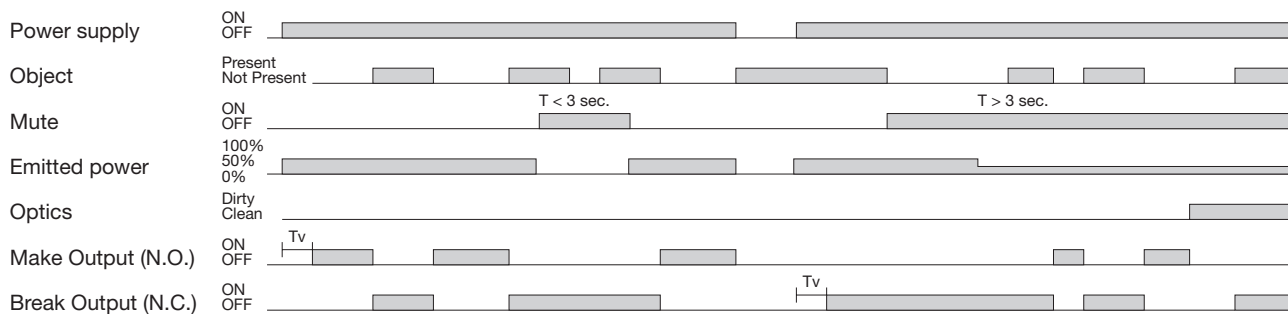


Specifications (cont.) EN 60947-5-2

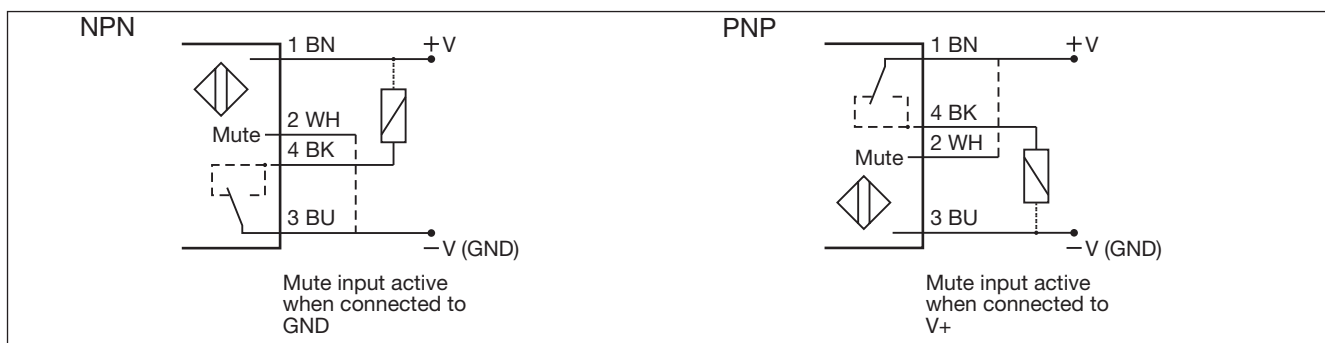
| | | | |
|---------------------------------|--|-------------------------|--|
| Pollution degree | 3 (IEC 60664/60664A; 60947-1) | Housing material | ABS |
| Degree of protection | IP 67 (IEC 60529; 60947-1) | Body | PMMA, red |
| Ambient temperature | | Front material | |
| Operating | -25° to +55°C (-13° to +131°F) | Connection | |
| Storage | -40° to +70°C (-40° to +158°F) | Cable | PVC, black, 2 m 4 x 0.14 mm ² , Ø = 3.3 mm |
| Vibration | 10 to 55 Hz, 0.5 mm/7.5 g (IEC 60068-2-6) | Plug | M8, 4-pin (CON, 54-series) |
| Shock | 30 g / 11ms, 3 pos, 3 neg per axis (IEC 60068-2-6, 60068-2-32) | Weight | With cable: 40 g With plug: 10 g |
| Rated insulation voltage | 500 VAC (rms) | CE-marking | Yes |
| | | Approvals | cULus (UL508) |

Operation Diagram

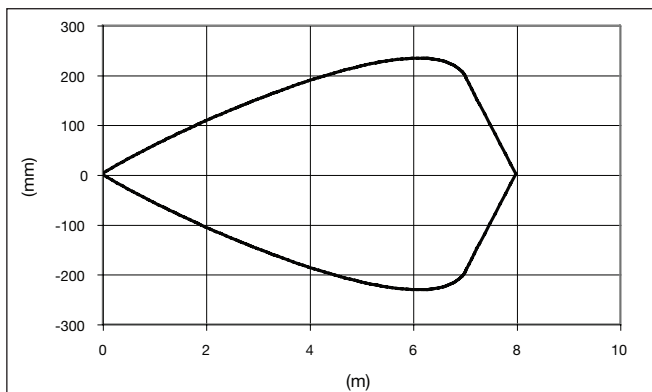
tv = Power ON delay



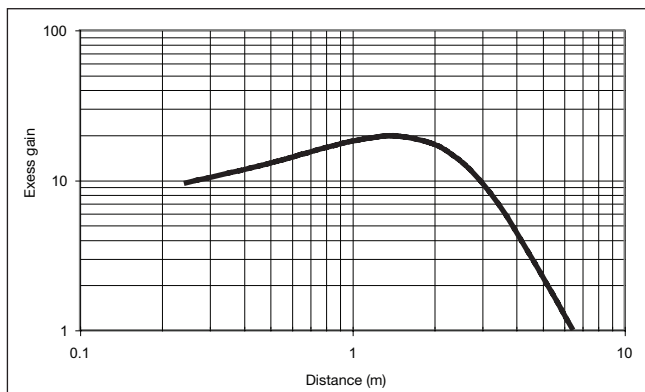
Wiring Diagrams



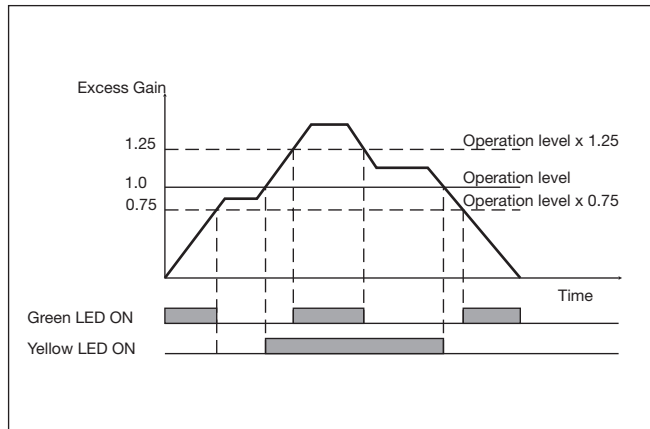
Detection Diagram



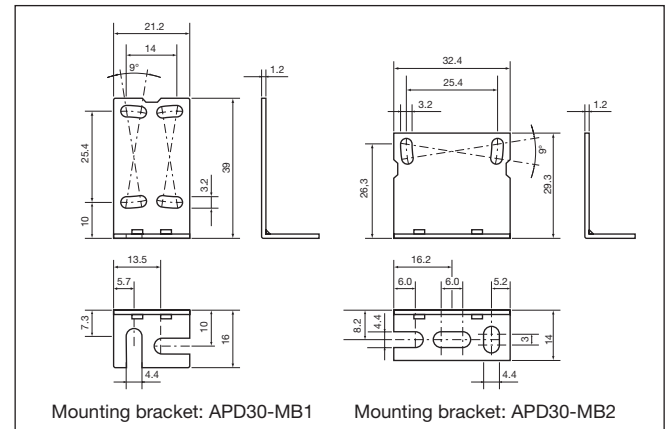
Excess Gain



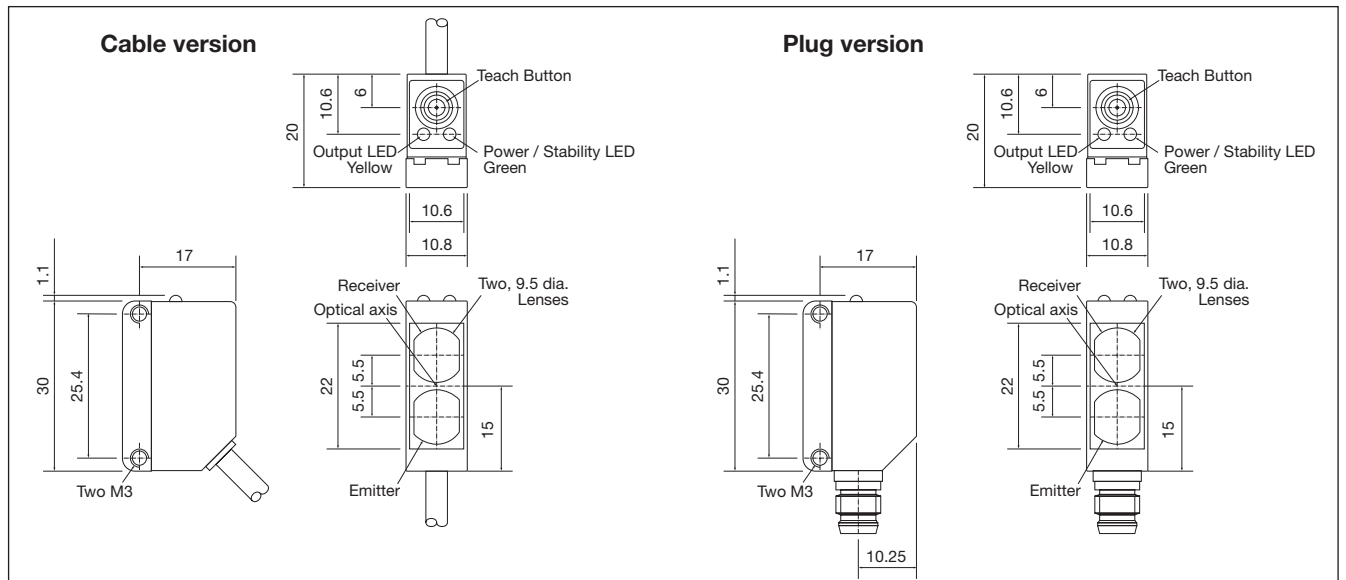
Signal Stability Indication



Accessories



Dimensions



Installation Hints

| | | | |
|---|--|--|--|
| <p>To avoid interference from inductive voltage / current peaks, separate the proximity switch cables from any other power cables. E.g. Engine, contactor or solenoid cables</p> <p>Incorrect Correct > 100 mm</p> | <p>Relief of the cable strain</p> <p>Incorrect Correct</p> <p>The cable should not be pulled</p> | <p>Protection of the sensing face</p> <p>Incorrect</p> <p>A proximity switch should not serve as mechanical stop</p> | <p>Sensor mounted on a mobile carrier</p> <p>Any repetitive flexing of the cable should be avoided</p> |
|---|--|--|--|

Delivery Contents

- Photoelectric switch: PD 30 CNR 06 ...
- Installation instruction
- Mounting bracket APD30-MB1
- **Packaging:** Cardboard box

Accessories

- Reflector is to be purchased separately
- Mounting bracket APD30-MB2 to be purchased separately