



## Features

- Carbon element
- Plain or knurled shaft option
- Metal bushing/metal shaft
- Center detent standard
- Rear solder lugs or PC pins
- 250K and 500K standard resistance values
- Standard M and N taper
- RoHS compliant\*



## PDB182-GTRB - 17 mm Blend-Balance Guitar Potentiometer

### Electrical Characteristics

Taper..... Linear, audio  
 Standard Resistance Range ..... 250K to 500K ohms  
 Standard Resistance Tolerance..... ±20 %  
 Residual Resistance ..... 1 % max.

### Environmental Characteristics

Operating Temperature..... -10 °C to +50 °C  
 Power Rating  
 Dual Section ..... 0.06 watt  
 Maximum Operating Voltage  
 Audio ..... 150 V  
 Sliding Noise ..... 47 mV max.

### Mechanical Characteristics

Mechanical Angle ..... 300 ° ±5 °  
 Rotational Torque ..... 10 to 150 gf-cm  
 Detent Torque ..... 50 to 300 gf-cm  
 Stop Strength ..... 5 kg-cm min.  
 Rotational Life ..... 15,000 cycles  
 Soldering Condition  
 Manual/Wave  
 ..... 260 °C max. for 3 seconds max.  
 Wash..... Not recommended  
 Hardware ..... One flat washer and mounting nut supplied per potentiometer with bushing

### Standard Resistance Table

Resistance (Ohms)	Resistance Code
250,000	254
500,000	504

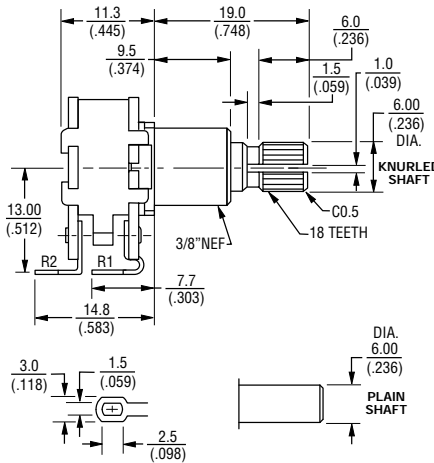
### How to Order

**PDB18 2 - GTR B1 - 254 MN**

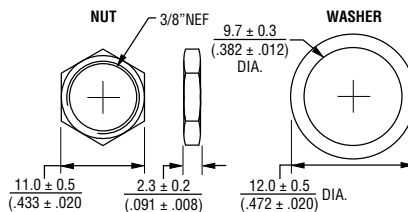
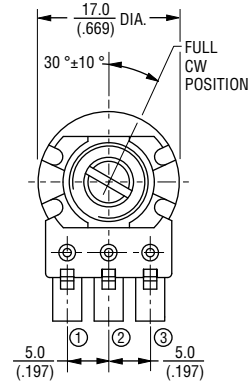
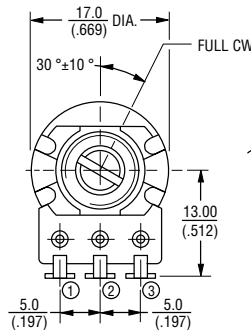
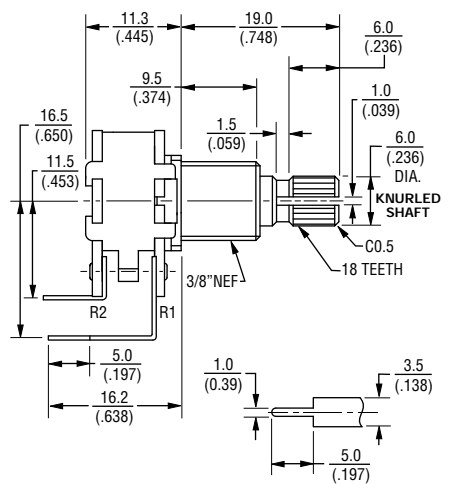
Model \_\_\_\_\_  
 Number of Sections \_\_\_\_\_  
 2 = Dual Section  
 Guitar Pot Designator \_\_\_\_\_  
 Configuration \_\_\_\_\_  
 B1 = Knurled Shaft/Solder Lugs/  
 Center Detent  
 B2 = Plain Shaft/Solder Lugs/  
 Center Detent  
 B3 = Knurled Shaft/PC Pins/  
 Center Detent  
 B4 = Plain Shaft/PC Pins/  
 Center Detent  
 Resistance Code (See Table) \_\_\_\_\_  
 Resistance Taper (See Taper Chart) \_\_\_\_\_

### Product Dimensions

**PDB182-GTRB1,  
PDB182-GTRB2**



**PDB182-GTRB3,  
PDB182-GTRB4**



TOLERANCES:  
 UNDER 10.0 =  $\pm 0.3$  10.0 - 100 =  $\pm 0.5$   
 (.394) = ( $\pm 0.012$ ) (.394 - 3.937) = ( $\pm 0.020$ )



**WARNING Cancer and Reproductive Harm**  
[www.P65Warnings.ca.gov](http://www.P65Warnings.ca.gov)

\*RoHS Directive 2015/863, Mar 31, 2015 and Annex.  
 Specifications are subject to change without notice.

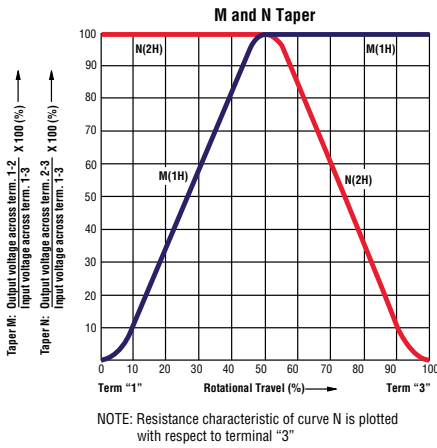
Users should verify actual device performance in their specific applications.

The products described herein and this document are subject to specific disclaimers as set forth on the last page of this document, and at [www.bourns.com/legal/disclaimer.pdf](http://www.bourns.com/legal/disclaimer.pdf).

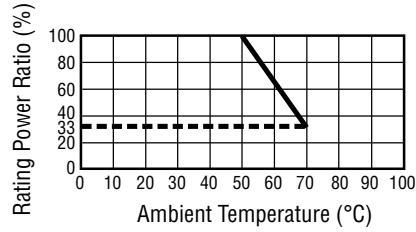
# PDB182-GTRB - 17 mm Blend-Balance Guitar Potentiometer

**BOURNS®**

## Taper Chart

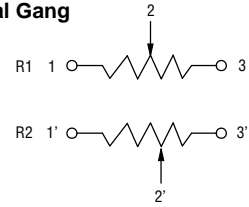


## Derating Curve



## Circuit

### Dual Gang



**BOURNS®**

Asia-Pacific: Tel: +886-2 2562-4117 • Email: asiacus@bourns.com

EMEA: Tel: +36 88 885 877 • Email: eurocus@bourns.com

The Americas: Tel: +1-951 781-5500 • Email: americus@bourns.com

[www.bourns.com](http://www.bourns.com)

REV. 10/19

Specifications are subject to change without notice.

Users should verify actual device performance in their specific applications.

The products described herein and this document are subject to specific legal disclaimers as set forth on the last page of this document, and at [www.bourns.com/docs/legal/disclaimer.pdf](http://www.bourns.com/docs/legal/disclaimer.pdf)