

# 37- 42 GHz 4-way Wilkinson Power Divider

**PDW08324**

## DESCRIPTION

DLI's 37 - 42 GHz 4-way power divider / combiner offers unmatched size and performance in a surface mount configuration. This power divider utilizes DLI's low loss temperature stable materials which offer small size and minimal performance variation over temperature.

## FEATURES

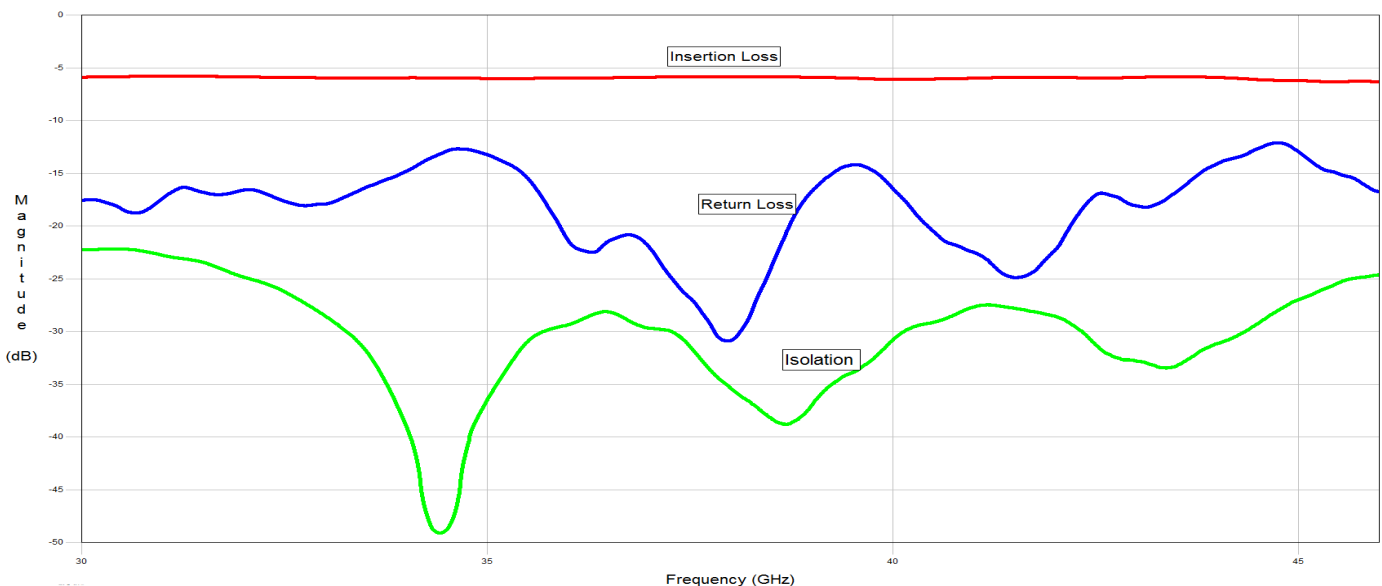
- Small Size
- Frequency Stable over Temperature
- Solder Surface Mount Package
- Excellent Repeatability
- Moisture Sensitivity Level: MSL 1
- Operating Temp: -55°C to +125°C
- Characteristic Impedance: 50Ω

## SPECIFICATIONS\*

Parameter	Frequency Range (GHz)	Min	Typ.	Max	
Nominal Power Splitting (dB)	37 - 42	—	6.0	6.7	
Nominal Phase Shift (Deg)			0.0		
Amplitude Balance (dB)					± .4
Phase Balance (Deg)					± 5.0
Excess Insertion Loss (dB)					0.7
Return Loss (dB)			10	15	—
Isolation (dB)			20	25	—

\*Electrical specifications based on typical mounted performance at room temperature. Insertion loss shall vary ±0.5dB over temperature.

## Typical Measured Performance

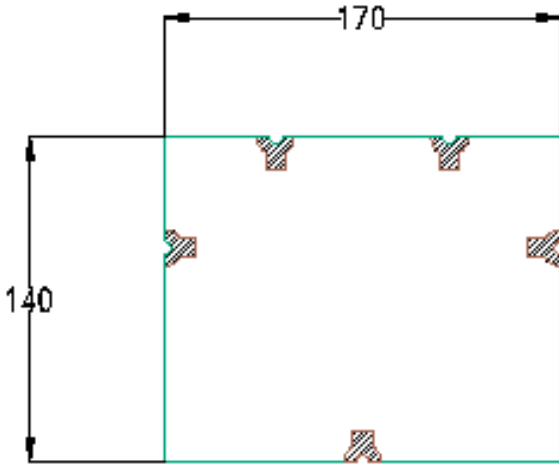


# 37- 42 GHz 4-way Wilkinson Power Divider

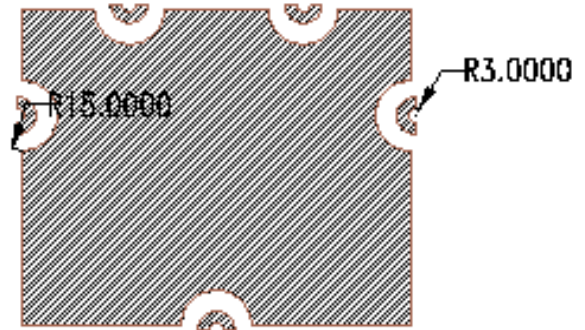
**PDW08324**

## Physical Dimensions

Units = mils

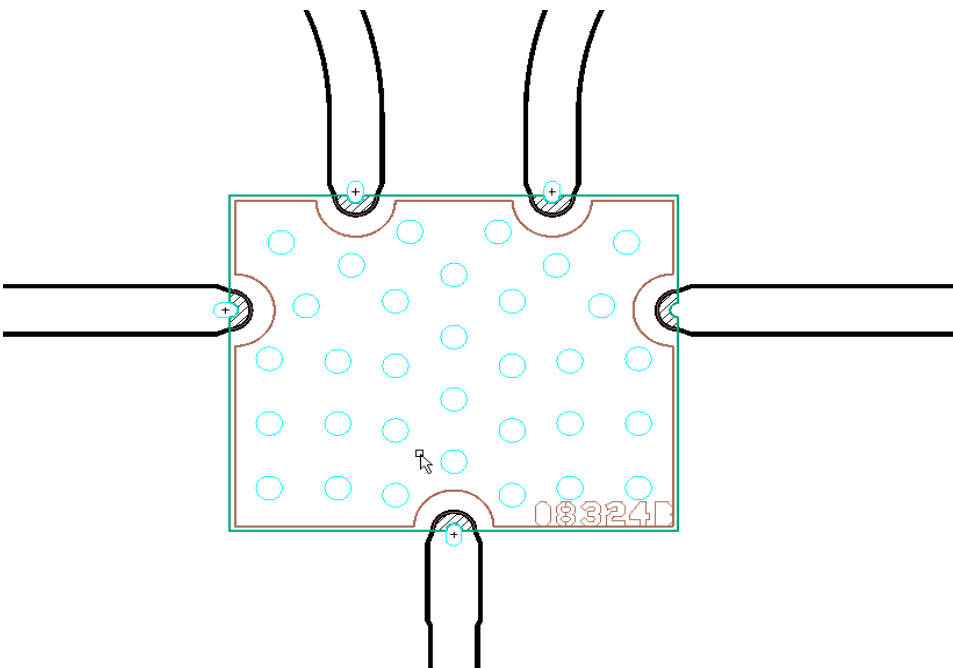


Top View



Bottom View

## Recommended PCB Layout



- 50Ω trace dimensions are application specific.
- Ensure adequate grounding beneath the part.

