


NOTES: UNLESS OTHERWISE SPECIFIED

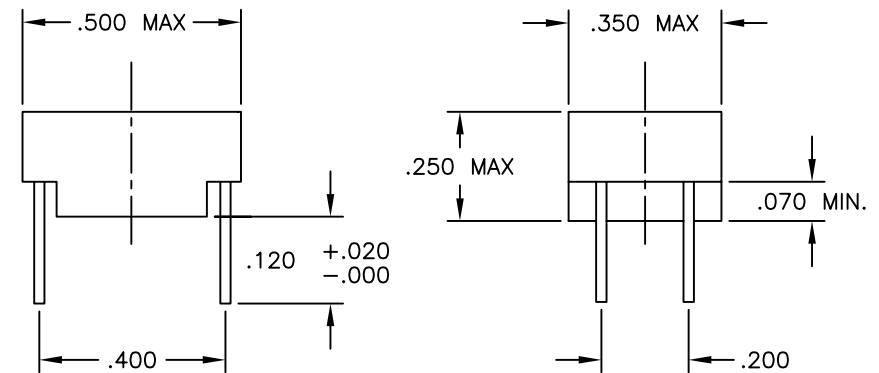
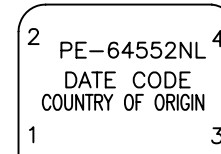
1.

NOTICE:	THIS IS A RoHS COMPLIANT COMPONENT/PRODUCT. ALL ENGINEERING CHANGES MUST HAVE PRIOR APPROVAL BY THE DESIGN CENTER.
RoHS 	

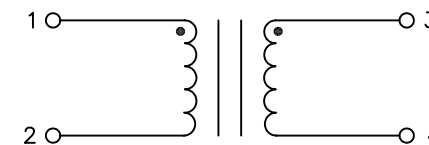
2. PLASTIC: THERMAL PLASTIC MATERIAL WITH FLAMMABILITY RATING UL 94V-0 OR BETTER.
3. SOLDERABILITY: CONFORMS TO ANSI/J-STD-002, 245°C REFLOW PEAK TEMPERATURE PER IPC/EIA J-STD-003A.
4. OPERATING TEMPERATURE: 0°C TO +70°C
5. STORAGE TEMPERATURE: -20°C TO +125°C
6. JEDEC MOISTURE: LEVEL 1.
7. DIMENSIONS ARE IN INCHES, TOLERANCES:  
.XX = ±.01 .XXX = ±.005

ELECTRICAL CHARACTERISTICS AT +25°C UNLESS OTHERWISE SPECIFIED  
(FOR REFERENCE ONLY. USED FOR CUSTOMER INFORMATION.)

PARAMETER	SPECIFICATIONS
OPERATING TEMP	0°C - 70°C
TURNS RATIO	1 : 1 ±5%
POLARITY	PER SCHEMATIC
INDUCTANCE (1-2)	2.5 mH ±20% ( AT 100 KHz 1.0 VRMS)
LEAKAGE INDUCTANCE (1-2) WITH (3-4) SHORTED	1.1 uH MAX. (AT 100KHz 20mA)
CWW (1-2) TO (3-4)	40 pF MAX. (AT 100 KHz, 20 mA)
FREQUENCY (REF)	(1-2) = 1.0 MHz MINIMUM
BETWEEN CHANNEL ISOLATION	(1-2) TO (3-4) = 2000 VAC, 1 MINUTE



FINAL OUTLINE



SCHEMATIC

© Copyright, 2012. Pulse Electronics Corp. All rights reserved. Drawing specifications subject to change without notice. (09/20/12)

PULSE CONFIDENTIAL & PROPRIETARY	PRODUCT DESCRIPTION	PS DRAWING	SHEET:	DWG. NO./ PART NO.	REV.
	XFMR,SGL,T1,1:1,1.2MH	-	1	PE-64552NL	M11