

# Gumstix Raspberry Pi CM4 Development Board

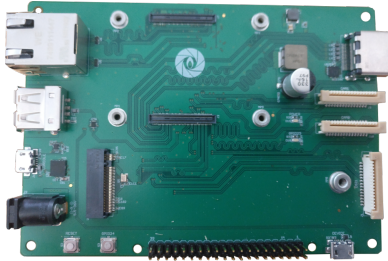
## Product datasheet

PKG900000001400

USD130.00

Designed by Gumstix in Geppetto, the GUMSTIX RASPBERRY PI CM4 DEVELOPMENT BOARD provides the following headers for breaking out the features of the Raspberry Pi CM4:

- Raspberry Pi 4 Header
- USB-UART Console Port
- DSI connector for connecting to displays
- 2 x CSI2 connector for connecting a camera
- HDMI port for audio/display
- Gigabit Ethernet port
- USB Type-A port for expandability
- M.2 (M Key) with single lane PCIe, compatible with 2280 NVMe drives and Google Coral



### Product Features

Power	
<b>Barrel Connector</b>	Industry standard barrel connector
Inter-board connector	
<b>Board-To-Board Connector</b>	2 x 100-pin Hirose DF40 Connectors
Camera	
<b>Camera Connector</b>	Vertical cable orientation connector for Raspberry Pi Camera.
Communications	
<b>Ethernet</b>	10/100/1000 Base-T
General	
<b>HDMI</b>	HDMI Type-A connector
<b>M.2 Compatible</b>	Compatible with the M.2 PCI-SIG standard.
Display	
<b>LCD Touchscreen</b>	Raspberry Pi DSI 7" Screen Compatible
Usb	
<b>USB Device</b>	Micro B USB Plug

### Other connector

- 1 × Molex HDMI SMT Connector

### Mating connector

- 2 × Stacking Board Connector, DF40 Series, Receptacle, 0.4 mm, 100, Surface Mount

### What's included

- 1 × Gumstix Raspberry Pi CM4 Dev Board

### Key component

- 1 × RJ45 Jack with Gigabit Magnetics
- 2 × Micro B USB Plug
- 1 × 2.0 mm 20V DC Power Jack
- 1 × USB Standard A Jack
- 1 × FTDI FT232RQ USB UART Interface

### Product links

- [Geppetto@Workspace](mailto:Geppetto@Workspace)

