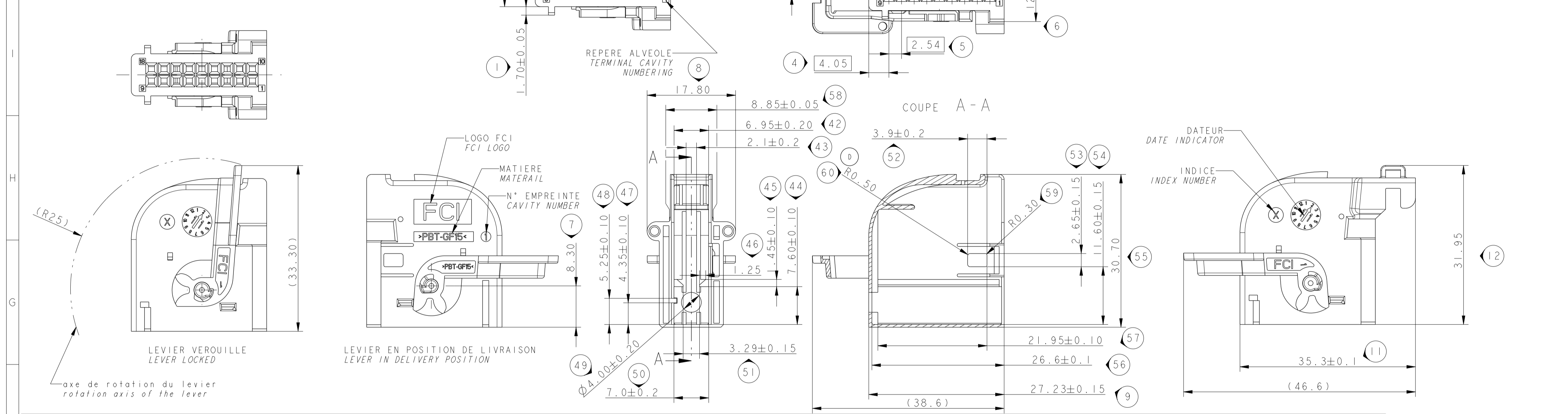


NOTA	SPECIFICATION
1	CONNECTEUR CONFORME A STE PSA 96 270 896 99 ind D ET A LA SPECIFICATION TECHNIQUE FCI FEPS 09006 FEMALE CONNECTOR ACCORDING TO STE PSA 96 270 896 99 rev D AND THE FCI TECHNICAL SPECIFICATION FEPS 09006
2	CONNECTEUR SUIVANT: FEMALE CONNECTOR ACCORDING TO: -CLASSE DE TEMPERATURE T2 SELON B217050 rev C TEMPERATURE CLASS T2 ACCORDING TO B217050 rev C -CLASSE DE VIBRATION VI SELON B217050 rev C et B217120 rev Or ENGINE VIBRATION CLASS VI ACCORDING TO B217050 rev C AND B217120 rev Or -NON ETANCHE CLASS 0 UNSEALED CLASS 0
3	PRECONISATION D'UTILISATION: PU084 USERS MANUAL: PU084
4	ALVEOLE 0.635 COMPATIBLE DUO-TWIN, MOS, DCK (voir PRECONISATION D'UTILISATION) 0.635 CAVITY COMPATIBLE TO DUO-TWIN, MOS, DCK (See USER MANUAL)
5	CONNECTEUR ET POSITION ALVEOLES CONFORMES AU PLAN D'INTERFACE STE 96 312 087 99 rev A FEMALE CONNECTOR AND CAVITIES POSITION ACCORDING TO STE 96 312 086 99 rev A
6	CONDITIONNEMENT SUIVANT NORME: E73 03 150G PACKAGING ACCORDING TO STANDARD: E73 03 150G
7	SECTION DE FILS 0.635: DE 0.35 A 0.75 mm ² 0.635 WIRE SECTION: FROM 0.35 TO 0.75 mm ²
8	MASSE DU PRODUIT LIVRABLE: VOIR TABLEAU DELIVERY CONNECTOR WEIGHT: SEE TABLE
9	DEFAUTS D'ASPECT SUR ZONE NON FONCTIONNELLES ADMIS VISUAL DEFECTS ON NO FUNCTIONAL AREAS ALLOWED
10	CODAGE MARRONS NON EQUIPES DANS LE MOULE BROWN CODING NOT EQUIPPED IN THE MOULD

3D VIEW M 11	Version	Rep	Reference / Indice	Qty/ Nbre	Designation	Matiere Material	Couleur Colour	Masse Weight
	0°	3	PP10000498	M	MODULE PORTE-CLIPS 18 VOIES FEMALE TERMINAL CARRIER 18w	PBT-GF15	NOIR BLACK	1.90g
		2	PP10000496	L	LEVIER DE VERROUILLAGE PORTE-CLIPS 18 VOIES LEVER 18w	PBT-GF15	NOIR BLACK	3.50g
	90°	3	F407500	M	MODULE PORTE-CLIPS 18 VOIES FEMALE TERMINAL CARRIER 18w	PBT-GF15	NOIR BLACK	1.90g
		2	PP10000496	L	LEVIER DE VERROUILLAGE PORTE-CLIPS 18 VOIES LEVER 18w	PBT-GF15	NOIR BLACK	3.80g
		1	See Coding Table	M	BOITIER PORTE-MODULE 18 VOIES SORTIE 0° FEMALE HOUSING 18w ROUTING 0	PBT-GF15	See Coding Table	
		1	See Coding Table	M	BOITIER PORTE-MODULE 18 VOIES SORTIE 90° FEMALE HOUSING 18w ROUTING 90	PBT-GF15	See Coding Table	



REFERENCE FCI DU PORTE CLIPS FCI FEMALE CONNECTOR PART NUMBER				CODAGE CODING				
INDICE ARTICLE REVISION PART NUMBER				INDICE ARTICLE REVISION PART NUMBER				
VERSION 0°				PP10000557	PP10000556	F190500	F590500	F990500
X				M	M	M	M	M
X				X	X	X	X	X
X				X	X	X	X	X
X				X	X	X	X	X
X				X	X	X	X	X

REFERENCE FCI DU PORTE CLIPS FCI FEMALE CONNECTOR PART NUMBER				CODAGE CODING				
INDICE ARTICLE REVISION PART NUMBER				INDICE ARTICLE REVISION PART NUMBER				
VERSION 90°				PP10000558	PP10000497	F290500	F690500	F001500
X				M	M	M	M	M
X				X	X	X	X	X
X				X	X	X	X	X
X				X	X	X	X	X
X				X	X	X	X	X

11-00135	POSITION	CHANGE DESCRIPTION
		UPDATE PART LEVEL
		SHOCK RESISTANCE IMPROVED
ECN-NO. NUMBER ECN	POSITION	CHANGE DESCRIPTION
PROJECT SPEC. SPECIFIC PRODUCT	PACKAGING SPEC. SPECIFIC DIMENSIONS	APPLICATION SPEC. SPECIFIC APPLICATION
SEE NOTA 1	SEE NOTA 3	SEE NOTA 3
TOLERANCES: NPT S8000 CO.1.4 normale		
MATERIAL: SEE TABLE		
COLOUR: SEE TABLE		
ECO EXP: C64 FE		
CREATED BY: COLLETTI	DATE: 2005/12/14	TITLE: 18W FEMALE CONNECTOR
APPROVED BY: APPR. PAR	DATE: 2011/10/28	DESIGNATION: 18W DUO-TWIN/MOS COMPATIBLE
FILE NAME: PCC0088206	NUMERO ESP: EUD04071	NUMERO CAT: 18W DUO-TWIN/MOS COMPATIBLE
NO MODIFICATION ALLOWED OUTSIDE PAS DE MODIFICATION EN DEHORS		
DRAWING NUMBER: PCC0088206		REV. IND.:
SHEET: 1		REV. IND.:
SCALE: 2:1		REV. IND.:

EUR C04 112 F29