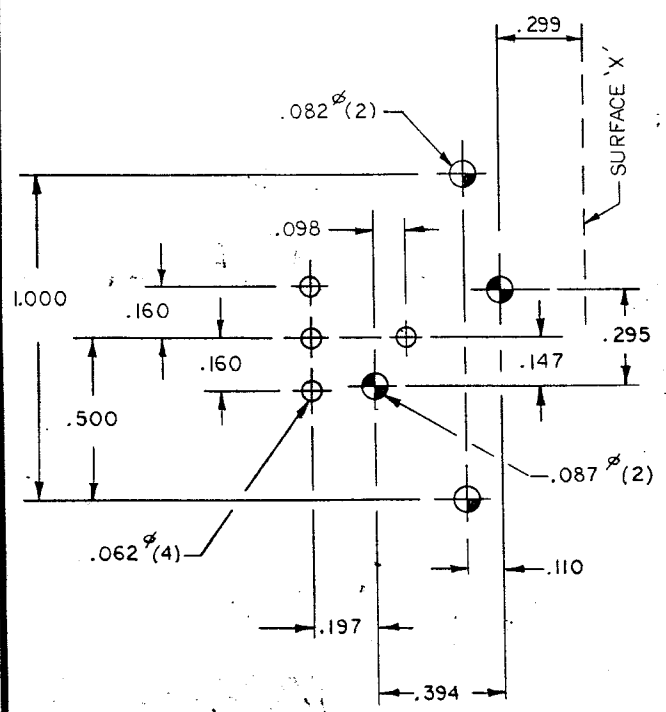
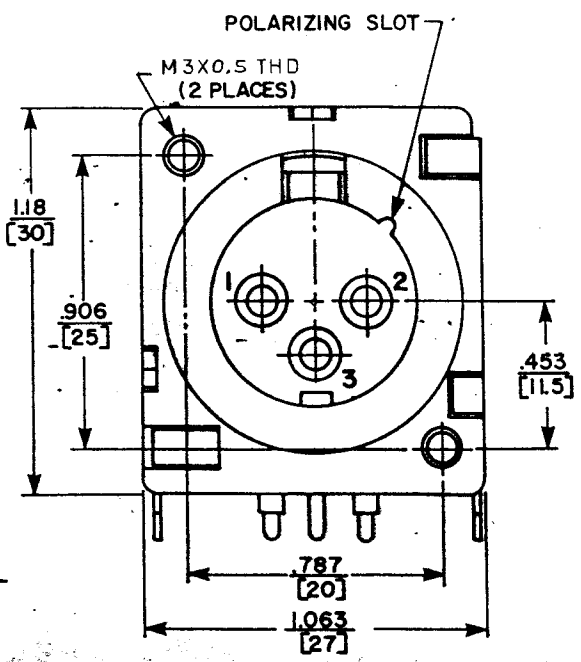
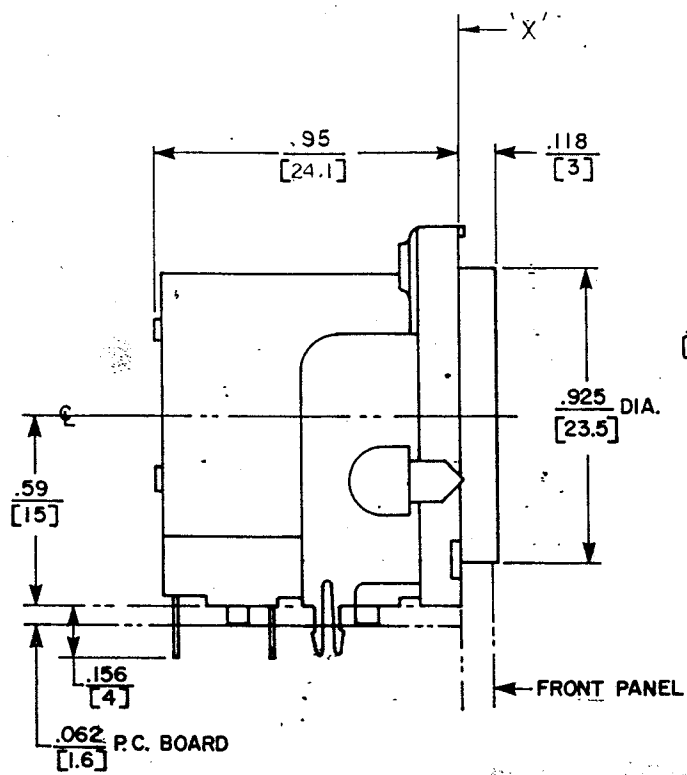


REV	DATE	BY	DATE
D	4D	C	1-30-90
M3X0.5 THD M3X.05 ECO 15834			



COMPONENT SIDE.

CUSTOMER DWG.

★ STAR SYMBOL DENOTES CRITICAL DIMENSION
SEE S C ENGINEERING STANDARD ES-0001

SIZE	MULT	TEMPER	THIS DRAWING DESCRIBES A DESIGN CONSIDERED PROPRIETARY IN NATURE, DEVELOPED AND MANUFACTURED BY SWITCHCRAFT, INC. AND IS RELEASED ON A CONFIDENTIAL BASIS FOR IDENTIFICATION PURPOSE ONLY				
			UNLESS OTHERWISE SPECIFIED		DRAWN BY KL	DATE 1-30-90	FINISH
WIDTH	LBS PER IN		1. DECIMAL DIMENSIONS ± .005		CHECKED BY <i>KL</i>	DATE 1-30-90	PER FINISH SPEC NO.
			2. FRACTIONAL DIMENSIONS ± 1/64		APPROVED BY <i>KL</i>	DATE 1-30-90	MATERIAL
			3. ANGLES ± 1°		SCALE	~	PER MAT SPEC NO.
			4. ALL DIA'S CONCENTRIC WITHIN .005 T.I.R		FIRST USED ON		
			5. ALL DIMENSIONS IN INCHES		Switchcraft® A Raytheon Company		
			6. FOR THREADS USE UNIFIED PLUG AND RING GAGES ONLY				
			7. REMOVE ALL BURRS		NAME	PART NO.	ISSUE
			8. PART TO BE FABRICATED AS SPECIFIED MAKE NO DIMENSIONAL ALLOWANCES FOR APPLIED FINISHES, I.E. PLATING, PAINTING ETC		PQG RECEPTACLE,	PQG 3MRA	D
			9. HOLES ON SAME CENTERLINE MUST BE ALIGNED WITHIN ± .002		MALE, R.A.		
			DO NOT SCALE DRAWING		SHEET	OF	

