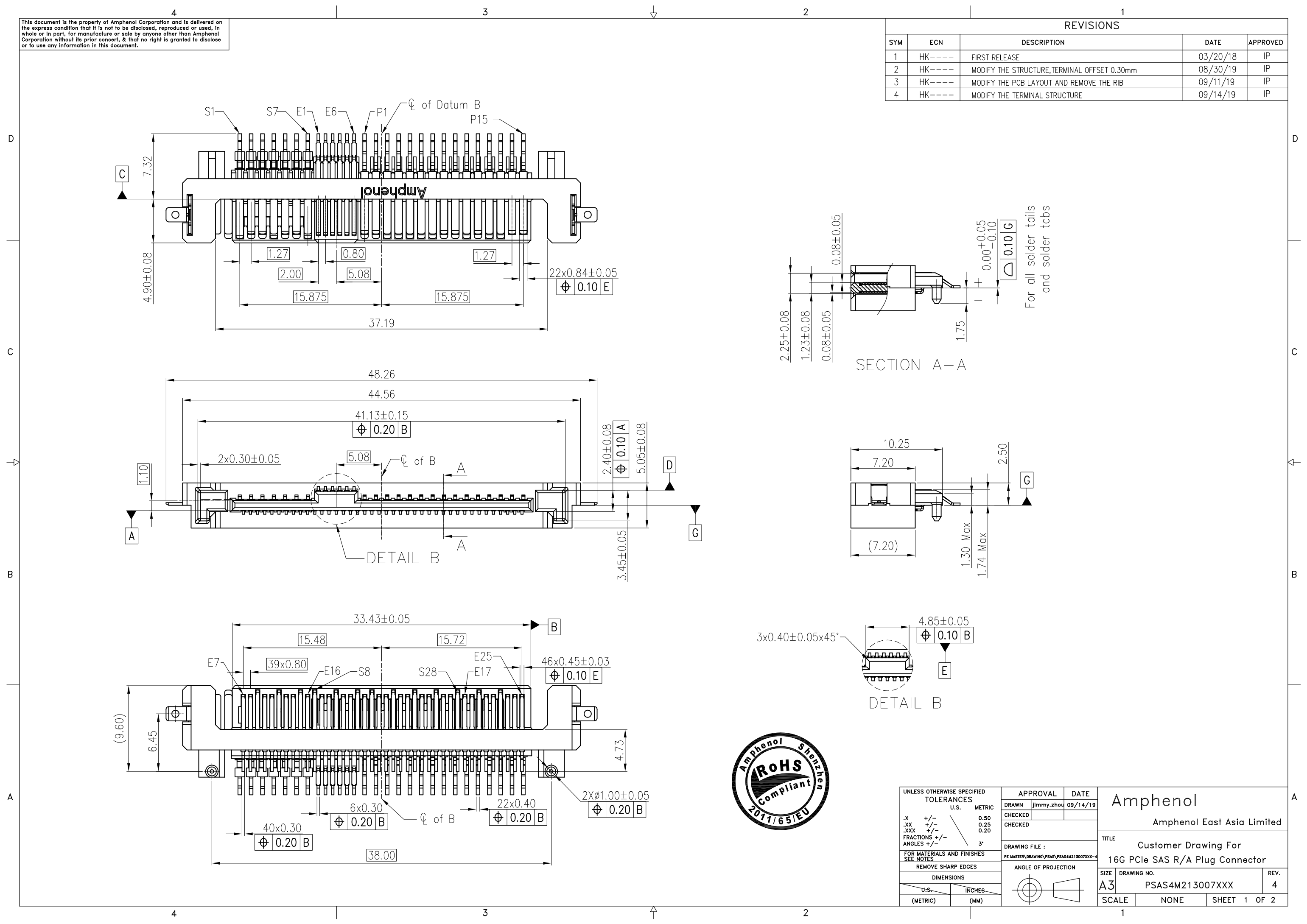


This document is the property of Amphenol Corporation and is delivered on the express condition that it is not to be disclosed, reproduced or used, in whole or in part, for manufacture or sale by anyone other than Amphenol Corporation without its prior consent, & that no right is granted to disclose or to use any information in this document.

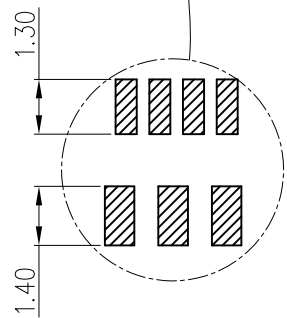
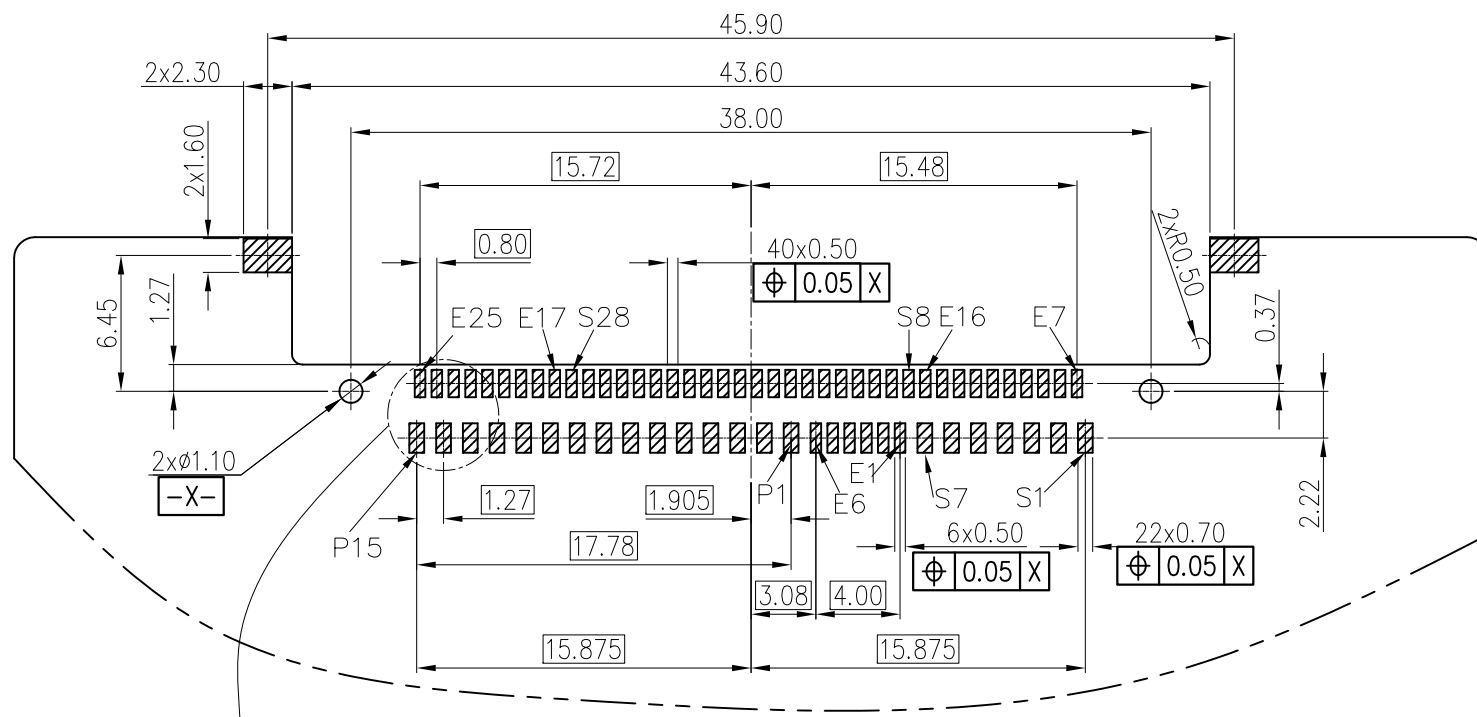
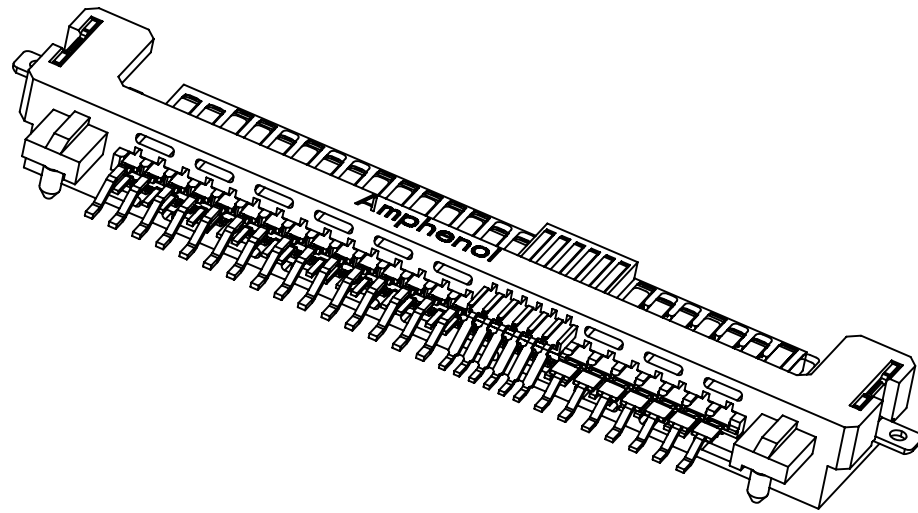
REVISIONS				
SYM	ECN	DESCRIPTION	DATE	APPROVED
1	HK----	FIRST RELEASE	03/20/18	IP
2	HK----	MODIFY THE STRUCTURE, TERMINAL OFFSET 0.30mm	08/30/19	IP
3	HK----	MODIFY THE PCB LAYOUT AND REMOVE THE RIB	09/11/19	IP
4	HK----	MODIFY THE TERMINAL STRUCTURE	09/14/19	IP



UNLESS OTHERWISE SPECIFIED TOLERANCES U.S. METRIC .X +/- 0.50 .XX +/- 0.25 .XXX +/- 0.20 FRACTIONS +/- ANGLES +/- 3°	APPROVAL	DATE	Amphenol Amphenol East Asia Limited
	DRAWN Jimmy.zhou	09/14/19	
FOR MATERIALS AND FINISHES SEE NOTES	CHECKED		TITLE Customer Drawing For 16G PCIe SAS R/A Plug Connector
REMOVE SHARP EDGES	CHECKED		
DIMENSIONS U.S. INCHES (METRIC) (MM)	DRAWING FILE : PE MASTER\DRAWING\PSAS\PSAS4M213007XXX-4		SIZE DRAWING NO. A3 PSAS4M213007XXX
	ANGLE OF PROJECTION		REV. 4
	SCALE NONE		SHEET 1 OF 2

This document is the property of Amphenol Corporation and is delivered on the express condition that it is not to be disclosed, reproduced or used, in whole or in part, for manufacture or sale by anyone other than Amphenol Corporation without its prior consent, & that no right is granted to disclose or to use any information in this document.

REVISIONS				
SYM	ECN	DESCRIPTION	DATE	APPROVED
		REFER TO SHEET 1		



RECOMMENDED PCB LAYOUT
GENERAL TOLERANCE ±0.05mm

Scale 2:1

NOTES

- MATERIAL
 - HOUSING: HIGH TEMPERATURE THERMOPLASTIC, UL94V-0, COLOR:BLACK.
 - CONTACTS : COPPER ALLOY
PLATING: REFER TO P/N SYSTEM ON MATING AREA.
1.27um MIN NICKEL UNDER PLATED OVERALL.
2.54um MIN PURE MATTE TIN ON SOLDER TAILS.
 - SOLDER TABS: COPPER ALLOY
2.54um MIN PURE MATTE TIN OVER 1.27um MIN NICKEL.
- GENERAL SPECIFICATION
 - CURRENT RATING: 1.5A/PER PIN (POWER SECTION).
 - CONTACT RESISTANCE: 30mΩ MAX (INITIAL).
 - INSULATOR RESISTANCE: 1000MΩ MIN.
 - DIELECTRIC WITHSTANDING VOLTAGE: 500 VAC
 - OPERATION TEMPERATURE: -40°C~+85°C
 - CHARACTERISTIC IMPEDANCE: 85 Ohm(0.80PITCH)/100 Ohm(1.27PITCH)
- DIMENSIONING SHALL BE INTERPRETED PER ASME Y14.5M 1994.
- MATERIAL SHOULD BE FULFILLED AMPHENOL SPEC.# S-SN-002, FOR HALOGEN FREE PRODUCTS, ALSO NEED TO MEET S-SN-004.
- PIN S1/S4/S7/S8/S11/S14/S16/S19/S22/S25/S28/E219/E22 ARE CONNECTED TOGETHER WITH CONDUCTIVE PLASTIC.
- RECOMMENDED THICKNESS FOR PCB IS 1.0~1.57mm
- ORDER P/N SYSTEM: PSAS4M213007XXX

MATING AREA PLATING	PACKING STYLE
1- 0.76um MIN Au.	NIL- TRAY
2- 0.38um MIN Au.	TR- TAPE AND REEL WITH CAP
3- GOLD FLASH	NT- TAPE AND REEL W/O CAP
4- G/F over Pd/Nickel	



UNLESS OTHERWISE SPECIFIED TOLERANCES U.S. METRIC .X +/- 0.50 .XX +/- 0.25 .XXX +/- 0.20 FRACTIONS +/- ANGLES +/- 3°	APPROVAL	DATE	Amphenol Amphenol East Asia Limited
	DRAWN Jimmy.zhou	09/14/19	
FOR MATERIALS AND FINISHES SEE NOTES	CHECKED		TITLE Customer Drawing For
REMOVE SHARP EDGES	CHECKED		16G PCIe SAS R/A Plug Connector
DIMENSIONS	DRAWING FILE : PE MASTER\DRAWING\PSAS\PSAS4M213007XXX-4		SIZE DRAWING NO. A3 PSAS4M213007XXX
U.S. INCHES (METRIC) (MM)	ANGLE OF PROJECTION 		REV. 4
	SCALE	NONE	SHEET 2 OF 2