

PT-15 / PTC-15

15-mm carbon / cermet through-hole potentiometer

The PT-15 and PTC-15 potentiometers offer control where frequent adjustment is required. The shaftless design allows for employment of different engagement mechanisms, such as a customized shaft, a motor control or a human interface adjustment. This potentiometer can also control variable outputs including frequency, change in motor speed or volume.



KEY FEATURES

- ▶ Excellent performance (up to 3% linearity)
- ▶ Carbon or cermet resistive element
- ▶ Up to 38 mechanical detents for tactile feedback
- ▶ Up to 100.000 life cycles
- ▶ IP54 protection
- ▶ Magazine packaging for automatic insertion available
- ▶ Polyester / Alumina substrate
- ▶ Wiper positioned at initial, 50% or fully clockwise
- ▶ Loose and assembled shaft and knobs
- ▶ Linear, logarithmic and antilogarithmic tapers
- ▶ Self extinguishable plastic (UL 94V-0) available
- ▶ SPDT switch and low torque version available

ELECTRICAL SPECIFICATIONS

	PT-15	PTC-15
Taper ¹	Lin, Log, Alog	
Range of values ¹	(Decad. 1.0 - 2.0 - 2.2 - 2.5 - 4.7 - 5.0)	
Lin	100Ω ≤ Rn ≤ 5MΩ	
Log, Alog	1KΩ ≤ Rn ≤ 5MΩ	
Tolerance ¹		
100Ω ≤ Rn ≤ 1MΩ	± 20%	
1MΩ < Rn ≤ 5MΩ	± 30%	
Max. Voltage		
Lin	250 VDC	
Log, Alog	125 VDC	
Nominal power	50°C (122°F)	70°C (158°F)
Lin	0.25 W	0.50 W
Log, Alog	0.12 W	0.25 W
Residual resistance ¹	≤ 0.5% Rn (5Ω min.)	
Equivalent noise resistance	≤ 3% Rn (3Ω min.)	
Operating temperature	-25°C to +70°C ² [-13°F to + 158°F]	-40°C to +90°C ³ [-40°F to + 194°F]

¹ Others available on request; ² Up to 85°C depending on application.; ³ +120°C/+248°F upon request

APPLICATIONS

- ▶ Appliance program selection
- ▶ Thermostat adjustment
- ▶ Timer and control relays
- ▶ Consumer electronics
- ▶ Power tool controls
- ▶ Test and measurement equipment

PT-15 / PTC-15

15-mm carbon / cermet through-hole potentiometer

MECHANICAL SPECIFICATIONS

	PT-15	PTC-15
Mechanical rotation angle ¹	265° ± 5°	
Electrical rotation angle	240° ± 20°	
Torque Rotational Stop	0.5 to 2.5 Ncm (0.7 to 3.4 in-oz) > 10 Ncm (>14 in-oz)	
Life ²	Up to 100k cycles	Up to 10k cycles

¹ 240° ± 5° available upon request. Endless rotation available: ST-15; ² Others check availability

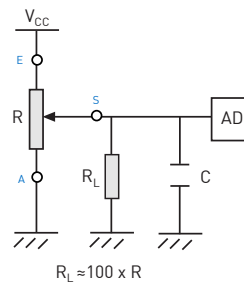
ENVIRONMENTAL TESTING

	Test method (CEI 393-1)	PT-15 ΔR(%)- Piher typical test results	PTC-15 ΔR(%)- Piher typical test results
Electrical life	1.000h at 50°C; 0.15W 1.000h at 70°C; 0.33W	±5% n/a	n/a ±2%
Mechanical life	1000 cycles at 10 to 15 cpm	±3 % (Rn < 1M)	±2%
Temperature coefficient	-25°C; +70°C -40°C; +90°C	±300 ppm/°C (Rn < 100K) n/a	n/a ±100 ppm/°C (Rn < 100K)
Thermal cycling	16h at 85°C and 2h at -25°C 16h at 90°C and 2h at -40°C	±2.5% n/a	n/a ±2%
Damp heat	500h at 40°C and 95% relative humidity (RH)	±5%	±2%
Vibration	2h each plane at 10Hz - 55Hz	±2%	±2%
Storage	6 month at 23°C ±2°C and 50% RH	±2.5%	±2%

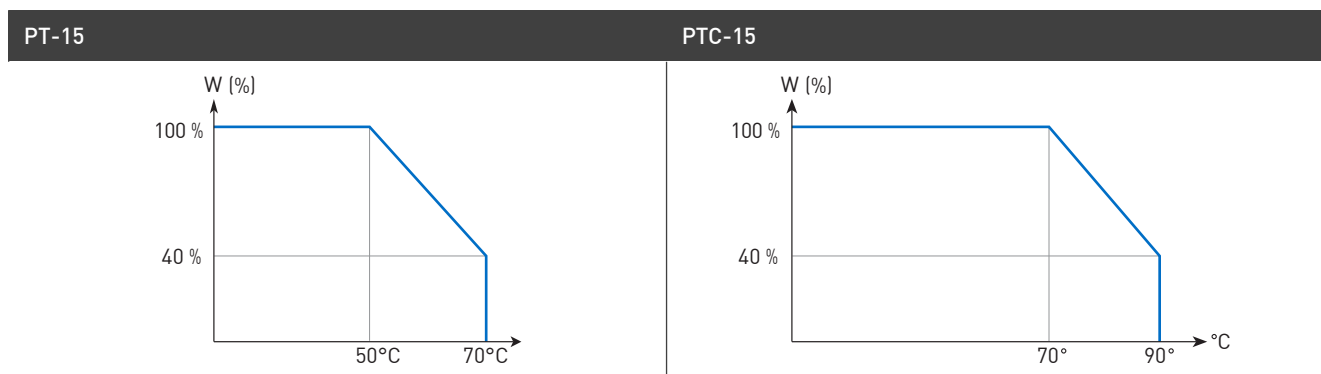
Out of range values may not comply with these results. Standard test conditions: temperature: 23°C ±2°C and 45% to 70% RH

RECOMMENDED CONNECTIONS

Recommended connection circuit for a position sensor or control application (voltage divider circuit electronic design).



POWER RATING CURVE



PT-15 / PTC-15

15-mm carbon / cermet through-hole potentiometer

HOW TO ORDER

Carbon potentiometer (Example: PT15LH01-223A2020-S)

Series				Optional features														
PT15	---	---	---	---	---	---	---	---	---	---	---	---	---	---	---	---	---	S
Series	Rotors¹	Mounting method²	Ω-Value³	Taper	Tolerance⁴	Life⁵	Cut track	Detents	Shaft/Thumbwheel	Flammability⁶	Shaft/Rotor color⁷	Torque⁸	Wiper position	Packaging⁹				
	L N G M C F R T W X Y Z	H01 horizontal adjust H05 H25 H02 crimped terminals H06 H10 V02 vertical adjust V12 V15 V17 V18 V20 V24 V21 crimped terminals V22 V23 V25	101 = 100Ω 201 = 200Ω ... 504 = 500KΩ 505 = 5MΩ	A = lin. B = log. C =alog.	0505 = ±5% 0707 = ±7% 1010 = ±10% 2020 = ±20% 3030 = ±30% XXYY = +XX-YY%	[empty] = 1K cycles E = 10K cycles U = 100K cycles	[empty] PCI PCF	[empty] PAI PAM PAF P11 P1F P02 ... P38	[empty] = none 01 = Fig.1 02 = Fig.2 28 = Fig.28	[empty] = standard I = non-flammable	[empty] AM = yellow AZ = blue CR = cream GR = grey MA = brown NA = orange NE = black RO = red VE = green	[empty] = standard L = ≤ 1.5 Ncm	[empty] = initial PM = 50% PF = final	[empty] = bulk T = magazines R = embossed tape				

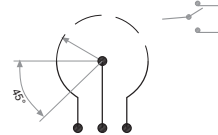
Cermet potentiometer (Example: PTC15LH01-223A2020)

Series						Optional features												
PTC15	---	---	---	---	---	---	---	---	---	---	---	---	---	---	---	---	---	---
Series	Rotors¹	Mounting method²	Ω-Value³	Taper	Tolerance⁴	Life⁵	Detents	Shaft/Thumbwheel	Shaft/Rotor color⁷	Torque⁸	Wiper position	Packaging⁹						
	L N G M C F R T W X Y Z	H01 horizontal adjust H05 H15 H02 crimped terminals H06 H10 V02 vertical adjust V12 V15 V17 V18 V21 crimped terminals V22 V23 V25	101 = 100Ω 201 = 200Ω ... 504 = 500KΩ 505 = 5MΩ 000 = CM	A = lin. B = log. C =alog.	0505 = ±5% 0707 = ±7% 1010 = ±10% 2020 = ±20% 3030 = ±30% XXYY = +XX-YY%	[empty] = 1K cycles E = 10K cycles	[empty] PAI PAM PAF P11 P1F P02 ... P38	[empty] = none 01 = Fig.1 02 = Fig.2 28 = Fig.28	[empty] AM = yellow AZ = blue GR = grey MA = brown NA = orange NE = black RO = red VE = green	[empty] = standard L = ≤ 1.5 Ncm	[empty] = initial PM = 50% PF = final	[empty] = bulk T = magazines R = embossed tape						

1. Rotors: "Z" adjustment only available on "H"-mounting versions. Standard color for the "T" rotor: Orange.

2. Mounting method: "V24" terminals material: brass.

3. Ω- Value: XXX - First two digits of Ω-value 000 = CM = 45° switch SPDT version
XXX - Number of zeros



4. Tolerance: for custom tolerance please check availability: info@piher.net

5. Life: "U" only available for low-torque versions and to be studied case by case.

6. Non-flammable according to UL 94V-0: housing, rotor and shaft. PTC-15 made of non-flammable material by standard.

7. Shaft/rotor color: Without shaft: only the rotor. With shaft: only the shaft.

8. Torque: Detent option not available with low torque models.

9. Packaging: Magazine packaging available for all H and V12, V02, V21, V15 and V23 mounting.

PT-15 / PTC-15

15-mm carbon / cermet through-hole potentiometer

STANDARD CONFIGURATION		
	PT-15	PTC-15
Life	1.000 cycles	
Cut track	no	n/a
Detents	none	
Packaging	bulk	
Shaft/thumb wheel	none	
Non-flammability	no	yes
Housing color	black	cream
Rotor color	white	cream
Wiper Position	initial	
Torque	0.5 to 2.5 Ncm	
Terminal material	steel	brass
Linearity	not controlled	

ROTORS

Wiper shown at initial position				
L Screw driver - through hole	N Removable shaft or thumbwheel	G Removable shaft or thumbwheel		
Wiper shown positioned at 50%				
M Hexagonal - through hole	C	F	R	T
With inserted shaft		With inserted thumbwheel		
W Adjustable from terminal side	X Adjustable from collector side	Y Adjustable from terminal side	Z Adjustable from collector side	

Default delivery is at initial position.



Download the STEP file here:
<https://www.piher.net/piher/?p=916>

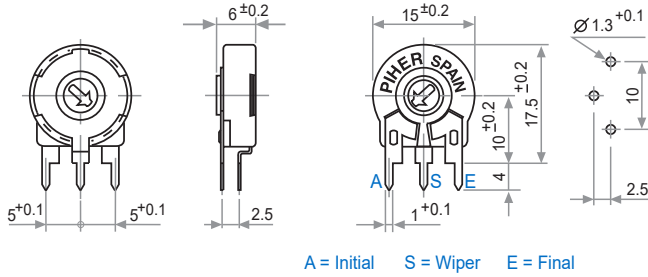
PT-15 / PTC-15

15-mm carbon / cermet through-hole potentiometer

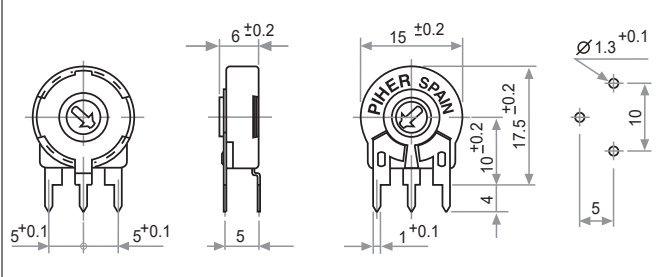
MOUNTING METHOD

Horizontal adjust / vertical mounting

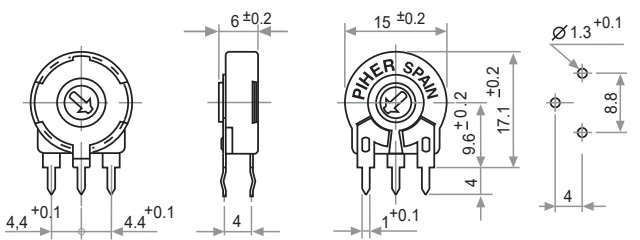
H01 - 2.5mm / H02 with crimped terminals



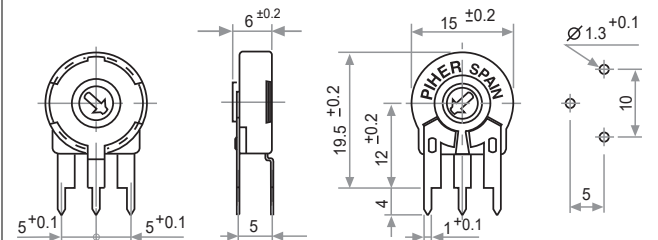
H05 - 5mm / H10 with crimped terminals



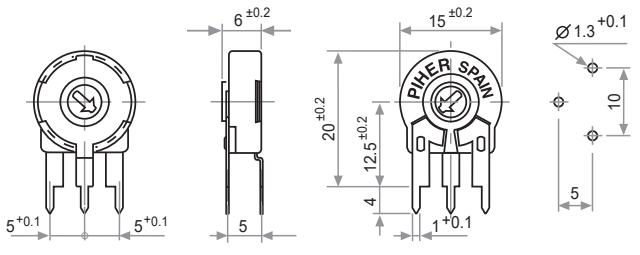
H06 - B



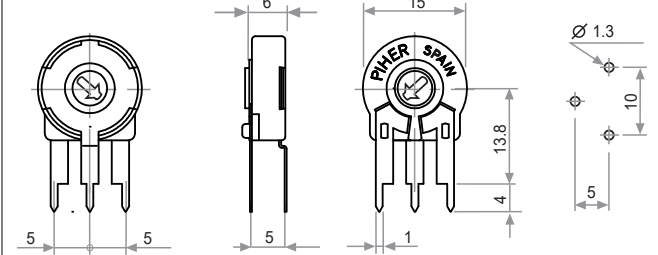
H15 - A5



H25 - C5

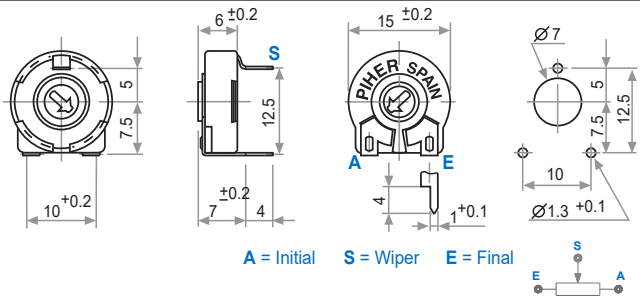


Available on request

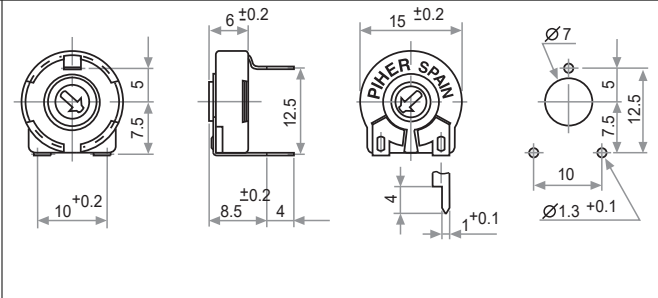


Vertical adjust / horizontal mounting

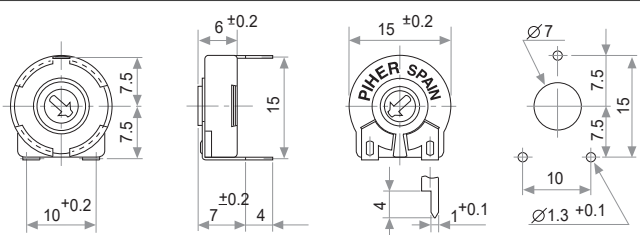
V02 - 12.5mm / V21 with crimped terminals



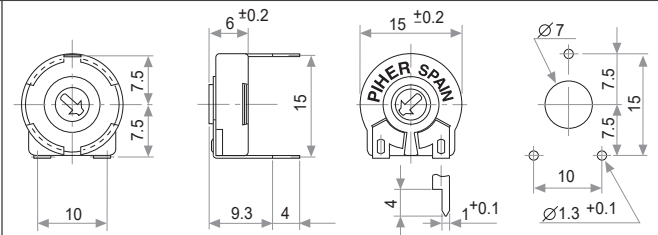
V12 - 12.5mm / V22 with crimped terminals



V15 - 15mm / V23 with crimped terminals



V20 - 15mm (L)



PT-15 / PTC-15

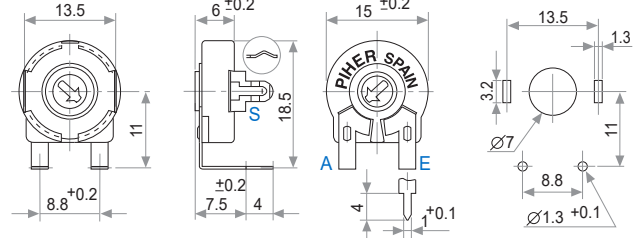
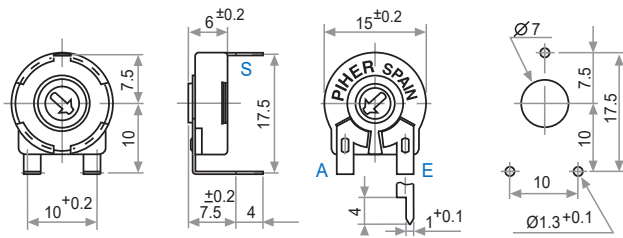
15-mm carbon / cermet through-hole potentiometer

MOUNTING METHOD

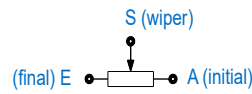
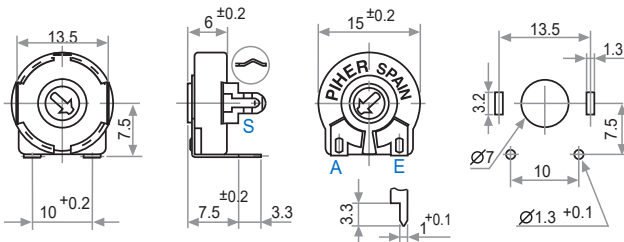
Vertical adjust / horizontal mounting

V17 - 17.5mm / V25 with crimped terminals

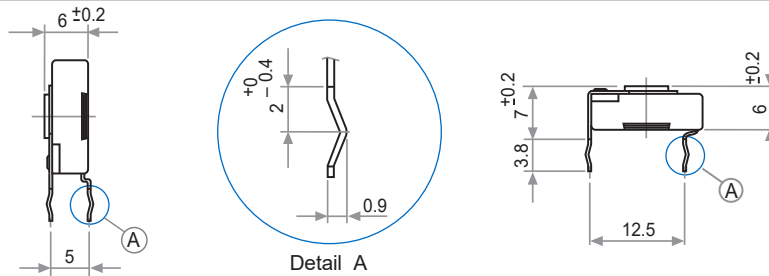
V18 - 18.5mm (D)



V24 - 15mm (D15)



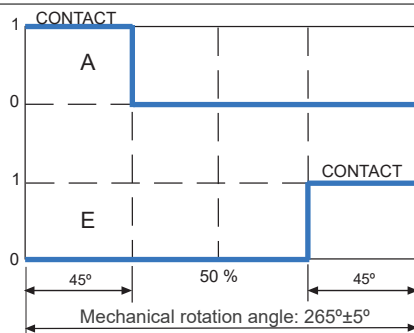
CRIMPED TERMINALS (DETAIL)



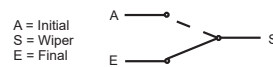
STANDARD RESISTANCE-VALUES AND TOLERANCES

Resistance Ω	100	200	220	250	470	500	1K	2K	2.2K	2.5K	4.7K	5K	10K	20K	22K	25K	47K	50K	100K	200K	220K	250K	470K	500K	1M	2M	2.5M	4.7M	5M
Order Code	101	201	221	251	471	501	102	202	222	252	472	502	103	203	223	253	473	503	104	204	224	254	474	504	105	205	255	475	505
Tolerance	20%																								30%				

SWITCH VERSIONS AVAILABLE WITH OR WITHOUT DETENTS



Standard Specification
 Power rating: 24V / 15mA
 ON position resistance: $\leq 5\Omega$
 Insulation resistance: $\geq 30M\Omega$

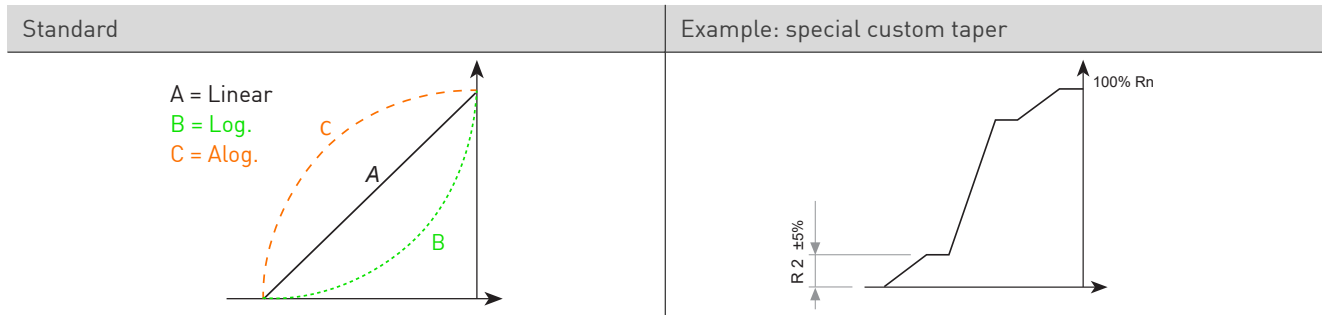


Contact Piher Sensing Systems for ordering information.

PT-15 / PTC-15

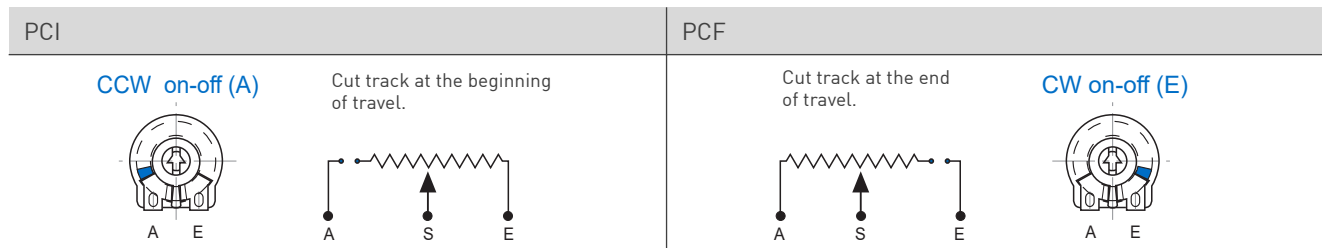
15-mm carbon / cermet through-hole potentiometer

TAPERS



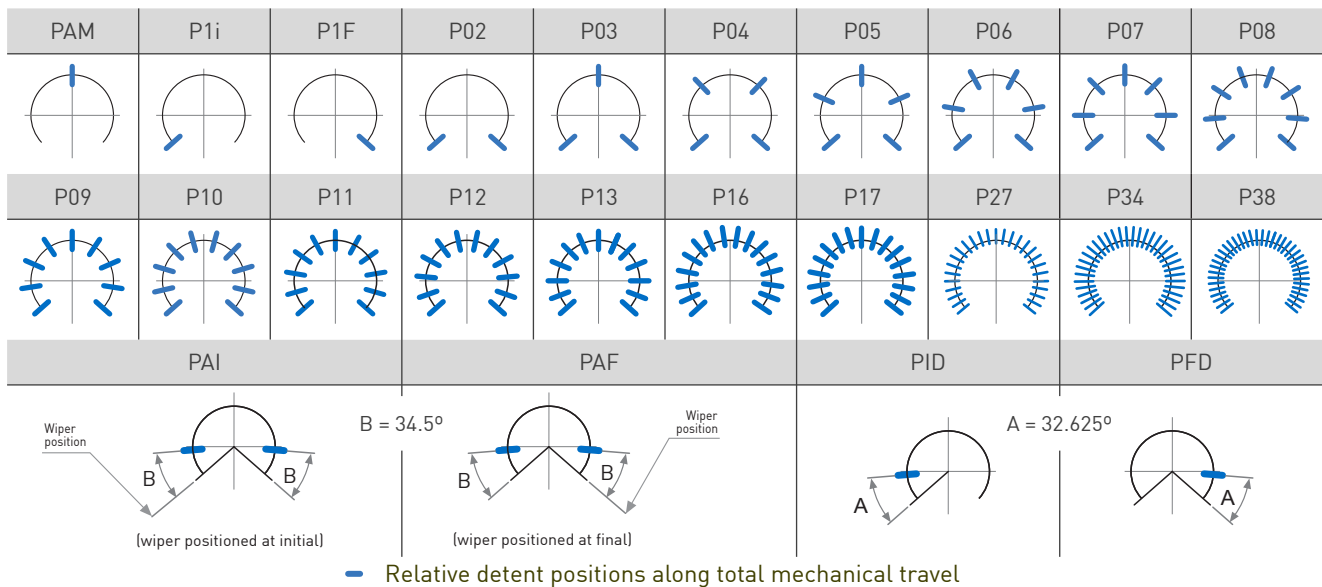
For more information on custom tapers contact Piher Sensing Systems.

CUT TRACKS (OPEN CIRCUIT DESIGN)



Other configurations available upon request. Cut Track not available for PTC-15.

DETENTS

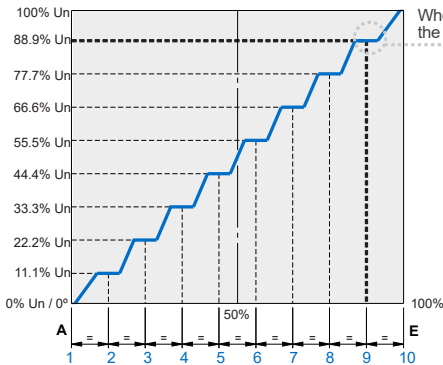


- Standard mechanical life is 500 cycles.
- Long life versions are available upon request and have the following characteristics at T^a: Potentiometers with 1 to 3 detents up to 10K cycles; Potentiometers with 4 and more detents up to 5K cycles
- Please consult Piher Sensing Systems if unique non-overlapping values at each detent position or LOG/ALOG tapers are required.
- Different output voltage values can be matched at each detent position [see next section].
- Detent torque can vary from 1.2 to 2.5 times the standard potentiometer torque. For all detents versions of more than 13 detents the detent torque will be 0.5 to 3.5 Ncm
- For V18 and V24 mounting detent configuration will be studied case by case.
- For more than 13 detents versions please contact Piher Sensing Systems.

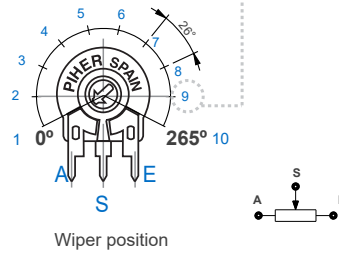
PT-15 / PTC-15

15-mm carbon / cermet through-hole potentiometer

STEPPED OUTPUTS / CONSTANT VALUE ZONES



When the potentiometer's wiper is located at detent n°9, the output voltage will be 88.9% Un \pm % tolerance.

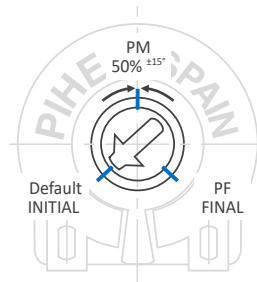


IMPROVED REPEATABILITY

Constant value zones can be combined with strategically located mechanical detents to provide exact alignment between the electrical output (flat areas) and the mechanical detent position. This provides clear mechanical positions that are not only repeatable, but perfectly aligned electrical outputs at each of the (detent) angles. The detents also prevent output values from changing due to vibration or accidental rotor movements. The result is a higher level of precision in controlling lighting, temperature, motor or other electronic control systems.

Contact Piher Sensing Systems for ordering information.

POSITIONING



Special delivery positions available on request.

PACKAGING

Bulk



Dimensions (mm): 185x85x80

Without shaft: 400 units per box
 With thumbweel: 200 units per box
 With shaft: contact Piher Sensing Systems

PT-15 / PTC-15

15-mm carbon / cermet through-hole potentiometer

SHAFTS AND THUMBWHEELS (TOP VIEW, FOR N, G AND T ROTOR TYPES)

Hollow shafts models

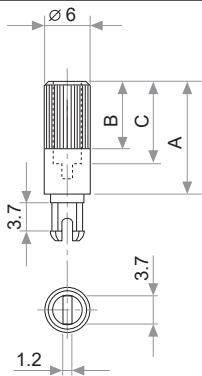


Fig.	Ref.	A	B	C
1	5272	12	9	8
2	5214	19	9	15
5	5208	9.5	6.5	5.5
9	5216	35	9	31
10	5218	37.8	9	33.8
11	5209	35	25	31

A = Length measured from rotor surface
B = Knurling length
C = Hollow depth

Solid shafts models

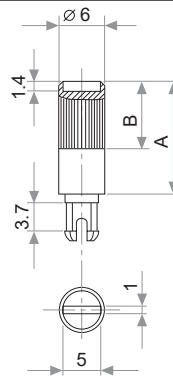


Fig.	Ref.	A	B
6	5219	15	9
7	5220	16.8	9
8	5207	25.3	9
12	5227	46	5

Slot (1 x 1.4) perpendicular to wiper position.
Fig. 12 slot is on line with wiper position.

Fig. 3 - Ref. 5372

Fig. 15 - Ref. 5217

Fig. 17 - Ref. 5210

Fig. 18 - Ref. 5271

Fig. 19 - Ref. 6032*

Fig. 20 - Ref. 5369*

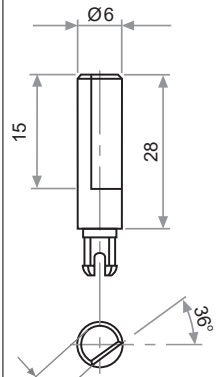
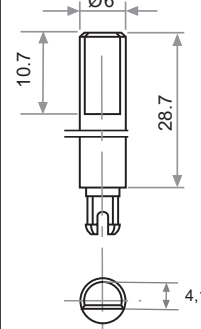
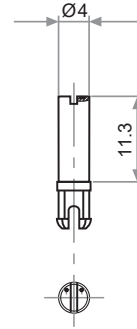
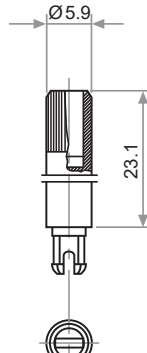
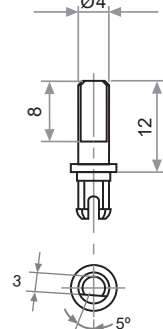
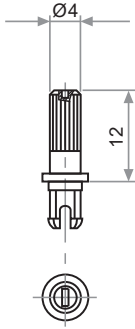


Fig. 21 - Ref. 6031*

Fig. 22 - Ref. 6029

Fig. 23 - Ref. 6022

Fig. 29 - Ref. 6162

Fig. 25 - Ref. 6059

Fig. 27 - Ref. 5268*

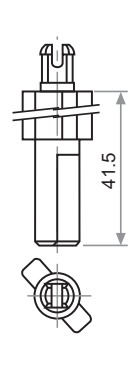
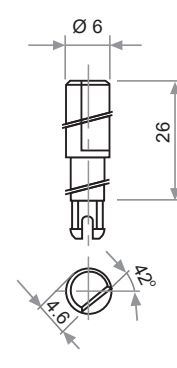
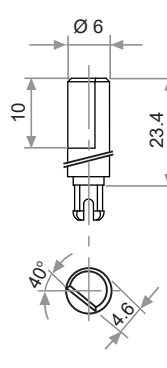
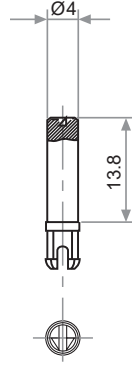
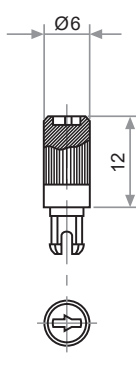
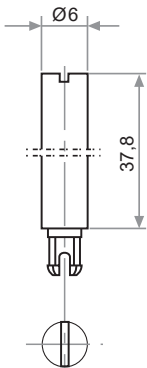
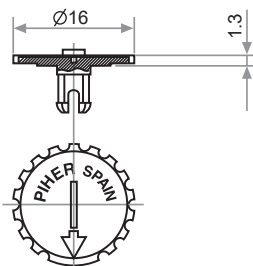
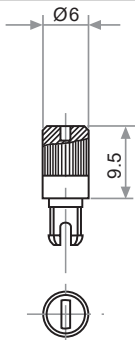


Fig. 28 - Ref. 6055

Fig. 4 - Ref. 5371



Thumbwheel and shafts are delivered unassembled if not specified otherwise in part number code (W, X, Y, Z). The position of the thumbwheel Fig 4 can be indicated in part number code: Initial (default), 50% (PM) or Final (PF), shafts will be delivered at random position by default. Custom specific positions are available for all shafts and thumbwheel on request.

The plastic color can be stated in the part number.
Non flammable plastic available, if potentiometer is order with non-flammable plastic (UL-94V0), the shaft or knob will be delivered with non-flammable plastic.
If you wish to use your own plastic shaft/knob/actuator please contact Piher for advice about compatible materials.
*Not available in self-extinguishable plastic.