

Features

- Designed to meet the CCITT 1.430 pulse waveform template requirement
- Low leakage inductance
- 1.5 kVrms HIPOT PRI/SEC in conformance with international safety standards
- Weight - 8 g
- Operating temperature 0 °C to +70 °C



This series is $\text{Sc}^1 \text{M}/\text{R}_U$ not recommended for new designs.

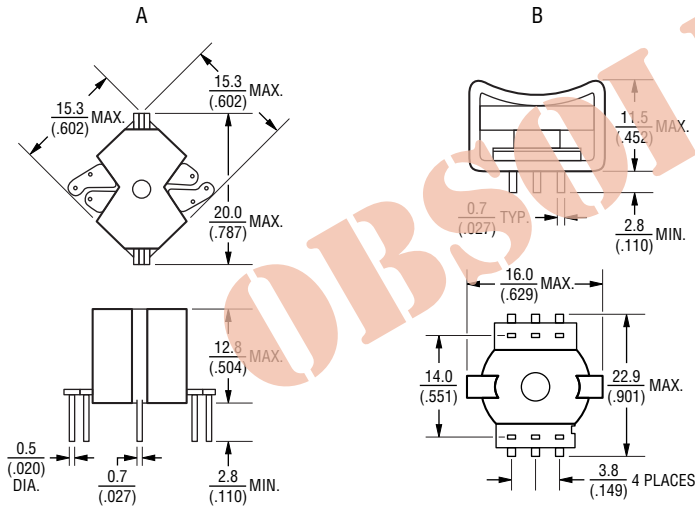
- RoHS compliant*

PT233 Series - ISDN S-Interface Isolation Transformers

Electrical Specifications @ 25 °C

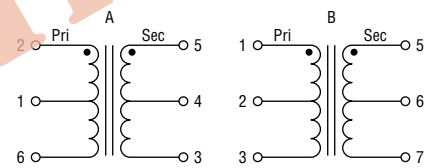
Part Number	Turns Ratio ($\pm 2\%$)	Primary Inductance (mH min.)	Primary Leakage Inductance (μH max.)	Pri DCR ($\Omega \pm 15\%$)	Sec DCR ($\Omega \pm 15\%$)	Package Schematic
PT23301L	1:2	20	30	1.2	11.0	A
PT23302L	1:2.5	22	20	2.8	6.5	A
PT23303L	1:1.8	22	20	2.8	5.5	A
PT23321L	1:2	20	15	3.0	4.5	B

Product Dimensions



DIMENSIONS: $\frac{\text{MM}}{(\text{INCHES})}$

Electrical Schematic



Packaging Specifications

Package A..... 55pcs./tray
 Package B..... 45 pcs./tray

How To Order

PT2330x or PT23321 L

Model _____
 Termination _____
 L = Tin only (RoHS Compliant)