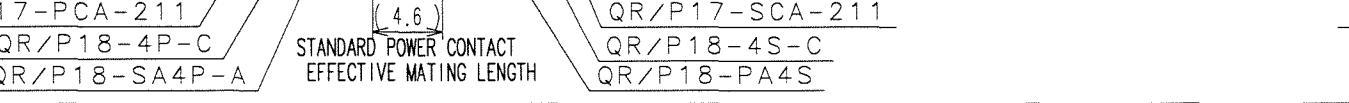
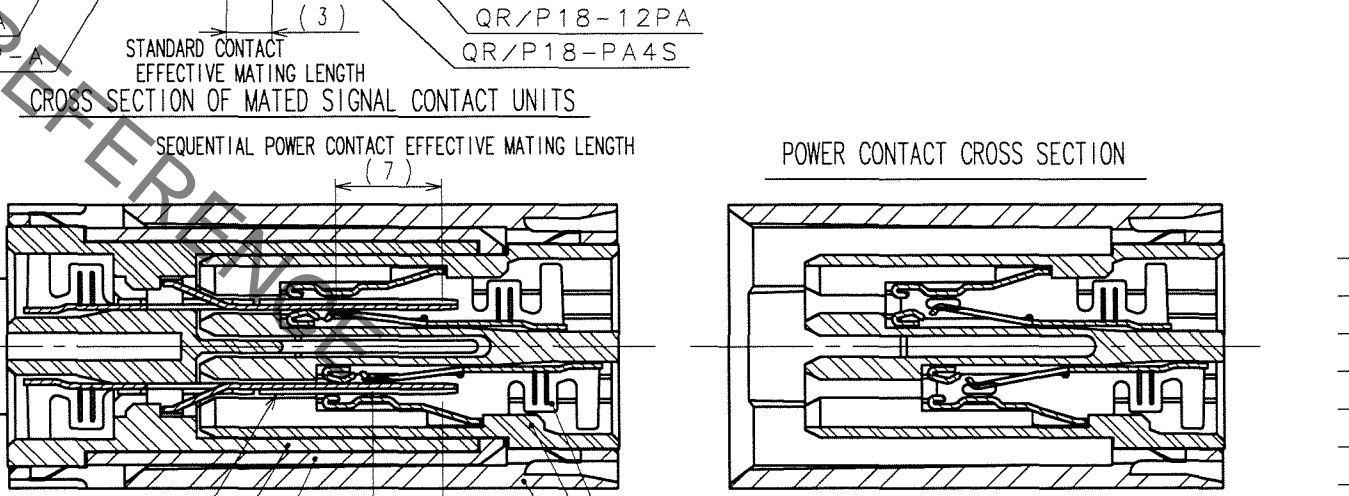
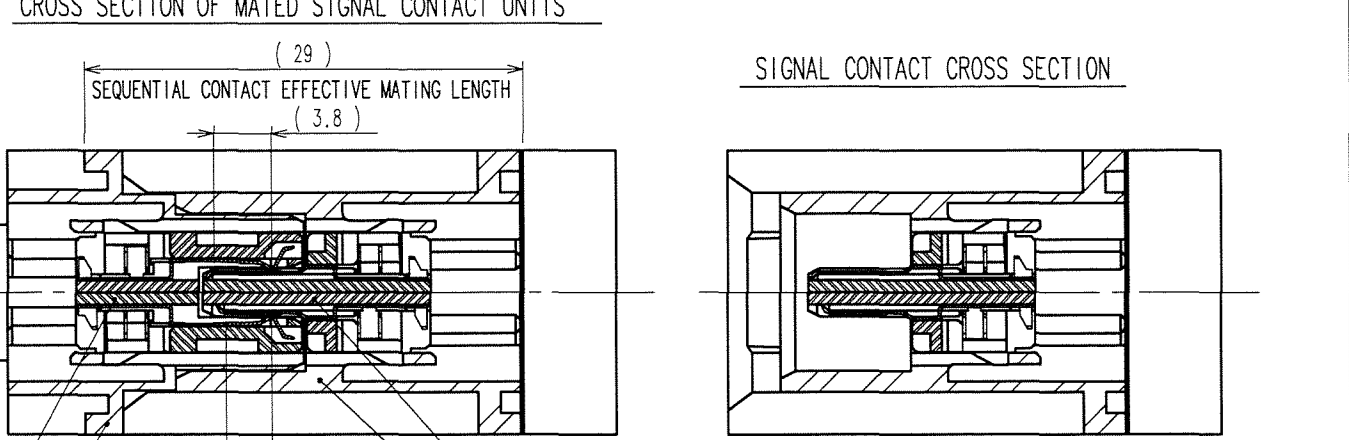
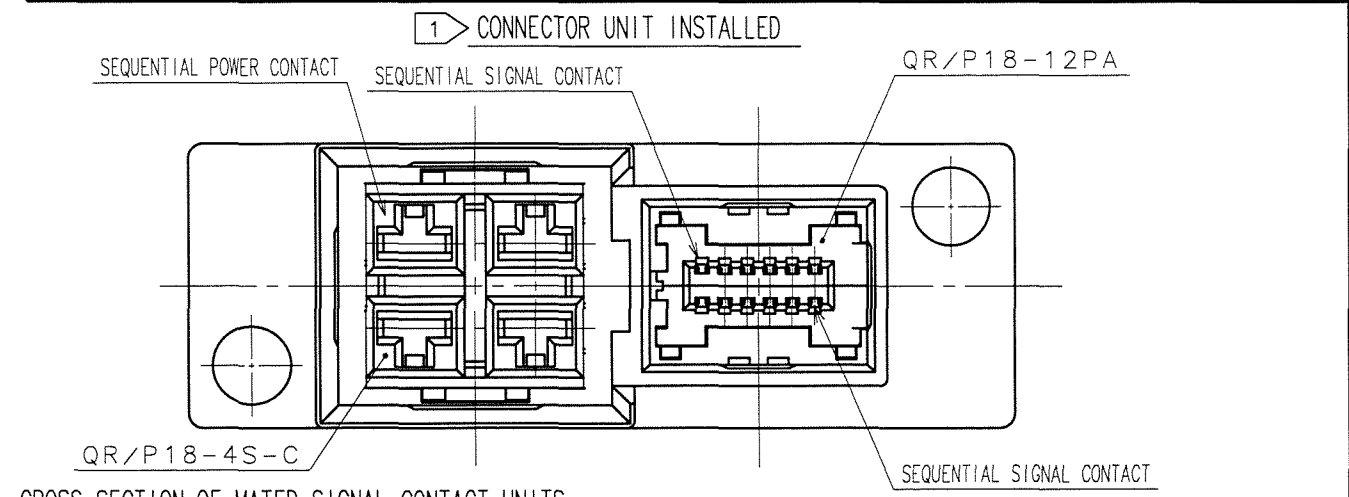
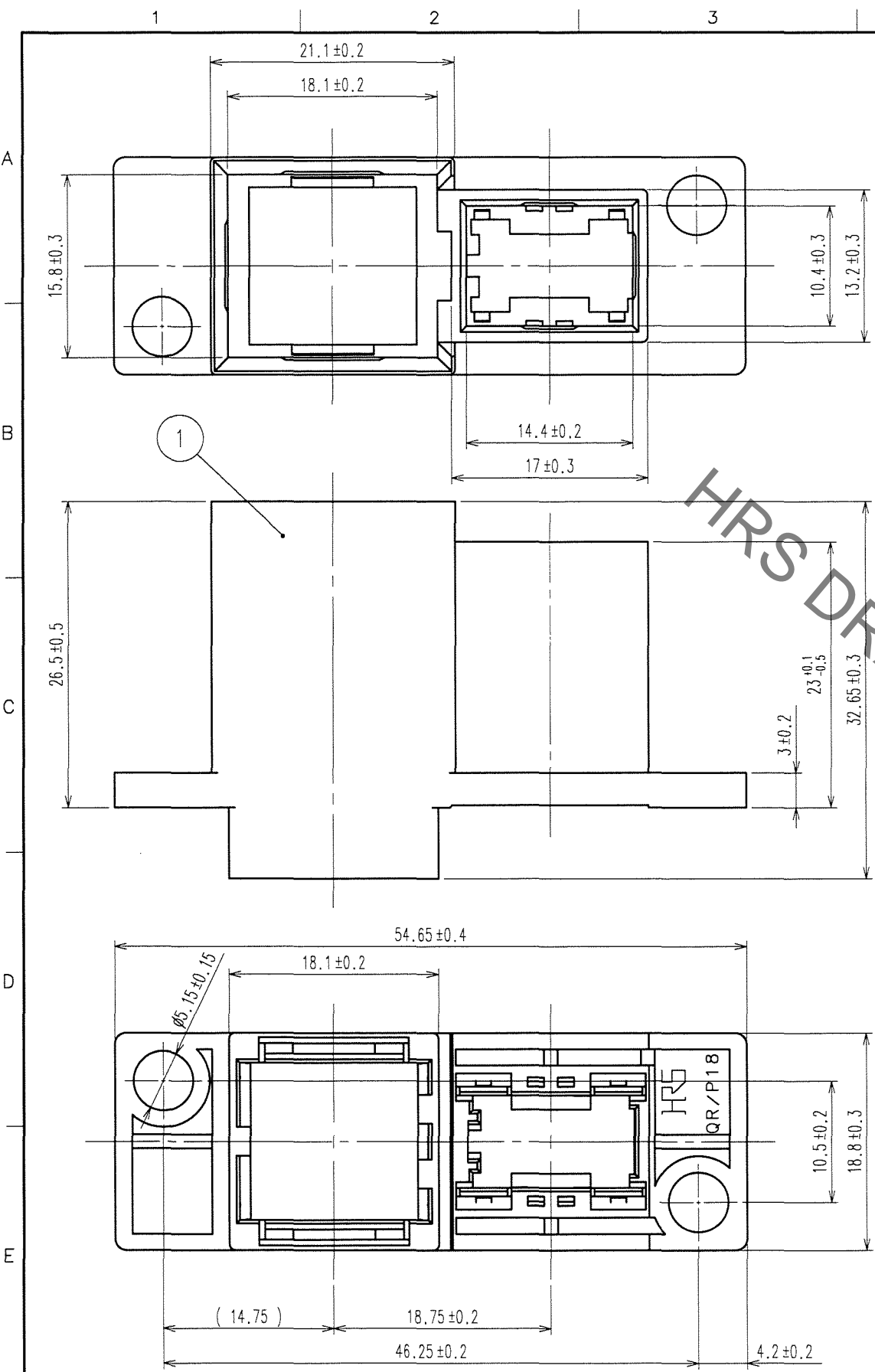


Sep.1.2019 Copyright 2019 HIROSE ELECTRIC CO., LTD. All Rights Reserved.
In case of consideration for using Automotive equipment / device which demand high reliability, kindly contact our sales window correspondents.

COUNT	DESCRIPTION OF REVISIONS	BY	CHKD	DATE	COUNT	DESCRIPTION OF REVISIONS	BY	CHKD	DATE
▲					▲				
▲					▲				
▲					▲				



NO.	MATERIAL	FINISH, REMARKS	NO.	MATERIAL	FINISH, REMARKS
1	PBT	BLACK UL94V-0			

CODE NO. (OLD) CL	DRAWN G. Sato 07.06.08	DESIGNED M. Itano 07.06.08	CHECKED Y. Enami 07.06.08	APPROVED H. Miura 07.06.11	RELEASED
----------------------	------------------------------	----------------------------------	---------------------------------	----------------------------------	----------

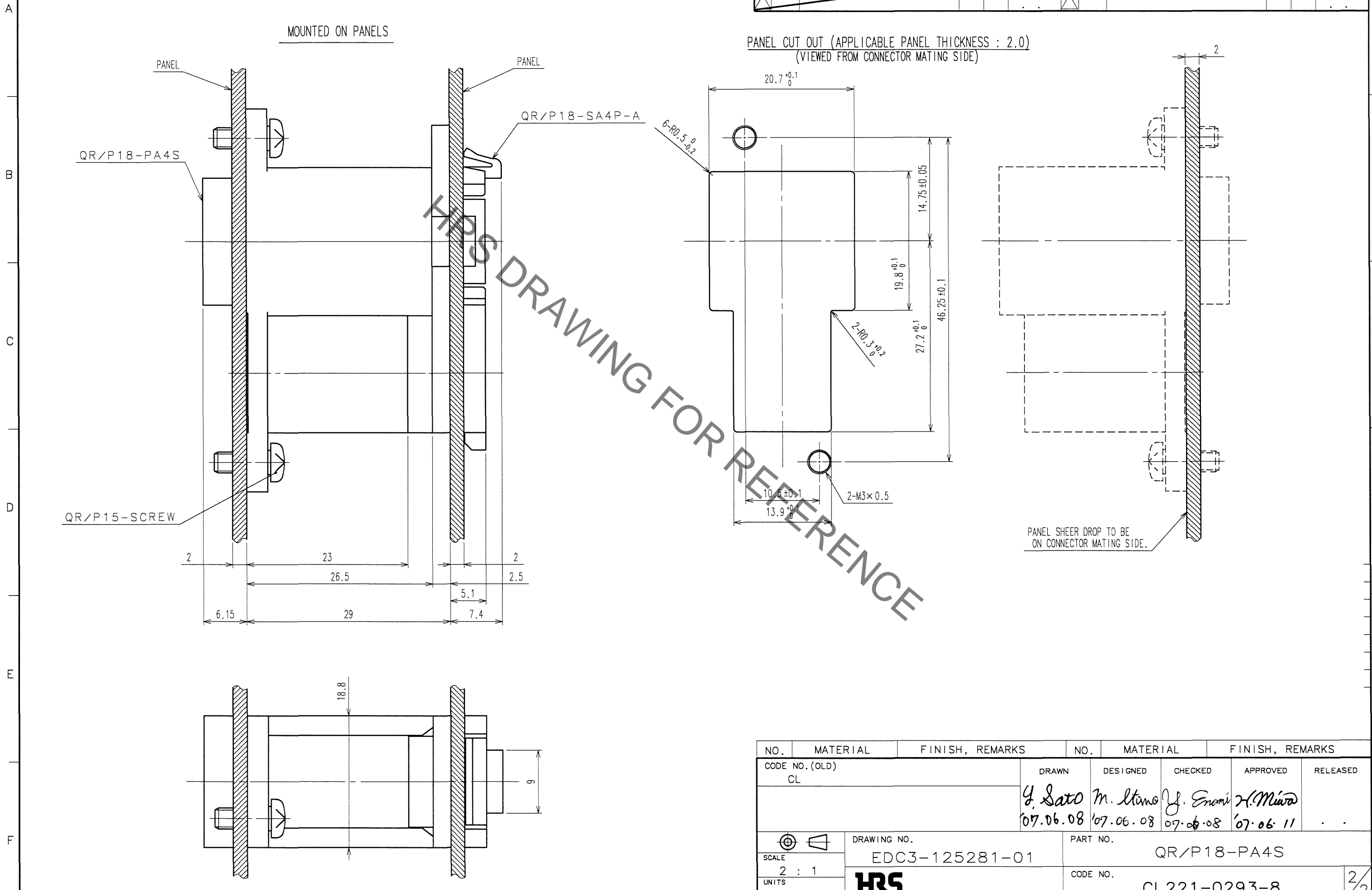
DRAWING NO. EDC3-125281-01	PART NO. QR/P18-PA4S
SCALE 2 : 1	CODE NO. CL221-0293-8
UNITS mm	

NOTES
 1 INSERT CABLE HARNESSED QR/P17-SCA-211(CL221-0262-4) TO QR/P18-4S-C(CL221-0314-6), THEN INSTALL THE QR/P18-4S-C AND HARNESSED QR/P18-12PA CONNECTOR UNIT(CL221-0291-2) TO THIS PRODUCT FOR USE.
 2 APPLY QR/P15-SCREW(CL221-0251-8) FOR PANEL MOUNTING.
 3 THIS PRODUCT FLOATS BY 0.75mm OR MORE FROM THE CENTER.
 4 () INDICATES REFERENCE VALUES.

TO
Q

Sep.1.2019 Copyright 2019 HIROSE ELECTRIC CO., LTD. All Rights Reserved.
In case of consideration for using Automotive equipment / device which demand high reliability, kindly contact our sales window correspondents.

5		6			7			8		
COUNT	DESCRIPTION OF REVISIONS	BY	CHKD	DATE	COUNT	DESCRIPTION OF REVISIONS	BY	CHKD	DATE	
△					△					
△					△					
△					△					



TO
Q

NO.	MATERIAL	FINISH, REMARKS	NO.	MATERIAL	FINISH, REMARKS
CODE NO. (OLD)	CL		DRAWN	DESIGNED	CHECKED
			<i>Y. Sato</i>	<i>M. Itano</i>	<i>J. Enomi</i>
			07.06.08	07.06.08	07.06.08
					<i>H. Miura</i>
					07.06.11
DRAWING NO. EDC3-125281-01			PART NO. QR/P18-PA4S		
SCALE 2 : 1			CODE NO. CL221-0293-8		
UNITS mm			2/2		