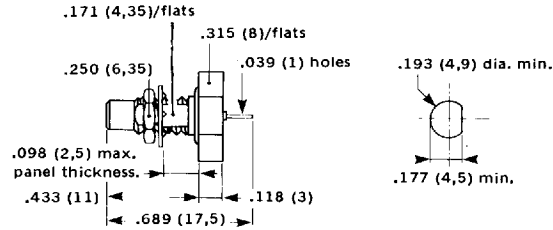
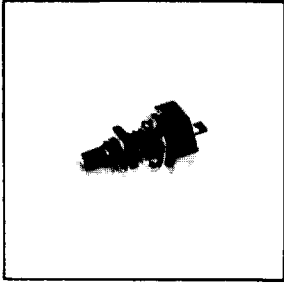


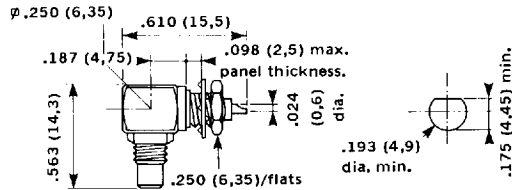
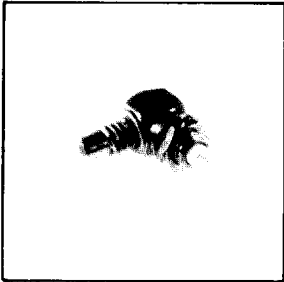
BULKHEAD RECEPTACLES

HERMETICALLY SEALED BULKHEAD RECEPTACLE FRONT NUT FIXING



PART NUMBER	R 112 603
MIL no.	M39012/78-0001

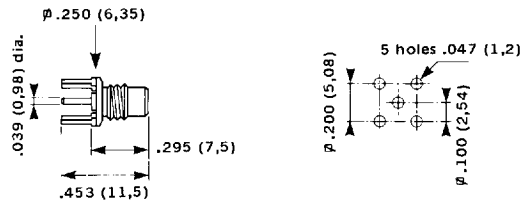
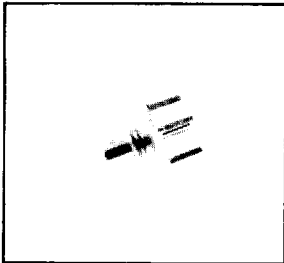
RIGHT ANGLE BULKHEAD RECEPTACLE



PART NUMBER	R 112 670
-------------	-----------

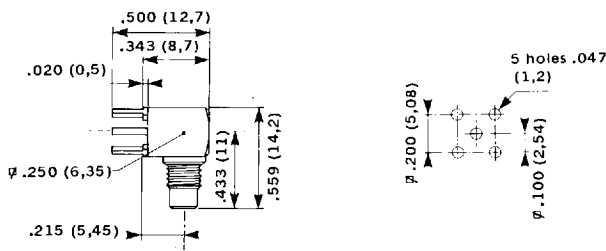
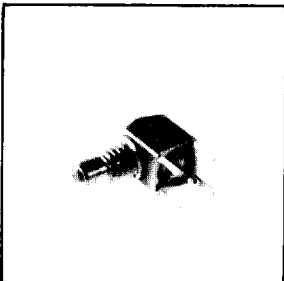
RECEPTACLES FOR PRINTED CIRCUIT BOARD MOUNTING

STRAIGHT PCB RECEPTACLE



PART NUMBER	R 112 426
-------------	-----------

RIGHT ANGLE PCB RECEPTACLE



PART NUMBER	R 112 665
-------------	-----------