

## STRAIGHT FEMALE PANEL RECEPTACLES (captive center contact)

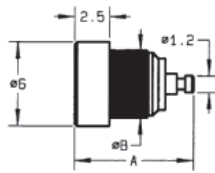
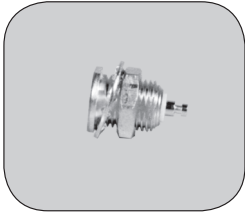


Fig. 1

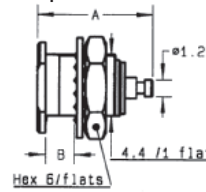
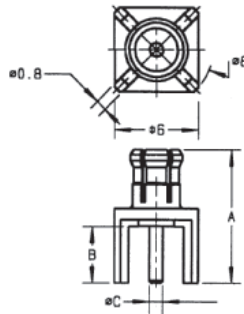


Fig. 2

Part number	Fig.	Imp. ( $\Omega$ )	Dimensions (mm)		Panel drilling	Finish	Note
			A	B			
<b>R113 402 220</b>	1	50	8.7	4.8	P03	BBR	Press-in mount
R113 553 000	2		8.65	2.5	P02	Gold	Recessed front mount

## STRAIGHT MALE PCB RECEPTACLES (captive center contact)



Part number	Imp. ( $\Omega$ )	Dimensions (mm)			Panel drilling	Finish
		A	B	C		
R113 425 000	50	9.65	4.1	0.98	P05	Gold

## STRAIGHT FEMALE PCB RECEPTACLES (captive center contact)

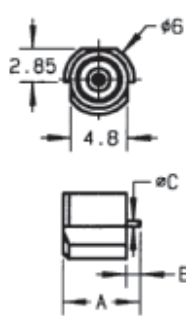


Fig. 1

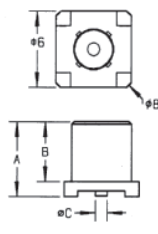


Fig. 2

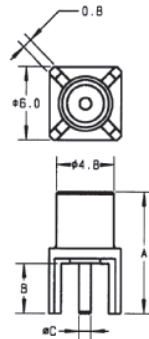


Fig. 3

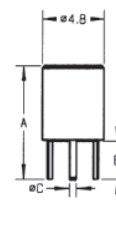


Fig. 4

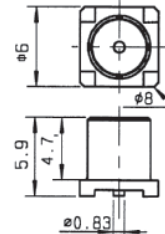


Fig. 5

Part number	Fig.	Imp. ( $\Omega$ )	Dimensions (mm)			Assembly instructions	Panel drilling	Finish	Note	
			A	B	C					
<b>R113 423 000</b>	1	50	6.9	1.4	0.5	M01	Gold	SMT/Edge-card		
<b>R113 424 000</b>	2		5.9	4.7	0.96			SMT		
<b>R113 424 010</b>								SMT/reel 100 pieces		
<b>R113 424 020</b>								SMT/reel 500 pieces		
<b>R113A 424 020</b>								SMT/reel 500 pieces ECO version		
<b>R113 426 000</b>	3		10	4.1	0.98			P05	100 pieces ECO version	
<b>R113A 426 000</b>									BBR	
<b>R113 426 020</b>									BBR	
<b>R113 427 000</b>	4		9	3	0.5			P06	Gold	Space saving on PCB
<b>R213 426 000</b>	3		75	10	4.1			0.71	P05	Gold
<b>R213 424 800</b>	5				M01	Gold	SMT/reel 100 pieces			

To download data sheets and assembly instructions, visit [www.radiall.com](http://www.radiall.com) & enter the part number in the Search box.  
**Bold** part numbers represent products typically in stock & available for immediate shipment.  
 See page 8 and 9 for packaging information.