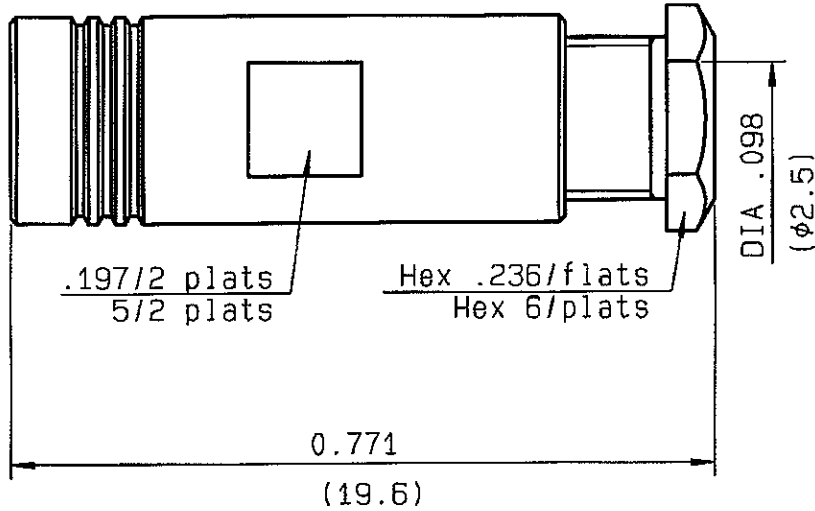


<b>STRAIGHT PLUG CLAMP TYPE CABLE 2/50 D</b>	<b>R114.003.420</b> SERIES SMB
--	-----------------------------------



NOMINAL IMPEDANCE	50 $\Omega$
FREQUENCY RANGE	0-4 GHz
TEMPERATURE RATING	-65/+165 °C
V.S.W.R	1.30 + .04 x F(GHz)Maxi
RF INSERTION LOSS	0.25 $\sqrt{F}$ (GHz) dB Maxi
VOLTAGE RATING	250 Veff Maxi
DIELECTRIC WITHSTANDING VOLTAGE	750 Veff Mini
INSULATION RESISTANCE	1000 M $\Omega$ Mini
HERMETIC SEAL	NA Atm.cm <sup>3</sup> /s
LEAKAGE (pressurized only)	NA
MECHANICAL DURABILITY	500 Cycles
WEIGHT	gr
SPECIFICATION	

CABLES : TS 2619

PACKAGING		
Standard	Unit	Other
100	'W' option	Contact us

OTHERS CHARACTERISTICS

	<b>R-A-S</b>
CABLE RETENTION	<b>58</b> N Mini
CENTER CONTACT RETENTION	
Axial force - mating end	<b>10</b> N Mini
Axial force - opposite end	<b>10</b> N Mini
Torque	<b>NA</b> cm.N Mini
RECOMMENDED TORQUES	
Mating	<b>NA</b> cm.N
Panel nut	<b>NA</b> cm.N
Clamp nut	<b>40</b> cm.N

CONNECTOR PARTS:	MATERIALS	FINISH
		(all values are given in micrometers)
BODY	BRASS	GOLD 0.2 OVER NICKEL 2
OUTER CONTACT	BERYLLIUM COPPER	GOLD 0.5 OVER NICKEL 2
CENTER CONTACT	BERYLLIUM COPPER	GOLD 1.3 OVER NICKEL 2
INSULATOR	PTFE	-
GASKET		-
OTHERS PIECES	BRASS	GOLD 0.2 OVER NICKEL 2

TRIPPIER

ISSUE <b>0701 E</b>	CREATION DATE <b>20/05/1992</b>	FILE PART-NUMBER <b>91-0019-003</b>
------------------------	------------------------------------	--



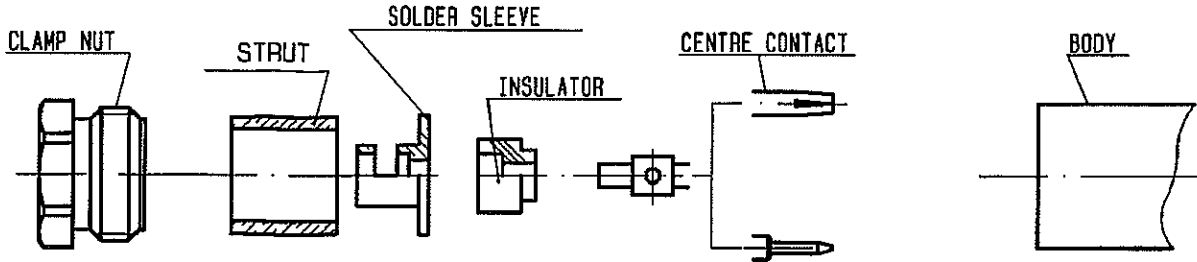
The information given here is subject to change without notice.  
Design changes may be in order to improve the product.

*Connect to the future*



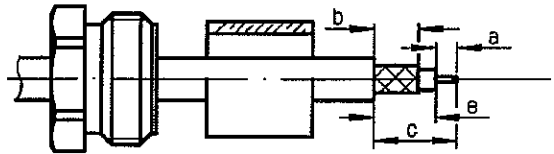
**R114.003.420**

ISSUE 0701 E SERIES SMB



1

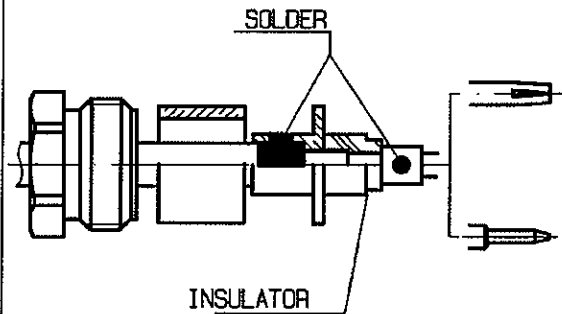
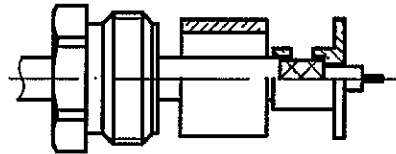
Slide the clamp nut ,the strut onto the cable .  
  
Strip the cable .  
Dip tinned centre conductor of cable .



Stripping	a	b	c	d	e
inch	0.059	0.118	0.307	0	0.248
mm	1.5	3	7.8		6.3

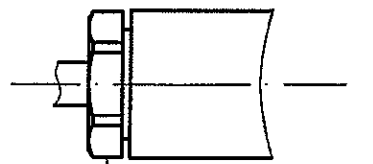
2

Solder the solder sleeve onto the braid .  
Slide the insulator until it bottoms against the solder sleeve .  
-  
Solder the centre contact until it bottoms against insulator .  
-  
-  
-  
-  
-  
-  
-  
-  
-  
-  
-



3

Screw sub-assembly into the connector body .  
( recommended coupling torque 3.53 in.lb )  
Ref. wrench .236/flats : R282 318 000  
Ref. wrench .250/flats : R282 319 010



Hex. : .236/flats

TRIPIER