

STRAIGHT PLUGS CRIMP TYPE FOR FLEXIBLE CABLES

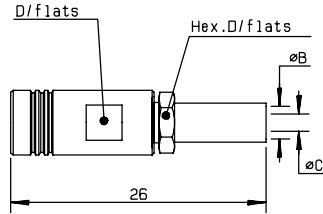


Fig. 1

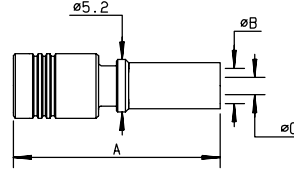


Fig. 2

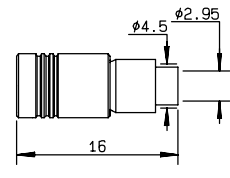


Fig. 3

cable	part number	fig.	dimensions				captive center contact	assembly	finish	note
			A	B	C	D				
2/50/S	R114 073 000	1		2.55	0.95	5	yes	M03	Gold	
2/50/S	R114 073 134*●	1		2.55	0.95	5.5	yes	M03	Gold	
2/50/S	R114 081 020*●	2	20.4	3.25	0.95		yes	M10	Nickel	full crimp
2.6/50/S	R114 015 000	3					yes	M11	Gold	reverse crimping/full crimp
2.6/50+75/S	R114 075 000	1		3.25	1.7	5	yes	M03	Gold	
2.6/50+75/S	R114 075 134	1		3.25	1.7	5.5	yes	M03	Gold	
2.6/50+75/S	R114 082 000	2	19.8	3.25	1.7		yes	M10	Gold	full crimp
2.6/50+75/S	R114 082 020	2	19.8	3.25	1.7		yes	M10	Nickel	full crimp
2.6/50/D	R114 083 000	2	18.8	3.25	1.7		yes	M10	Gold	full crimp
2.6/50/D	R114 083 020	2	18.8	3.25	1.7		yes	M10	Nickel	full crimp

STRAIGHT PLUGS CLAMP TYPE FOR FLEXIBLE CABLES

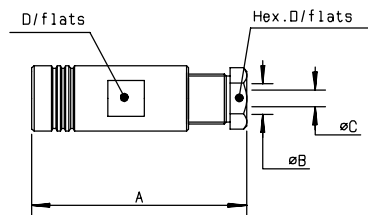


Fig. 1

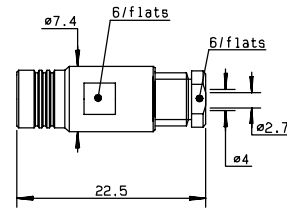


Fig. 2

cable	part number	fig.	dimensions				captive center contact	assembly	finish	note
			A	B	C	D				
2/50/S	R114 003 000	1	21.8	2.2	0.95	5	yes	M02	Gold	
2/50/S	R114 003 020*●	1	17	2.2	0.95	5.5	yes	M01	Nickel	conical braid clamp
2/50/S	R114 003 133	1	17	2.2	0.95	5.5	yes	M01	Gold	conical braid clamp
2.6/50+75/S	R114 005 000	1	21.8	3	1.7	5	yes	M02	Gold	
2.6/50+75/S	R114 005 133	1	17	3	1.7	5.5	yes	M01	Gold	conical braid clamp
3.8/95/S	R114 009 000*●	2					yes	M02	Gold	RG180 cable

● upon request

* packaging: unit