

STRAIGHT PCB RECEPTACLES

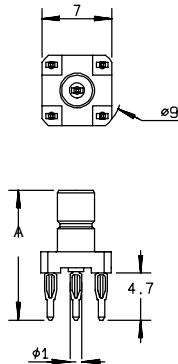


Fig. 1

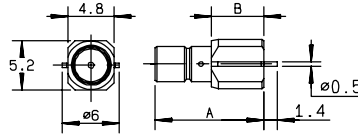


Fig. 2

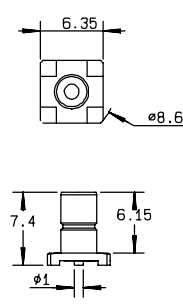


Fig. 3

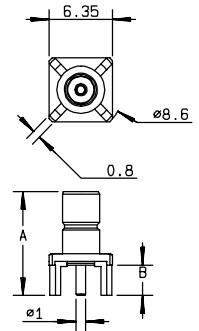


Fig. 4

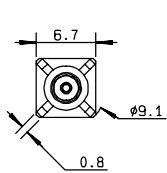


Fig. 5

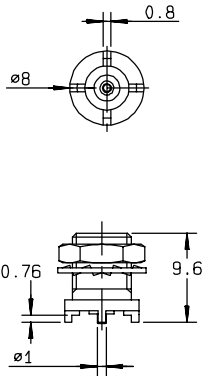


Fig. 6

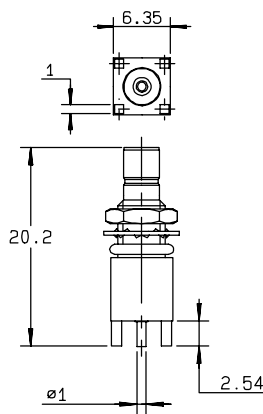


Fig. 7

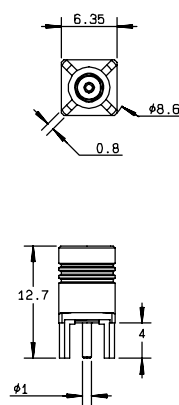


Fig. 8

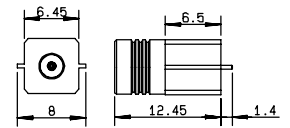


Fig. 9

part number	fig.	dimensions		captive center contact	assembly	panel	finish	note
		A	B					
R114 416 000●	1	12.1		yes	M16	P02	Gold	press fit pins
R114 416 020	1	12.9		yes	M16	P02	Nickel	press fit pins
R114 423 000	2	11.5	5.5	yes	M12		Gold	SMT edge card
R114 423 800●	2	12.5	6.5	yes	M12		Gold	SMT edge card / packaging 1000 reel
R114 423 810	2	11.5	5.5	yes	M12		Gold	SMT edge card / packaging 500 reel
R114 423 820	2	11.5	5.5	yes	M12		Gold	SMT edge card / packaging 100 reel
R114 424 000	3			yes	M12		Gold	SMT
R114 424 100	3			yes	M12		Gold	SMT / packaging 100 reel
R114 424 120	3			yes	M12		Gold	SMT / packaging 500 reel
R114 426 000	4	11.4	4	yes		P03	Gold	
R114 426 020	4	11.4	4	yes		P03	Nickel	
R114 426 030	4	11.4	4	yes		P03	Ni+Tin-lead	
R114 426 042	4	10.3	2.9	yes		P03	Nickel	
R114 426 300*●	4	11.4	4	yes		P04	Gold	thin legs
R114 426 530	5			yes		P05	Gold	harpon legs
R114 426 850●	4	11.4	4	yes		P03	Gold	packaging 75 tube
R114 560 200*●	6			yes		P06	Gold	rear mount
R114 590 035*●	7			yes		P03	nickel	rear mount / panel seal
R114 425 000*●	8			yes		P06	Gold	female
R114 425 003●	8			yes		P06	Gold	female
R114 444 800●	9			yes	M12		Gold	female/SMT edge card/packaging 800 reel

● upon request

* packaging: unit



RIGHT ANGLE PCB RECEPTACLES (MALE CENTER CONTACT)

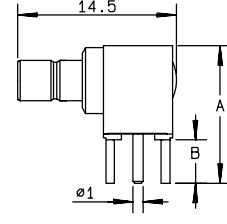
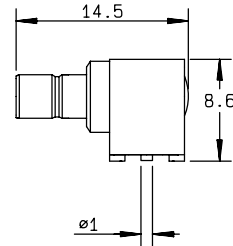
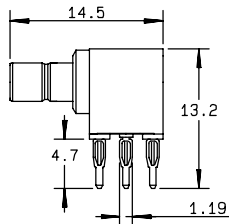
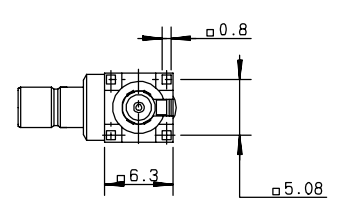
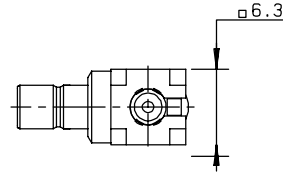
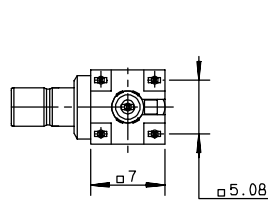


Fig. 1

Fig. 2

Fig. 3

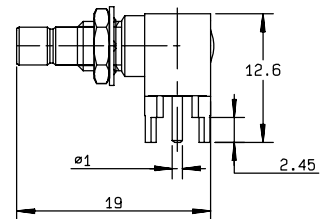
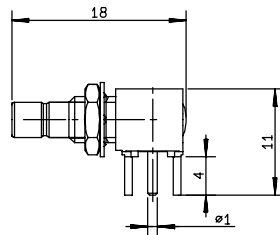
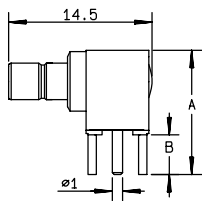
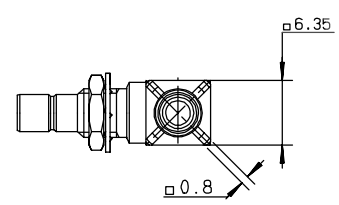
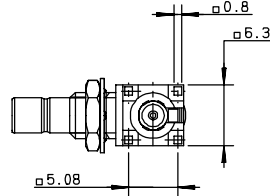
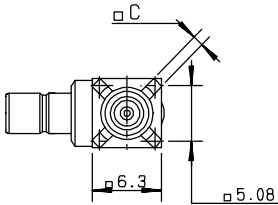


Fig. 4

Fig. 5

Fig. 6

part number	fig.	dimensions			captive center contact	assembly	panel	finish	note
		A	B	C					
R114 661 020	1				yes	M15	P02	Nickel	Press fit pins
R114 664 000	2				yes	M12		Gold	SMT
R114 664 100	2				yes	M12		Gold	SMT / packaging 100 reel
R114 664 120	2				yes	M12		Gold	SMT / packaging 500 reel
R114 665 000	3	12.6	4		yes		P03	Gold	
R114 665 020	3	12.6	4		yes		P03	Nickel	
R114 665 040*●	4	12.6	2.45	0.8	yes		P03	Gold	
R114 665 104	3	11.6	3		yes		P03	Ni+tin lead	
R114 665 110	3	11.6	3		yes		P03	Nickel	
R114 673 020*●	5				yes		P03	Nickel	rear mount
R114 673 120*●	6				yes		P03	Gold	rear mount

● upon request

* packaging: unit