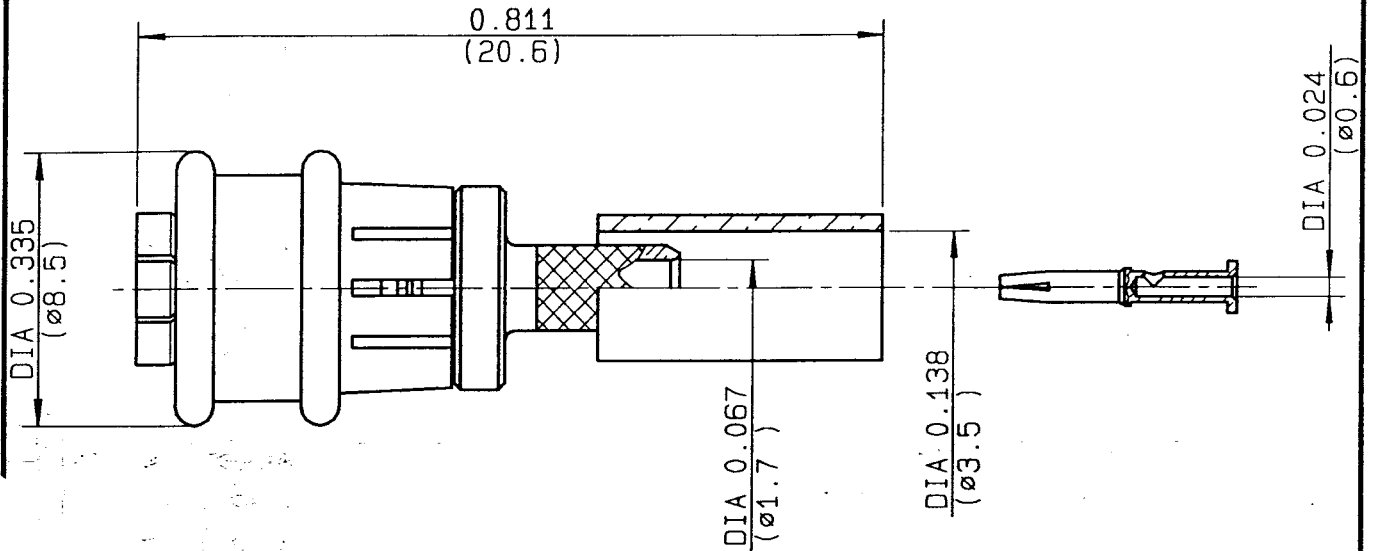


**STRAIGHT PLUG FULL CRIMP TYPE
CABLE 2.6/50 D-BR**

R117.083.807
SERIES **SMB-LOCK**



| | | |
|---------------------------------|------------------------------|----------------------------|
| NOMINAL IMPEDANCE | 50 Ω | CABLES : K022520 |
| FREQUENCY RANGE | 0-4 GHz | RD 316 |
| TEMPERATURE RATING | -35/+125 °C | |
| V.S.W.R | 1.25 + .04 x F(GHz)Maxi | |
| RF INSERTION LOSS | .25 \sqrt{F} (GHz) dB Maxi | |
| VOLTAGE RATING | 335 Veff Maxi | |
| DIELECTRIC WITHSTANDING VOLTAGE | 1000 Veff Mini | |
| INSULATION RESISTANCE | 1000 M Ω Mini | OTHERS CHARACTERISTICS |
| HERMETIC SEAL | NA Atm.cm ³ /s | CABLE RETENTION |
| LEAKAGE (pressurized only) | NA | 110 N Mini |
| MECHANICAL DURABILITY | 500 Cycles | CENTER CONTACT RETENTION |
| WEIGHT | 1.9 gr | Axial force - mating end |
| SPECIFICATION | | 10 N Mini |
| | | Axial force - opposite end |
| | | NA N Mini |
| | | Torque |
| | | NA cm.N Mini |
| | | RECOMMENDED TORQUES |
| | | Mating |
| | | NA cm.N |
| | | Panel nut |
| | | NA cm.N |
| | | Clamp nut |
| | | NA cm.N |

| CONNECTOR PARTS | MATERIALS | FINISH | (all values are given) in micrometers |
|-----------------|------------------|--------------------------|---|
| BODY | BRASS | BBR 2 | |
| OUTER CONTACT | BRONZE | BBR 2 | |
| CENTER CONTACT | BERYLLIUM COPPER | GOLD 0.8 OVER COPPER 0.5 | |
| INSULATOR | PTFE | - | |
| GASKET | - | - | |
| OTHERS PIECES | DELFIN (POM) | - | |

| | | |
|---------|---------------|------------------|
| ISSUE | CREATION DATE | FILE PART-NUMBER |
| 9820A02 | 08-DEC-97 | EPC 97-08 |



GUERIN

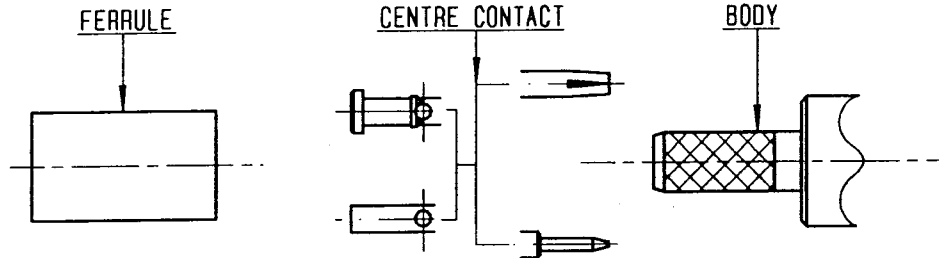
The information given here is subject to change without notice.
Design changes may be in order to improve the product .

Connect to the future

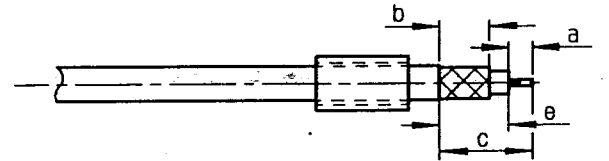


R117.083.807

ISSUE 9820A02 SERIES SMB-LOCK

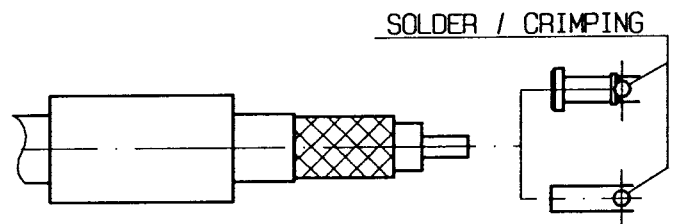


- ① Slide onto the cable the ferrule
- Strip the cable .
-
-

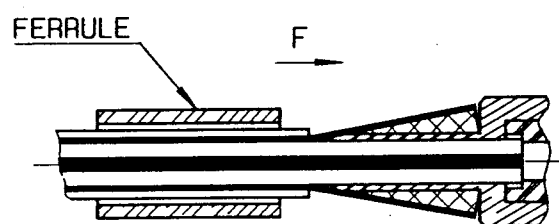


| Stripping | a | b | c | d | e |
|-----------|-------|-------|-------|---|-------|
| inch | 0.098 | 0.213 | 0.453 | 0 | 0.354 |
| mm | 2.5 | 5.4 | 11.5 | | 9 |

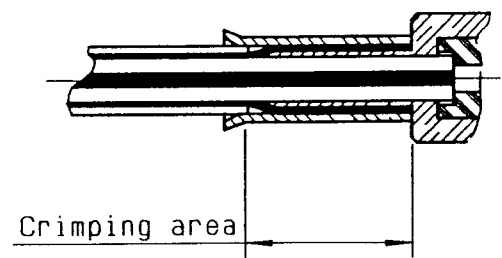
- ② Slide on centre contact until it bottoms against cable dielectrique .
Solder or crimp centre contact .
CABLE 2.6/50:
Crimping tool : R282 281 000 (position 3)
+ positionner R282 983 000 or
crimping tool M22520/2-01 (position 3)
CABLE 2.6/75:
Crimping tool : R282 281 000 (position 1)
+ positionner R282 983 000 or
crimping tool M22520/2-01 (position 1)



- ③ Fan the braid .
Slide cable into the body until bottoms against insulator .
Slide ferrule over the braid .
(In direction F)



- ④ Crimp the ferrule with crimping tool R 282 271 000 (Hex. : .151) or crimping tool R282 293 000 (M22520/5-01) + dies R282 235 037 (M22520/5-37)
Cut the excess of braid .
-
-
-
-



GUERIN