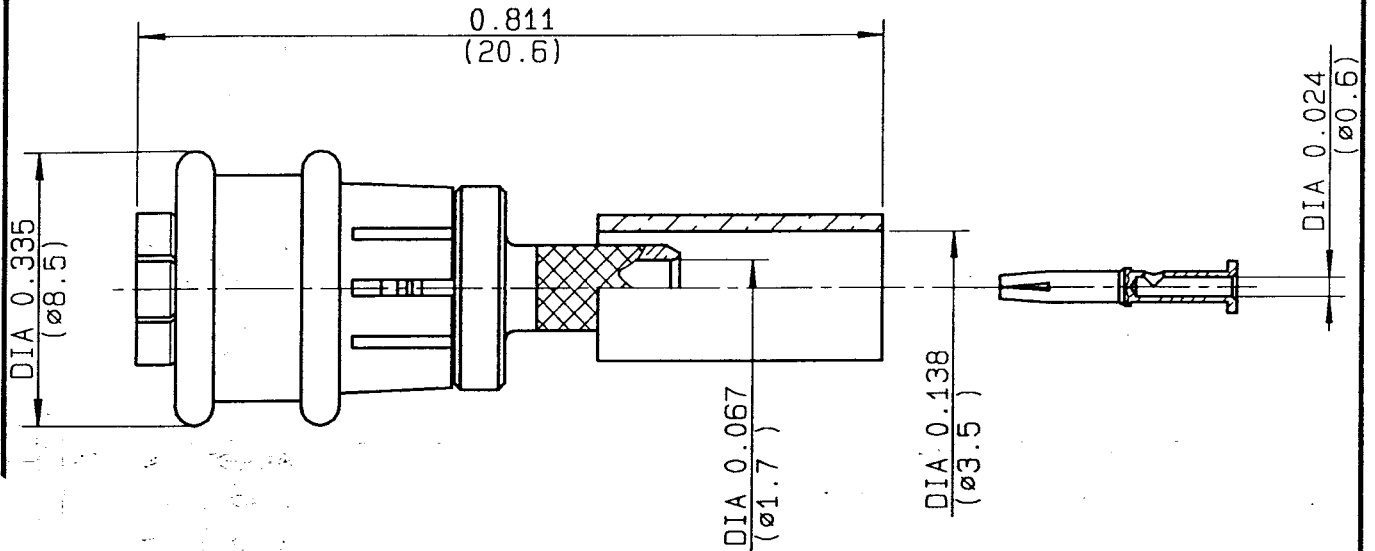


**STRAIGHT PLUG FULL CRIMP TYPE
CABLE 2.6/50 D-BR**

R117.083.807
SERIES **SMB-LOCK**



NOMINAL IMPEDANCE	50 Ω	CABLES : K022520
FREQUENCY RANGE	0-4 GHz	RD 316
TEMPERATURE RATING	-35/+125 °C	
V.S.W.R	1.25 + .04 x F(GHz)Maxi	
RF INSERTION LOSS	.25 √F(GHz) dB Maxi	
VOLTAGE RATING	335 Veff Maxi	
DIELECTRIC WITHSTANDING VOLTAGE	1000 Veff Mini	
INSULATION RESISTANCE	1000 MΩMini	OTHERS CHARACTERISTICS
HERMETIC SEAL	NA Atm.cm ³ /s	CABLE RETENTION
LEAKAGE (pressurized only)	NA	110 N Mini
MECHANICAL DURABILITY	500 Cycles	CENTER CONTACT RETENTION
WEIGHT	1.9 gr	Axial force - mating end
SPECIFICATION		10 N Mini
		Axial force - opposite end
		NA N Mini
		Torque
		NA cm.N Mini
		RECOMMENDED TORQUES
		Mating
		NA cm.N
		Panel nut
		NA cm.N
		Clamp nut
		NA cm.N

CONNECTOR PARTS	MATERIALS	FINISH	(all values are given) in micrometers
BODY	BRASS	BBR 2	
OUTER CONTACT	BRONZE	BBR 2	
CENTER CONTACT	BERYLLIUM COPPER	GOLD 0.8 OVER COPPER 0.5	
INSULATOR	PTFE	-	
GASKET	-	-	
OTHERS PIECES	DELFIN (POM)	-	

ISSUE	CREATION DATE	FILE PART-NUMBER
9820A02	08-DEC-97	EPC 97-08



GUERIN

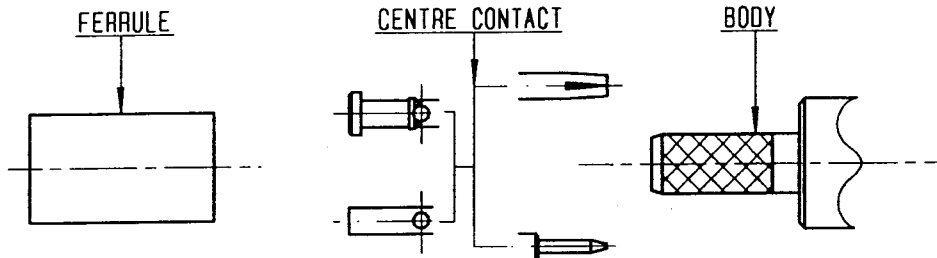
The information given here is subject to change without notice.
Design changes may be in order to improve the product.

Connect to the future



R117.083.807

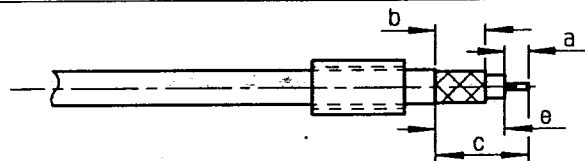
ISSUE 9820A02 SERIES SMB-LOCK



①

Slide onto the cable the ferrule

Strip the cable .



Stripping	a	b	c	d	e
inch	0.098	0.213	0.453	0	0.354
mm	2.5	5.4	11.5		9

②

Slide on centre contact until it bottoms against cable dielectrique .
Solder or crimp centre contact .

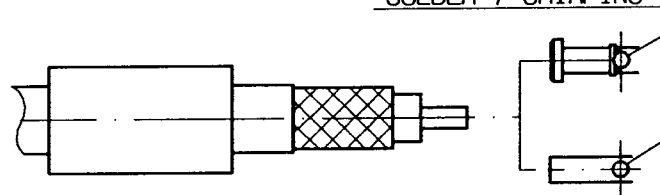
CABLE 2.6/50:

Crimping tool : R282 281 000 (position 3)
+ positionner R282 983 000 or
crimping tool M22520/2-01 (position 3)

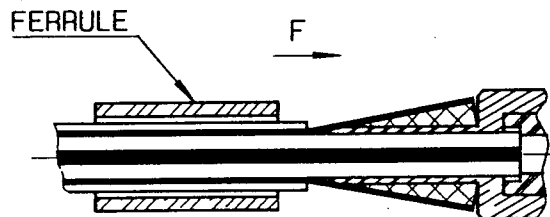
CABLE 2.6/75:

Crimping tool : R282 281 000 (position 1)
+ positionner R282 983 000 or
crimping tool M22520/2-01 (position 1)

SOLDER / CRIMPING



Fan the braid .
Slide cable into the body until bottoms against insulator .
Slide ferrule over the braid .
(In direction F)



④

Crimp the ferrule with crimping tool R 282 271 000 (Hex. : .151) or crimping tool R282 293 000 (M22520/5-01) + dies R282 235 037 (M22520/5-37)
Cut the excess of braid .

