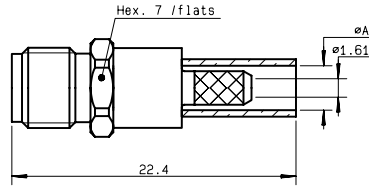
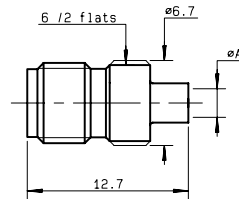


### STRAIGHT JACK, FULL CRIMP TYPE, FOR FLEXIBLE CABLE



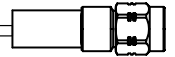
cable group	part number	A	mounting	finish	note
2.6/ 50 / S	<b>R124 236 120</b>	3,25	M 01	BBR	3 piece SMA
2.6/ 50 / S	<b>R124 236 123</b>	3,25	M 01	Gold	
2.6/ 50 / D	<b>R124 233 120</b>	3,5	M 01	BBR	
2.6/ 50 / D	<b>R124 233 123</b>	3,5	M 01	Gold	

### STRAIGHT JACK, SOLDER TYPE, FOR SEMI-RIGID CABLE



cable group	part number	A	mounting	finish	note
.085	<b>R124 222 000</b>	2,25	M 04	BBR	Non captivated center contact
.085	<b>R124 222 003</b>	2,25	M 04	Gold	
.141	<b>R124 225 000</b>	3,65	M 04	BBR	
.141	<b>R124 225 003</b>	3,65	M 04	Gold	

Standard packaging : 100 pieces



## BULKHEAD FEEDTHROUGH STRAIGHT JACK, FULL CRIMP TYPE, FOR FLEXIBLE CABLE

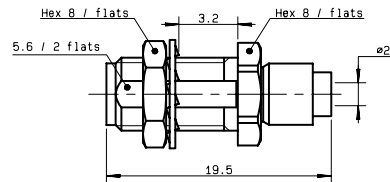
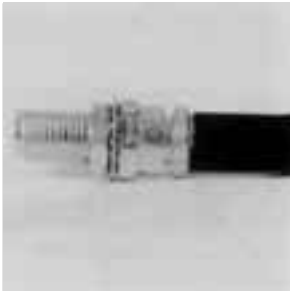


Fig. 1

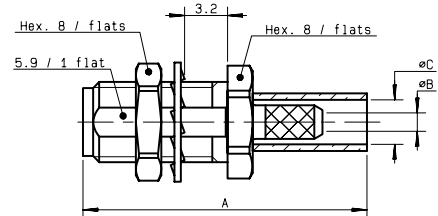
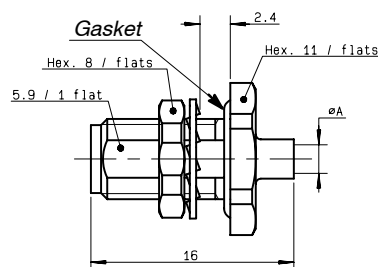


Fig. 2

cable group	part number	fig.	A	B	C	mounting	panel drilling	finish	note
2 / 50 / S	<b>R124 310 020</b>	1				M 03	P 08	BBR	Reverse crimping / Solder contact
2 / 50 / S	<b>R124 310 023</b>	1				M 03	P 08	Gold	
2.6/ 50 / S	<b>R124 312 120</b>	2	22,4	1,61	3,25	M 01	P 01	BBR	3 piece SMA
2.6/ 50 / S	<b>R124 312 123</b>	2	22,4	1,61	3,25	M 01	P 01	Gold	
2.6/ 50 / D	<b>R124 313 120</b>	2	22,4	1,61	3,5	M 01	P 01	BBR	
2.6/ 50 / D	<b>R124 313 123</b>	2	22,4	1,61	3,5	M 01	P 01	Gold	
5 / 50 / S	<b>R124 314 120</b>	2	25,4	3,11	5,41	M 01	P 01	BBR	3 piece SMA
5 / 50 / S	<b>R124 314 123</b>	2	25,4	3,11	5,41	M 01	P 01	Gold	
5 / 50 / D	<b>R124 315 120</b>	2	25,4	3,11	5,8	M 01	P 01	BBR	
5 / 50 / D	<b>R124 315 123</b>	2	25,4	3,11	5,8	M 01	P 01	Gold	

## BULKHEAD FEEDTHROUGH STRAIGHT JACK, SOLDER TYPE, FOR SEMI-RIGID CABLE (PANEL SEAL)



cable group	part number	A	mounting	panel drilling	finish	note
.085	<b>R124 326 000</b>	2,25	M 04	P 01	BBR	Non captivated center contact
.085	<b>R124 326 003</b>	2,25	M 04	P 01	Gold	
.141	<b>R124 325 000</b>	3,65	M 04	P 01	BBR	
.141	<b>R124 325 003</b>	3,65	M 04	P 01	Gold	

Standard packaging : 100 pieces