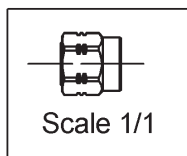
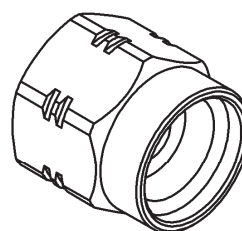
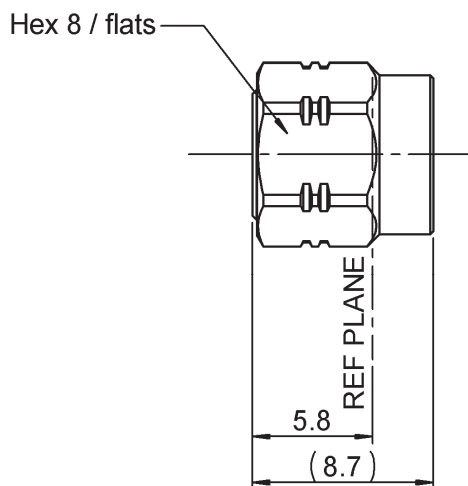


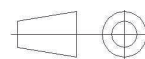
PROTECTION MALE CAP

R124.802.108

Series : SMA-COM



All dimensions are in mm.



COMPONENTS	MATERIALS	PLATING (µm)
BODY	BRASS	TIN OVER NICKEL
CENTER CONTACT		
OUTER CONTACT		
INSULATOR		
GASKET	SILICONE RUBBER	
OTHERS PARTS	BRASS	TIN OVER NICKEL
-	-	-
-	-	-

Issue : 1151 A

In the effort to improve our products, we reserve the right to make changes judged to be necessary.



PROTECTION MALE CAP

R124.802.108

Series : SMA-COM

PACKAGING

Standard	Unit	Other
100	-	Contact us

SPECIFICATION

ELECTRICAL CHARACTERISTICS

Impedance	NA	Ω
Frequency	NA	GHz
VSWR	NA + 0.0000	x F(GHz) Maxi
Insertion loss	NA	\sqrt{F} (GHz) dB Maxi
RF leakage	- (NA	- F(GHz)) dB Maxi
Voltage rating	NA	Veff Maxi
Dielectric withstanding voltage	NA	Veff mini
Insulation resistance	NA	M Ω mini

ENVIRONMENTAL

Operating temperature	-65/+165	$^{\circ}$ C
Hermetic seal	NA	Atm.cm3/s
Panel leakage	NA	

OTHER CHARACTERISTICS

Assembly instruction

Others :

MECHANICAL CHARACTERISTICS

Center contact retention		
Axial force – Mating end	NA	N mini
Axial force – Opposite end	NA	N mini
Torque	NA	N.cm mini
Recommended torque		
Mating	NA	N.cm
Panel nut	NA	N.cm
Mating life	500	Cycles mini
Weight	2.4000	g

Issue : 1151 A

In the effort to improve our products, we reserve the right to make changes judged to be necessary.

