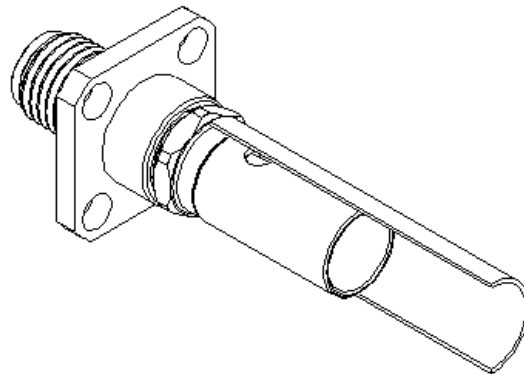
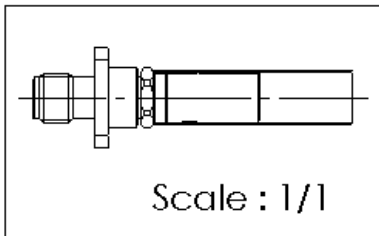
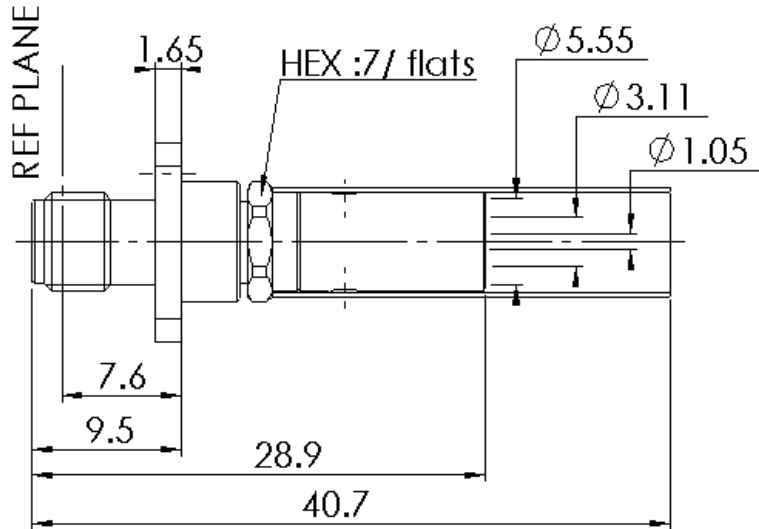
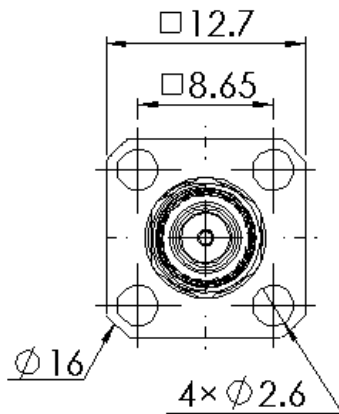


STRAIGHT BULKHEAD JACK

R125.278.000

CRIMP AND SOLDER TYPE - CABLE 5/50 D

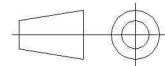
Series : SMA



PANEL CUT OUT

	mm	
	Maxi	mini
A	6.6	6.5
B	2.7	2.6
C	8.69	8.59

All dimensions are in mm.



COMPONENTS	MATERIALS	PLATINGS (µm)
BODY	STAINLESS STEEL	GOLD 0.5 OVER NICKEL 2
CENTER CONTACT	BERYLLIUM COPPER	GOLD 1.5 OVER NICKEL 2
OUTER CONTACT	-	-
INSULATOR	PTFE	-
GASKET	-	-
OTHERS PARTS	BRASS	GOLD 0.2 OVER NICKEL 2
-	-	-
-	-	-

Issue : 1342 J

In the effort to improve our products, we reserve the right to make changes judged to be necessary.



STRAIGHT BULKHEAD JACK

R125.278.000

CRIMP AND SOLDER TYPE - CABLE 5/50 D

Series : SMA

PACKAGING

Standard	Unit	Other
100	'W' option	Contact us

SPECIFICATION

CABLE ASSEMBLY

Stripping	a	b	c	d	e	f
mm	2,85	7,00	18,0	0,00	15,1	0,00

ELECTRICAL CHARACTERISTICS

Assembly instruction :

Recommended cable(s)
 KX 23
 RG 142 FTX
 RG 142
 RG 400
 RG 223

Impedance		50	Ω
Frequency		0-12.4	GHz
VSWR	1.15 +	0,0100	x F(GHz) Maxi
Insertion loss		0.06	\sqrt{F} (GHz) dB Maxi
RF leakage	- (60	- F(GHz)) dB Maxi
Voltage rating		335	Veff Maxi
Dielectric withstanding voltage		1000	Veff mini
Insulation resistance		5000	M Ω mini

Cable retention

- pull off	204	N mini
- torque	NA	N.cm

MECHANICAL CHARACTERISTICS

TOOLING

Part Number	Description	Hexagon
R282223000	CRIMPING TOOL	5.40
R282293000	CRIMPING TOOL M22520/5-01	-
R282235011	CRIMPING DIES M22520/5-11	5.40

Center contact retention			
Axial force – Mating end	27	N mini	
Axial force – Opposite end	NA	N mini	
Torque	NA	N.cm mini	

Recommended torque			
Mating	NA	N.cm	
Panel nut	NA	N.cm	
Clamp nut	100	N.cm	
A/F clamp nut	7,0000	mm	

Mating life	500	Cycles mini
Weight	5,8000	g

OTHERS CHARACTERISTICS

ENVIRONMENTAL

Operating temperature	-65/+165	$^{\circ}$ C
Hermetic seal	NA	Atm.cm3/s
Panel leakage	NA	

Issue : 1342 J

In the effort to improve our products, we reserve the right to make changes judged to be necessary.



RADIALL®