

SMA

PANEL MOUNT RECEPTACLES

For component and system panels, cavities, waveguide and strip transmission lines, there are an infinite number of mounting and contact termination treatments possible.

Stock availability exists for more styles.

Flange mount, front panel, and through panel attachment styles are available in a number of sizes.

Most SMA receptacle connectors are supplied with captured center contact.

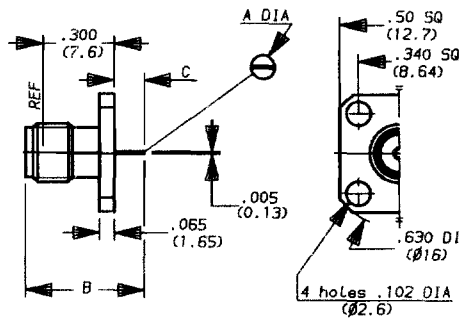
SMA right angle connectors utilize laser welding for contact attachment.

Where launching directly to stripline circuits is required, the SMA stripline series is the optimum choice.

PANEL MOUNT RECEPTACLES WITH TAB TERMINAL

Square flange mount jack receptacle

PART NUMBER	R 125 510 001	R 125 620 001
Captive contact	YES	YES
A DIA.	.050 (1.27)	.024 (0.6)
B DIM.	.472 (12)	.409 (10.4)
C DIM.	.100 (2.54)	.035 (0.9)

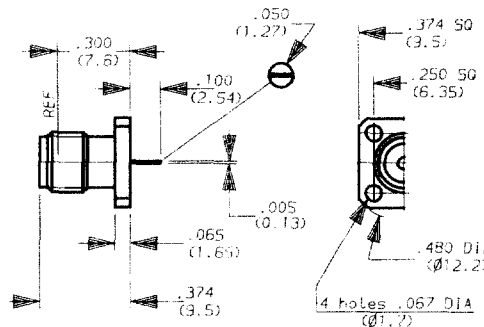


See footnote 1.

Square flange mount jack receptacle

PART NUMBER	R 125 510 501*
Captive contact	YES

*Manufactured upon request

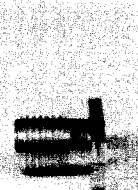
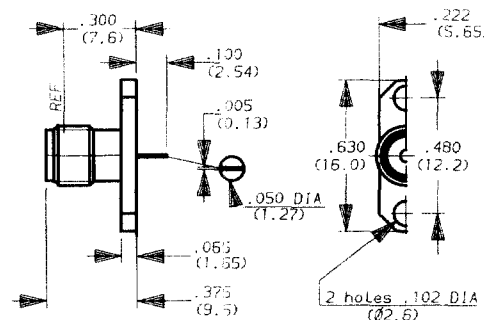


See footnote 1

Narrow flange mount jack receptacle

PART NUMBER	R 125 497 001*
Captive contact	YES

*Manufactured upon request



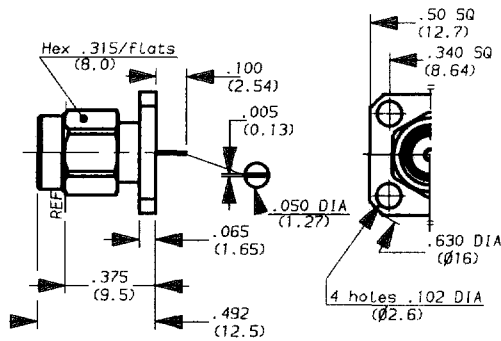
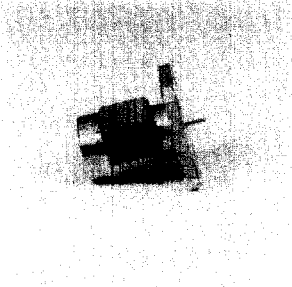
See footnote 1

1) The standard units have passivated stainless steel finish. For gold plated version, change the last digit from 1 to 0 : Ex R 125 510

SMA

PANEL MOUNT RECEPTACLES WITH TAB TERMINAL

Square flange mount plug receptacle

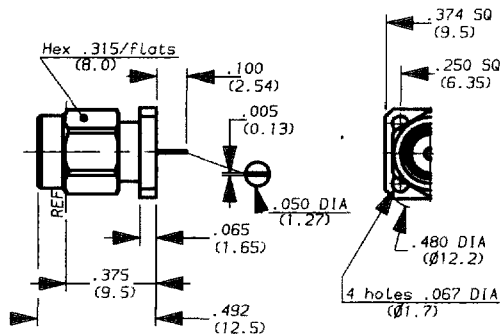
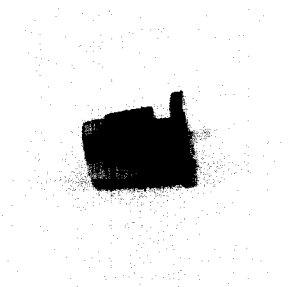


PART NUMBER	R 125 488 001*
Captive contact	YES

*Manufactured upon request

See footnote 1

Square flange mount plug receptacle

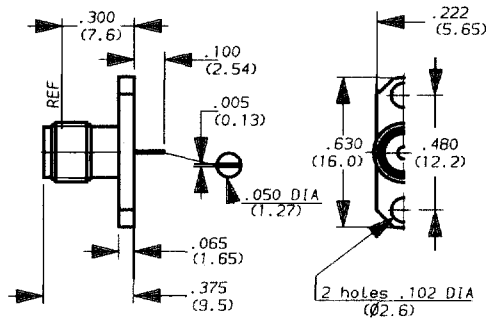
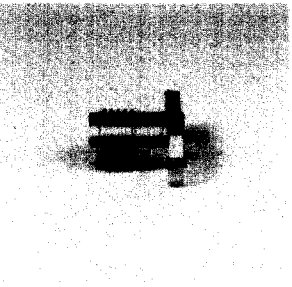


PART NUMBER	R 125 488 501*
Captive contact	YES

*Manufactured upon request

See footnote 2

Narrow flange mount jack receptacle

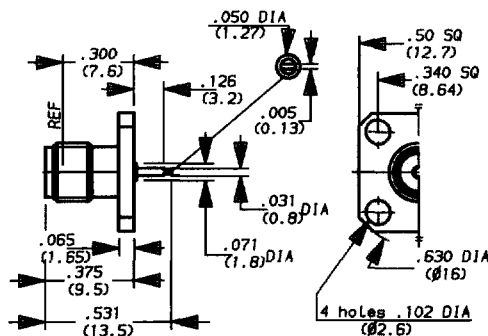
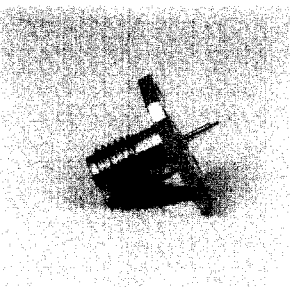


PART NUMBER	R 125 504 001*
Captive contact	NO

*Manufactured upon request

See footnote 1

Square flange mount jack receptacle



PART NUMBER	R 125 499 001
Captive contact	YES

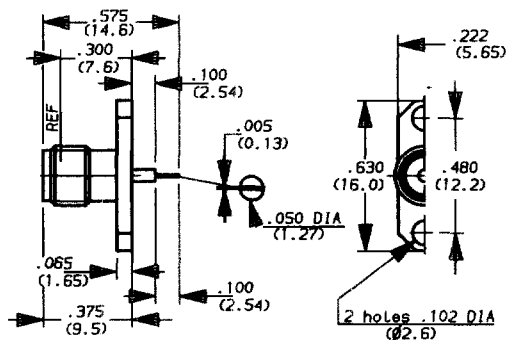
See footnote 1

1) The standard units have passivated stainless steel finish. For gold plated version, change the last digit from 1 to 0 : Ex R 125 488
 2) Finish : passivated

PANEL MOUNT RECEPTACLES WITH TAB TERMINAL

Narrow flange mount jack receptacle

PART NUMBER	R 125 503 001
Captive contact	NO

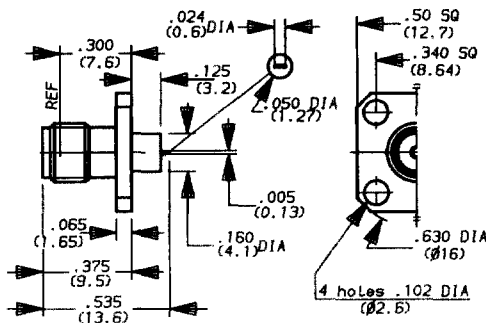


See footnote 1

Square flange mount jack receptacle

PART NUMBER	R 125 622 001*
Captive contact	YES
Installation	M 17 page 78

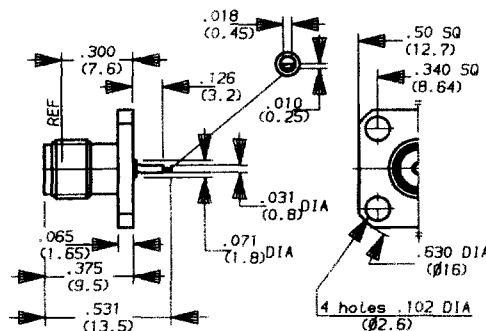
*Manufactured upon request



See footnote 1

Square flange mount jack receptacle

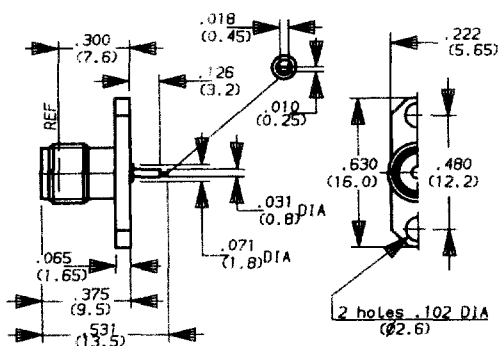
PART NUMBER	R 125 501 001
Captive contact	YES
Installation	M 12 page 77



See footnote 1

Narrow flange mount jack receptacle

PART NUMBER	R 125 451 001
Captive contact	YES
Installation	M 12 page 77



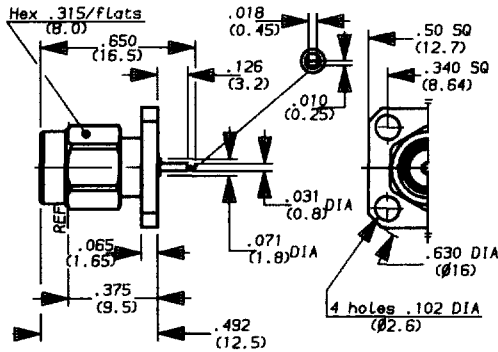
See footnote 1

1) The standard units have passivated stainless steel finish. For gold plated version, change the last digit from 1 to 0 : Ex R 125 503

SMA

PANEL MOUNT RECEPTACLES WITH TAB TERMINAL

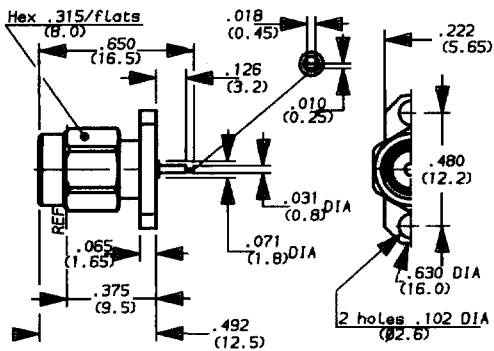
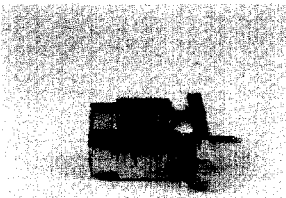
Square flange mount plug receptacle



PART NUMBER	R 125 500 001*
Captive contact	YES
Installation	M 12 page 77
• Manufactured upon request	

See footnote 1

Narrow flange mount plug receptacle

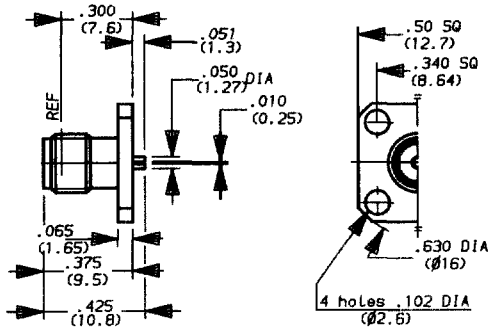
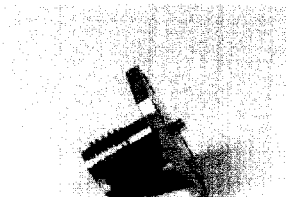


PART NUMBER	R 125 472 001*
Captive contact	YES
Installation	M 12 page 77
• Manufactured upon request	

See footnote 1

PANEL MOUNT RECEPTACLES WITH SLOT TERMINAL

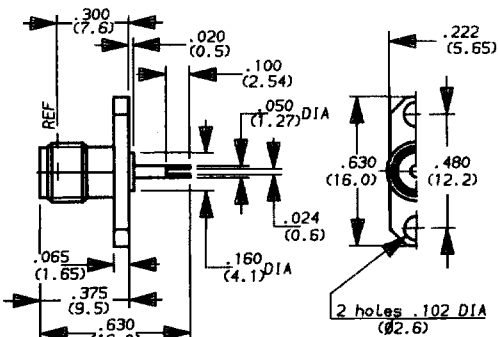
Square flange mount jack receptacle



PART NUMBER	R 125 614 011*	R 125 616 021*
Captive contact	YES	NO
• Manufactured upon request		

See footnote 1

Narrow flange mount jack receptacle



PART NUMBER	R 125 507 001*
Captive contact	NO
• Manufactured upon request	

See footnote 1

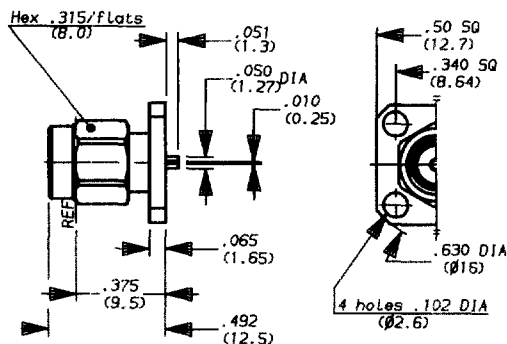
1) The standard units have passivated stainless steel finish. For gold plated version, change the last digit from 1 to 0 : Ex R 125 500

PANEL MOUNT RECEPTACLES WITH SLOT TERMINAL

Square flange mount plug receptacle

PART NUMBER	R 125 488 411*	R 125 494 411*
Captive contact	YES	NO

*Manufactured upon request

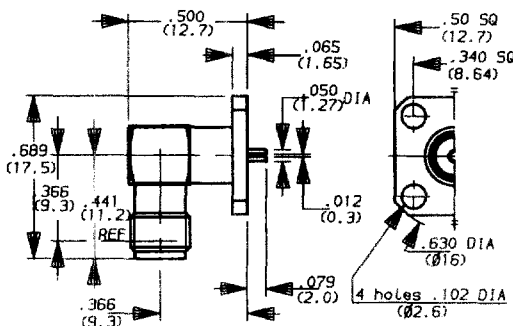


See footnote 1.

Right angle square flange mount jack receptacle

PART NUMBER	R 125 652 001*
Captive contact	YES

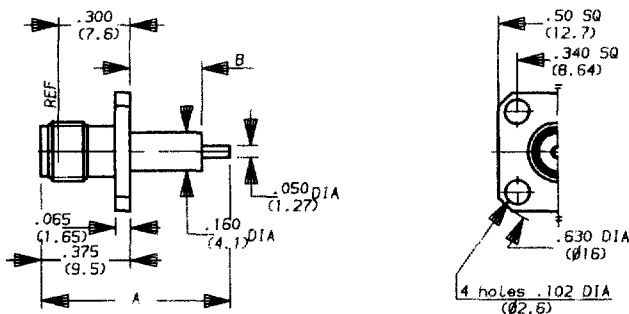
*Manufactured upon request



See footnote 1.

PANEL & BULKHEAD MOUNT RECEPTACLES WITH STRAIGHT TERMINAL

Square flange mount jack receptacle



PART NUMBER	R 125 413 001	R 125 414 001	R 125 415 001	R 125 415 271*
Captive contact	NO	YES	YES	YES
A DIM.	1.000 (25.4)	1.000 (25.4)	1.181 (30)	1.080 (27.4)
B DIM.	.500 (12.7)	.500 (12.7)	.709 (18)	.591 (15)

*Manufactured upon request

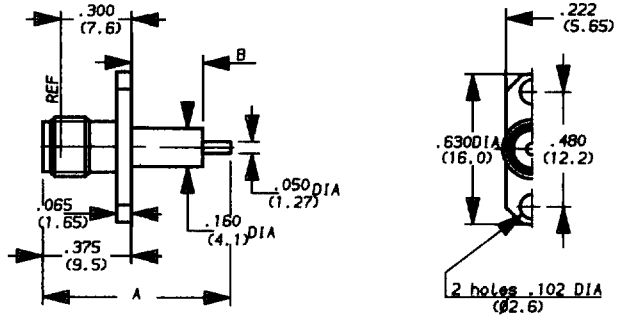
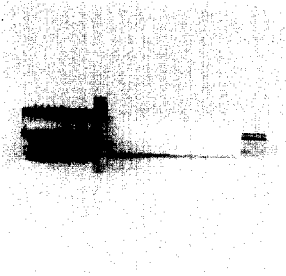
See footnote 1.

1) The standard units have passivated stainless steel finish. For gold plated version, change the last digit from 1 to 0 : Ex R 125 488 410

SMA

PANEL & BULKHEAD MOUNT RECEPTACLES WITH STRAIGHT TERMINAL

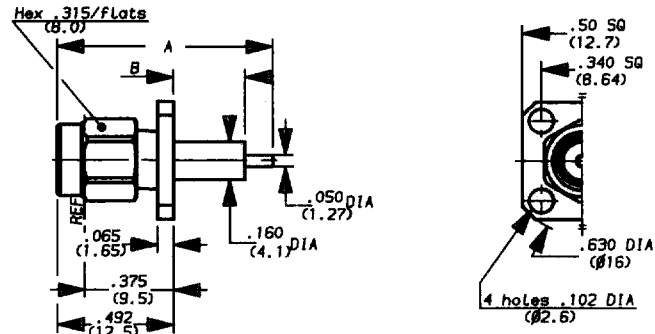
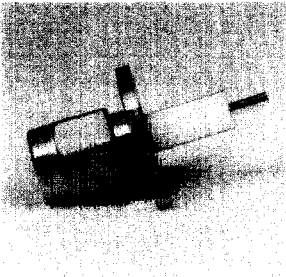
Narrow flange mount jack receptacle



PART NUMBER	R 125 464 001	R 125 464 271
Captive contact	YES	YES
A DIM.	1.000 (25.4)	1.080 (27.4)
B DIM.	.500 (12.7)	.591 (15)

See footnote 1.

Square flange mount plug receptacle



PART NUMBER	R 125 443 001*	R 125 444 001	R 125 449 001
Captive contact	NO	YES	YES
A DIM.	.984 (25)	.984 (25)	1.752 (44.5)
B DIM.	.335 (8.5)	.335 (8.5)	1.122 (28.5)

*Manufactured upon request

See footnote 1.

1) The standard units have passivated stainless steel finish. For gold plated version, change the last digit from 1 to 0 : Ex R 125 464

