

For component and system panels, cavities, waveguide and strip transmission lines, there are an infinite number of mounting and contact termination treatments possible.

Stock availability exists for more styles.

Flange mount, front panel, and through panel attachment styles are available in a number of sizes.

Most SMA receptacle connectors are supplied with captured center contact.

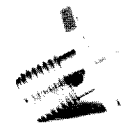
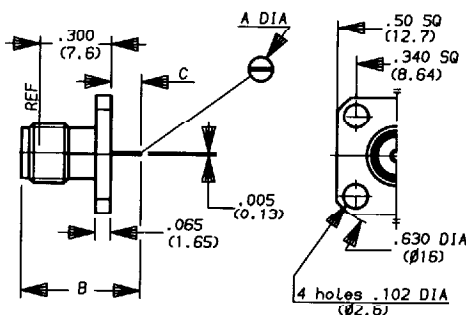
SMA right angle connectors utilize laser welding for contact attachment.

Where launching directly to stripline circuits is required, the SMA stripline series is the optimum choice.

PANEL MOUNT RECEPTACLES WITH TAB TERMINAL

Square flange mount jack receptacle

PART NUMBER	R 125 510 001	R 125 620 001
Captive contact	YES	YES
A DIA.	.050 (1.27)	.024 (0.6)
B DIM.	.472 (12)	.409 (10.4)
C DIM.	.100 (2.54)	.035 (0.9)

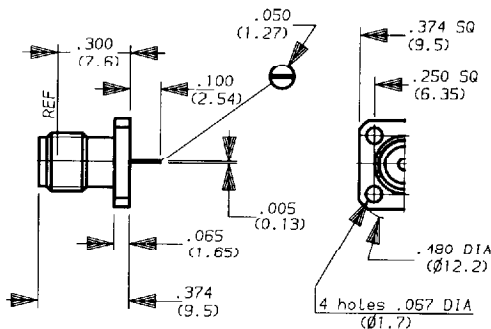


See footnote 1.

Square flange mount jack receptacle

PART NUMBER	R 125 510 501*
Captive contact	YES

Manufactured upon request

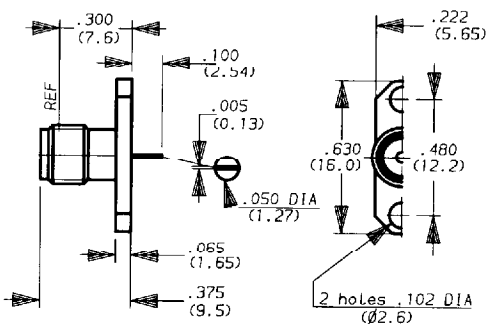


See footnote 1

Narrow flange mount jack receptacle

PART NUMBER	R 125 497 001*
Captive contact	YES

Manufactured upon request



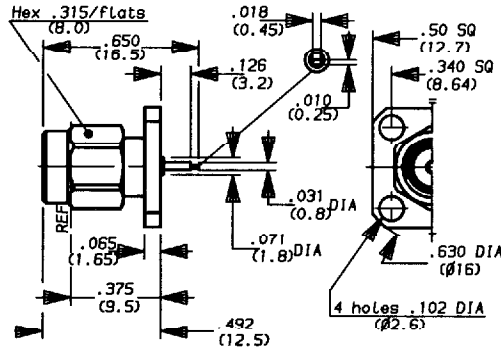
See footnote 1

The standard units have passivated stainless steel finish. For gold plated version, change the last digit from 1 to 0 : Ex R 125 510

SMA

PANEL MOUNT RECEPTACLES WITH TAB TERMINAL

Square flange mount plug receptacle

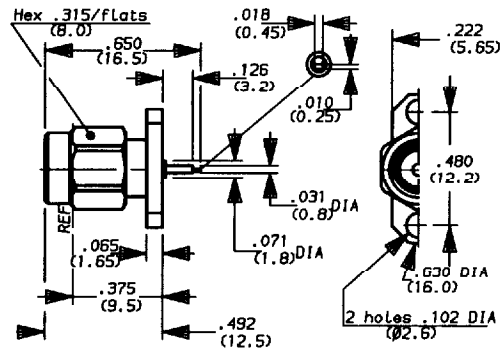


PART NUMBER	R 125 500 001*
Captive contact	YES
Installation	M 12 page 77

*Manufactured upon request

See footnote 1

Narrow flange mount plug receptacle



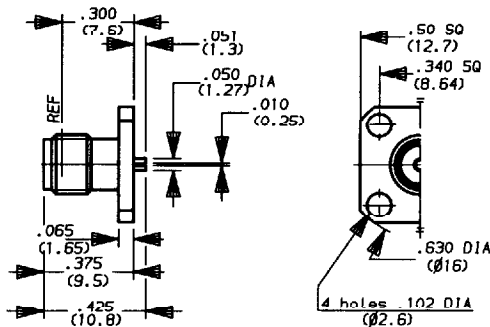
PART NUMBER	R 125 472 001*
Captive contact	YES
Installation	M 12 page 77


*Manufactured upon request

See footnote 1

PANEL MOUNT RECEPTACLES WITH SLOT TERMINAL

Square flange mount jack receptacle

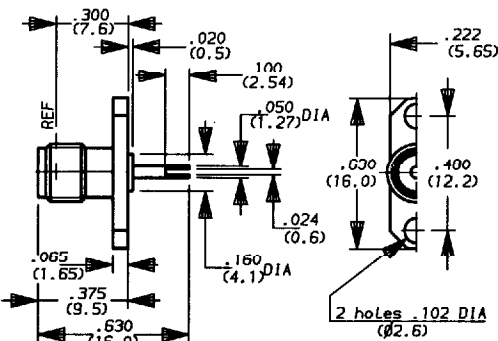


PART NUMBER		
	R 125 614 011*	R 125 616 021*
Captive contact	YES	NO

*Manufactured upon request

See footnote 1

Narrow flange mount jack receptacle



PART NUMBER	R 125 507 001*
Captive contact	NO

*Manufactured upon request

See footnote 1

1) The standard units have passivated stainless steel finish. For gold plated version, change the last digit from 1 to 0 : Ex R 125 500

