



IN SERIES ADAPTERS

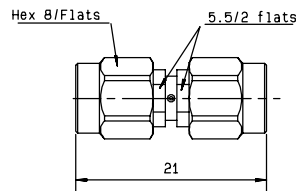
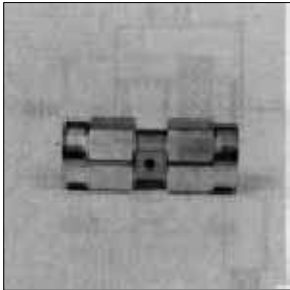


Fig. 1

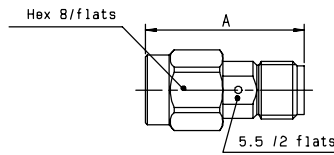


Fig. 2

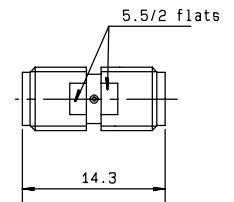


Fig. 3

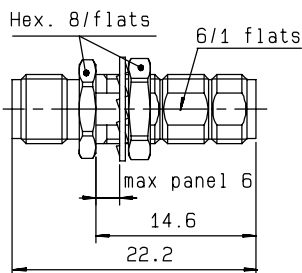


Fig. 4

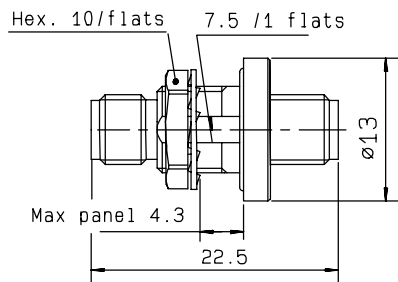


Fig. 5

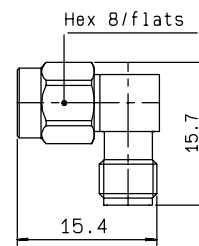


Fig. 6

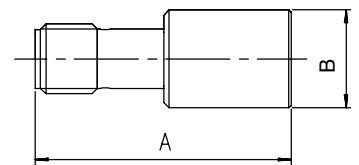


Fig. 7

Part number (gold)	Part number (passivated)	Fig.	Captive center contact	Dimensions (mm)		Cut out	Note
				A	B		
R125 703 000	R125 703 001	1	yes				male-male
R125 704 000	R125 704 001	2	yes	17.5			male-female
R125 705 000*	R125 705 001	3	yes				female-female
R125 720 000	R125 720 001	4	yes			P03	bulkhead female-female
R125 753 000	R125 753 001	5	yes			P12	bulkhead hermetically sealed female-female
R125 771 000	R125 771 001*	6	yes				right angle male-female
	R125 791 501	7	yes	23.3	8.9		PUSH-ON** male
	R125 792 501	7	yes	24.8	11		PUSH-ON** female

** PUSH-ON adapter, see our catalog **D1036DE**

TEE IN SERIES ADAPTERS

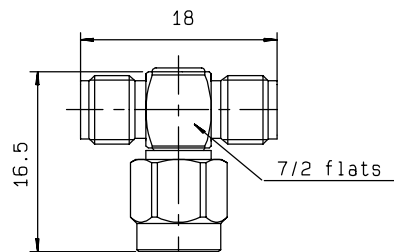
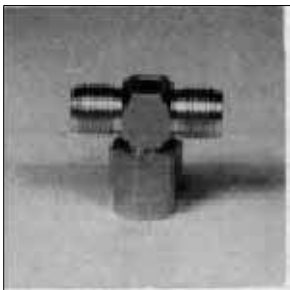


Fig. 1

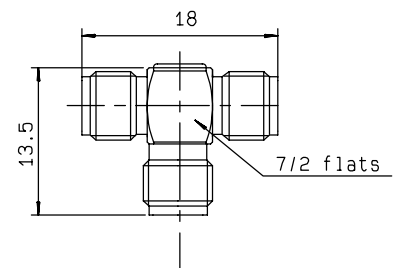


Fig. 2

Part number (gold)	Part number (passivated)	Fig.	Captive center contact
R125 780 000	R125 780 001	1	yes
R125 781 000	R125 781 001	2	yes

* packaging: 100 pieces. For unit packaging, add "W" after the P/N