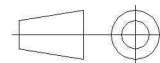
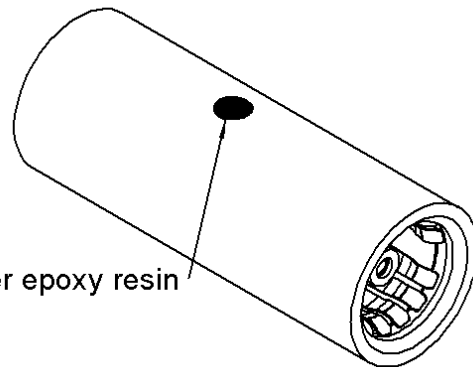
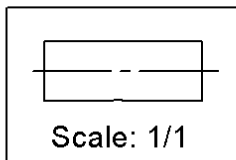
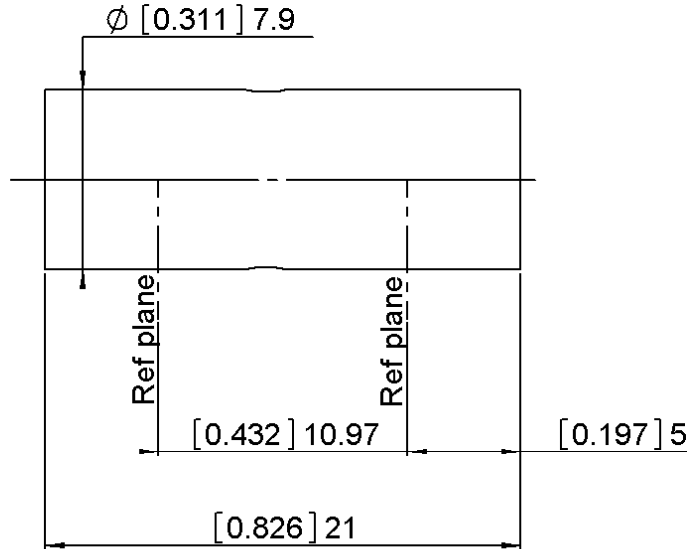


FEMALE-FEMALE STRAIGHT ADAPTER

R128.705.711

Série : BMA



All dimensions are in mm.

COMPONENTS	MATERIALS	PLATING (μm)
BODY	STAINLESS STEEL	PASSIVATION
CENTER CONTACT	BERYLLIUM COPPER	GOLD 1.3 OVER COPPER 2.5
OUTER CONTACT	BERYLLIUM COPPER	NPGR.
INSULATOR	PTFE	
GASKET		
OTHERS PARTS		
-	-	-
-	-	-

Issue : 1121 A

In the effort to improve our products, we reserve the rights to make changes judged to be necessary.



FEMALE-FEMALE STRAIGHT ADAPTER

R128.705.711

Série : **BMA**

PACKAGING

SPECIFICATION

Standard	Unit	Other
100	'W' option	Contact us

ELECTRICAL CHARACTERISTICS

ENVIRONMENTAL

Impedance	50	Ω
Frequency	0-22	GHz
VSWR	1.20* + 0,0000	x F(GHz) Maxi
Insertion loss	.07	$\sqrt{F(GHz)}$ dB Maxi
RF leakage	- (80)	- F(GHz) dB Maxi
Voltage rating	500	Veff Maxi
Dielectric withstanding voltage	1500	Veff mini
Insulation resistance	5000	M Ω mini

Operating	-65/+165	$^{\circ}$ C
Hermetic seal	NA	Atm.cm3/s
Panel leakage	NA	

MECHANICAL CHARACTERISTICS

OTHER CHARACTERISTICS

Center contact retention		
Axial force – Mating end	27	N mini
Axial force – Opposite end	27	N mini
Torque	NA	N.cm mini

Assembly instruction

Others :
*1.05 at 5 GHz

Recommended torque		
Mating	0	N.cm
	0	N.cm
	0	N.cm
Panel nut	NA	N.cm

Mating life	1000	Cycles mini
Weight	5,1900	g

Issue : **1121** A

In the effort to improve our products, we reserve the rights to make changes judged to be necessary.

