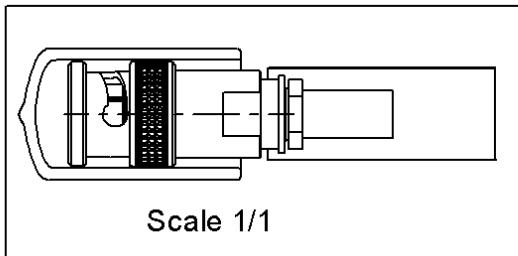
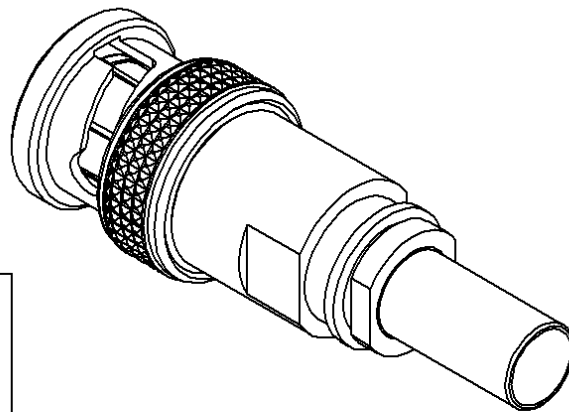
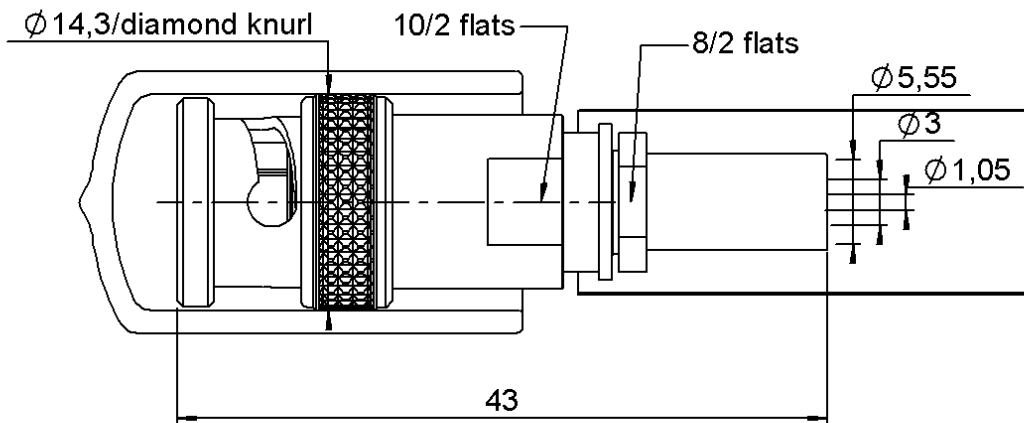


STRAIGHT PLUG CRIMP TYPE

R141.097.000

CABLE 5/50 D

Series : BNC



All dimensions are in mm.



COMPONENTS	MATERIALS	PLATINGS (μm)
BODY	BRASS	NICKEL 2
CENTER CONTACT	BRASS	GOLD 0.5 OVER NICKEL 2
OUTER CONTACT	-	-
INSULATOR	PTFE	-
GASKET	SILICONE RUBBER	-
OTHERS PARTS	-	-
-	-	-
-	-	-

Issue : 1435 D

In the effort to improve our products, we reserve the right to make changes judged to be necessary.



STRAIGHT PLUG CRIMP TYPE

R141.097.000

CABLE 5/50 D

Series : BNC

PACKAGING

SPECIFICATION

ASN-E0460 F01

CABLE ASSEMBLY

Standard	Unit	Other
1	'W' option	Contact us

ELECTRICAL CHARACTERISTICS

Stripping	a	b	c	d	e	f
mm	9,00	9,00	23,0	0,00	0,00	0,00

Impedance	50	Ω
Frequency	0-4	GHz
VSWR	1.3 + 0,0000	x F(GHz) Maxi
Insertion loss	0.115	\sqrt{F} (GHz) dB Maxi
RF leakage	- (57)	- F(GHz) dB mini
Voltage rating	500	Veff Maxi
Dielectric withstanding voltage	1500	Veff mini
Insulation resistance	5000	M Ω mini

Assembly instruction :

Recommended cable(s)
 RG 142
 RG 142 FTX
 RG 223
 KX 23
 RG 400

MECHANICAL CHARACTERISTICS

Cable retention

- pull off	220	N mini
- torque	NA	N.cm

Center contact retention		
Axial force – Mating end	27	N mini
Axial force – Opposite end	27	N mini
Torque	NA	N.cm mini

TOOLING

Part Number	Description	Hexagon
R282246000	CRIMPING DIES M22520/5-05	5.41
282291	CRIMPING TOOL M22520/1-01	2x4 (pos. 7)
282997	POSITIONER FOR TOOL 282.291(M22520/1-13)	rouge
R282293000	CRIMPING TOOL M22520/5-01	-

Recommended torque		
Mating	NA	N.cm
Panel nut	NA	N.cm
Clamp nut	170	N.cm
A/F clamp nut	8,0000	mm

Mating life	500	Cycles mini
Weight	16,0880	g

ENVIRONMENTAL

Operating temperature	-65/+165	$^{\circ}$ C
Hermetic seal	NA	Atm.cm3/s
Panel leakage	NA	

OTHERS CHARACTERISTICS

Issue : 1435 D

In the effort to improve our products, we reserve the right to make changes judged to be necessary.

