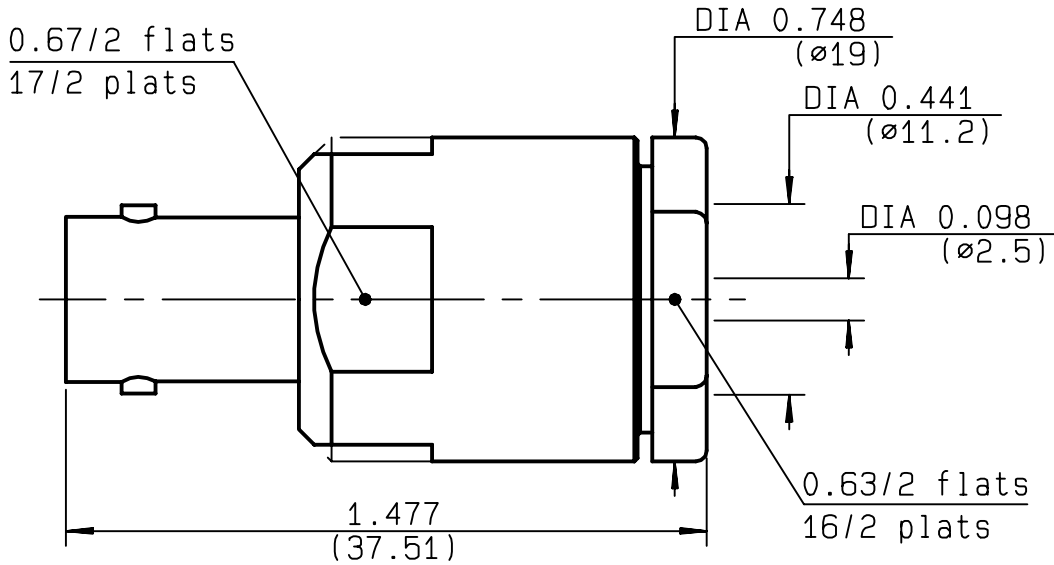


**STRAIGHT JACK CLAMP TYPE  
CABLE 10+11/50**

**R141.219.000**  
**SERIES BNC**



NOMINAL IMPEDANCE	<b>50</b> Ω	CABLES : <b>KX 13</b> <b>KX 4</b> <b>RG 213</b> <b>RG 214</b> <b>RG 225</b> <b>RG 393</b>
FREQUENCY RANGE	<b>0-4</b> GHz	
TEMPERATURE RATING	<b>-65/+165</b> °C	
V.S.W.R	<b>1.2</b> + x F(GHz)Maxi	
RF INSERTION LOSS	<b>0.1</b> √F(GHz) dB Maxi	
VOLTAGE RATING	<b>500</b> Veff Maxi	
DIELECTRIC WITHSTANDING VOLTAGE	<b>1500</b> Veff Mini	
INSULATION RESISTANCE	<b>5000</b> MΩMini	
HERMETIC SEAL	<b>NA</b> Atm.cm <sup>3</sup> /s	
LEAKAGE (pressurized only)	<b>NA</b>	
MECHANICAL DURABILITY	<b>500</b> Cycles	OTHERS CHARACTERISTICS  CABLE RETENTION <b>350</b> N Mini CENTER CONTACT RETENTION Axial force - mating end <b>27</b> N Mini Axial force - opposite end <b>27</b> N Mini Torque <b>NA</b> cm.N Mini  RECOMMENDED TORQUES Mating <b>NA</b> cm.N Panel nut <b>NA</b> cm.N Clamp nut <b>450</b> cm.N
WEIGHT	<b>36.8</b> gr	
SPECIFICATION		

CONNECTOR PARTS	MATERIALS	FINISH	(all values are given ) in micrometers
BODY	BRASS	NICKEL 2	
OUTER CONTACT			
CENTER CONTACT	BERYLLIUM COPPER	GOLD 0.5 OVER NICKEL 2	
INSULATOR	PTFE	-	
GASKET	SILICONE RUBBER	-	
OTHERS PIECES	BRASS	NICKEL 2	

ISSUE	CREATION DATE	FILE PART-NUMBER
<b>9843A00</b>	<b>22/12/1997</b>	<b>97-0011-028</b>



PERRIN

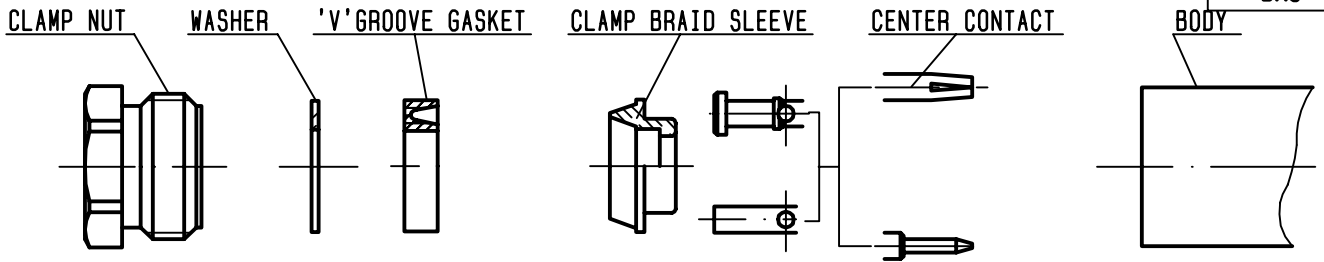
The information given here is subject to change without notice.  
Design changes may be in order to improve the product .

*Connect to the future*



**R141.219.000**

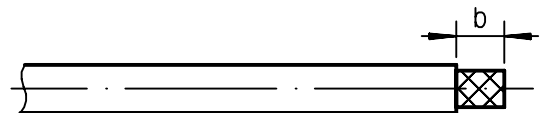
ISSUE **9843A00** SERIES **BNC**



①

Strip the cable .

-  
-  
-  
-

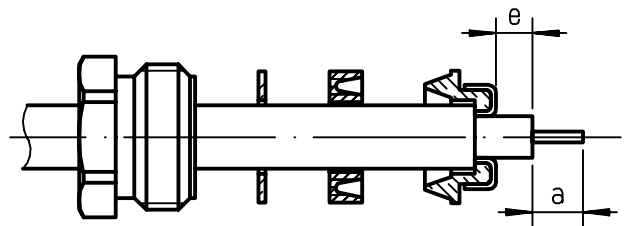


Stripping	a	b	c	d	e
inch	0.118	0.354	0	0	0.039
mm	3	9			1

②

Slide clamp nut, washer and 'V'groove gasket onto cable .  
Slide clamp braid sleeve over braid .  
Fold braid back and trim off extra braid .  
Trim dielectric back as shown .

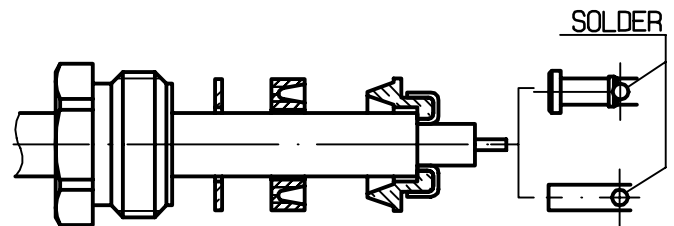
-



③

Solder the center contact onto cable center conductor .

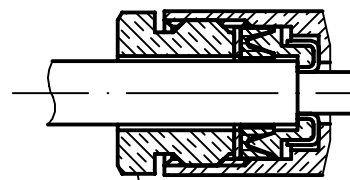
-  
-  
-  
-  
-  
-



④

Screw sub-assembly into the connector body .  
( recommended coupling torque 450N.cm )  
39.82in.lb

-  
-



Hex. : 16 mm /flats  
Hex. : 0.63inch /flats