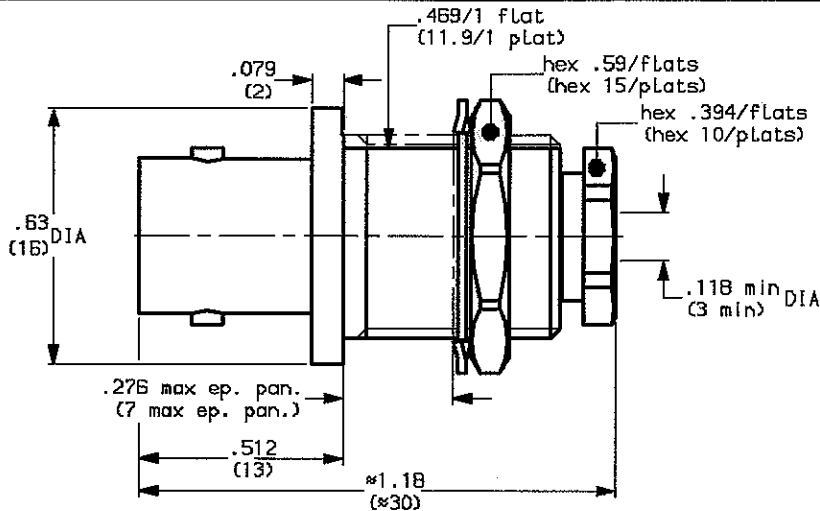


STRAIGHT BULKHEAD CABLE JACK-CLAMP TYPE  
CABLE 2.6/50+75

PEN DEP91.R141.000



WEIGHT oz ( g)

CABLES :RG174-KX22-RG179

|   | MM   |      | INCH |      |
|---|------|------|------|------|
|   | mini | maxi | mini | maxi |
| A | 12.7 | 12.8 | .5   | .504 |
| C | 12   | 12.1 | .472 | .476 |

CHARACTERISTICS

|                                 |                      |
|---------------------------------|----------------------|
| NOMINAL IMPEDANCE               | 50 Ω                 |
| FREQUENCY RANGE                 | 0-4 GHz              |
| TEMPERATURE RATING              | -65/+165 °C          |
| VSWR                            | AD Max               |
| RF INSERTION LOSS               | 0.11 √F dB Maxi      |
| VOLTAGE RATING                  | 500 Vrms Maxi        |
| DIELECTRIC WITHSTANDING VOLTAGE | 1500 Vrms mini       |
| INSULATION RESISTANCE           | 5000 MΩ mini         |
| HERMETIC SEAL                   | NA cc/s<br>Atm.cm3/s |
| LEAKAGE (pressurized only)      | NA psi<br>MPa        |
| -                               | -                    |
| -                               | -                    |

|                 |      |                |
|-----------------|------|----------------|
| STANDARDISATION | CECC | 22120/BNC      |
|                 | CEI  | 169-B/BNC      |
|                 | MIL  | STD348-301/BNC |
|                 | NF   | C93-564/KBN    |

CABLE RETENTION 24.75 Lb mini  
110 N

CENTER CONTACT RETENTION

|                            |                                  |
|----------------------------|----------------------------------|
| Axial force - mating end   | 6.075 <sub>27</sub> Lb mini<br>N |
| Axial force - opposite end | 6.075 <sub>27</sub> Lb mini<br>N |
| Torque (Min)               | NA Inch.oz<br>cm.N               |

RECOMMENDED TORQUES

|           |                       |                 |
|-----------|-----------------------|-----------------|
| Mating    | NA                    | inch.Lb<br>cm.N |
| Panel nut | 32.782 <sub>370</sub> | inch.Lb<br>cm.N |
| Clamp nut | 13.27 <sub>150</sub>  | inch.Lb<br>cm.N |

CONSTRUCTION

| CONNECTOR PARTS | MATERIALS        | FINISH |
|-----------------|------------------|--------|
| BODY            | BRASS            | NICKEL |
| OUTER CONTACT   | BRASS            | NICKEL |
| CENTER CONTACT  | BERYLLIUM COPPER | GOLD   |
| INSULATORS      | PTFE             | -      |
| GASKET          | SILICON          | -      |
| SCREW NUT       | BRASS            | NICKEL |
| COUPLING NUT    | BRASS            | NICKEL |
| -               | -                | -      |
| -               | -                | -      |

| ISSUE | REVISION No | DESCRIPTION | BY | DATE |
|-------|-------------|-------------|----|------|
| .     | .           | .           | .  | .    |
| .     | .           | .           | .  | .    |
| .     | .           | .           | .  | .    |
| .     | .           | .           | .  | .    |

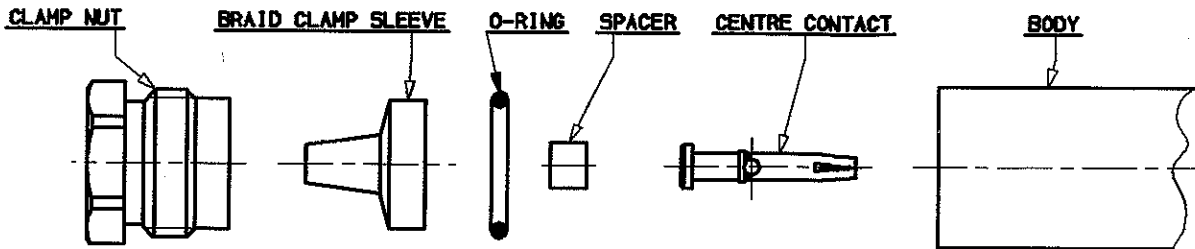
Initiated on 27-FEB-91

The information given here is subject to change without notice. Design changes may be in order to improve the product.

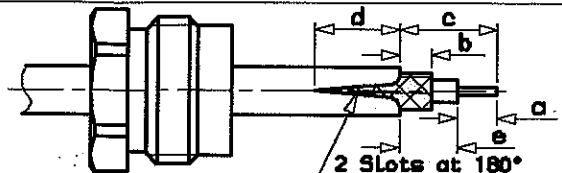


Superseded on

STRAIGHT BULKHEAD CABLE JACK-CLAMP TYPE  
CABLE 2.6/50+75

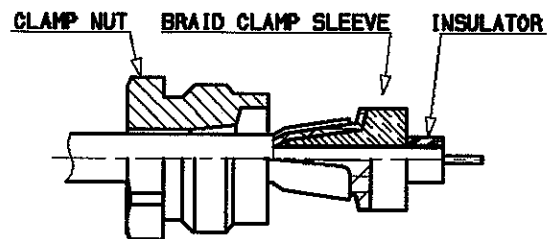


- ①
- 1-1 Slide clamp nut onto the cable .
  - 1-2 Strip the cable .
  - 1-3 Cut the jacket ( 2 Slots )  
apart if necessary.

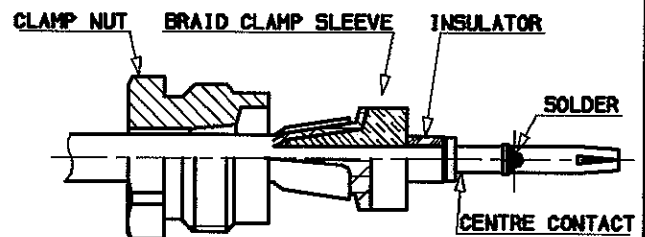


| Stripping | a    | b    | c    | d    | e    |
|-----------|------|------|------|------|------|
| inch      | .157 | .079 | .354 | .078 | .197 |
| mm        | 4    | 2    | 9    | 2    | 5    |

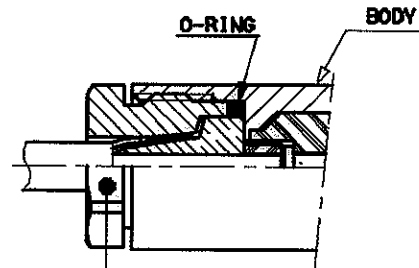
- ②
- 2-1 Slide the clamp braid sleeve between  
cable dielectric and braid .
  - 2-2 Cut the braid flush with the clamp  
braid sleeve .
  - 2-3 Slide the spacer .



- ③
- 3-1 Solder the cable inner conductor  
into centre contact .
  - 3-2 Slide the back nut over  
the clamp assembly .



- ④
- 4-1 Screw sub-assembly into the connector  
body .  
recommended coupling torque  
(3.27 in.lb )



Hex. .394 / flats

| ISSUE | REVISION No | DESCRIPTION | BY | DATE |
|-------|-------------|-------------|----|------|
| .     | .           | .           | .  | .    |
| .     | .           | .           | .  | .    |
| .     | .           | .           | .  | .    |

Initiated on 27 Feb 91  
Superseded on \_\_\_\_\_

The information given here is subject to change without notice. Design changes may be in order to improve the product.

