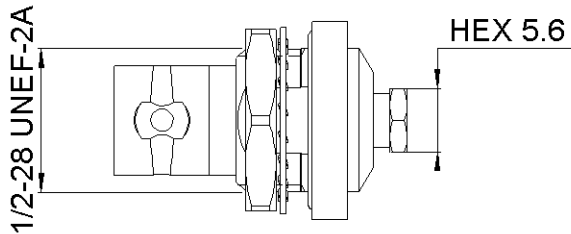
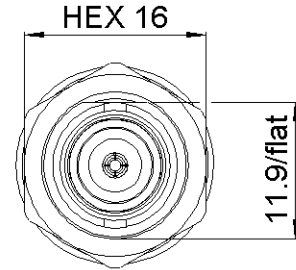
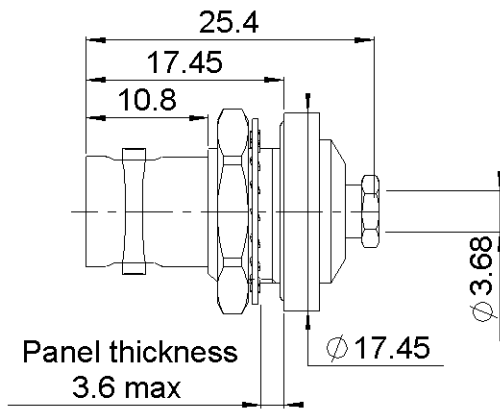
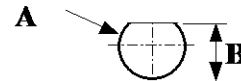


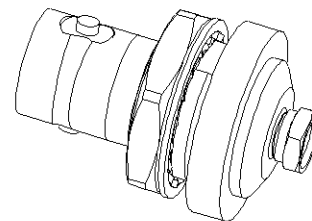
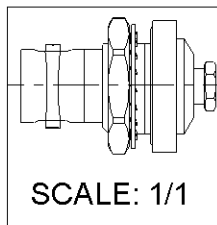
PAGE 1/2	ISSUE 1435B	SERIES BNC	PART NUMBER R141338007
----------	-------------	------------	------------------------



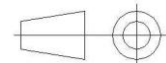
PANEL CUT OUT



	mm	
	Maxi	mini
A	12.8	12.7
B	12.1	12



All dimensions are in mm.



COMPONENTS	MATERIALS	PLATING (µm)
Body	BZ4	BBR
Center contact	BERYLLIUM COPPER	GOLD OVER COPPER
Outer contact	-	-
Insulator	PTFE	
Gasket	SILICONE RUBBER	
Others parts	BZ4	BBR
-	-	-
-	-	-

PAGE 2/2	ISSUE 1435B	SERIES BNC	PART NUMBER R141338007
-----------------	--------------------	-------------------	-------------------------------

PACKAGING

Standard	Unit	Other
100	Contact us	Contact us

ELECTRICAL CHARACTERISTICS

Impedance	50	Ω
Frequency	0-4	GHz
VSWR	1.3 + 0.0000	x F(GHz) Maxi
Insertion loss	0.2*	\sqrt{F} (GHz) dB Maxi
RF leakage	- (-55**)	- F(GHz)) dB Maxi
Voltage rating	500	Veff Maxi
Dielectric withstanding voltage	1500	Veff mini
Insulation resistance	5000	M Ω mini

MECHANICAL CHARACTERISTICS

Center contact retention		
Axial force – Mating End	27.2	N mini
Axial force – Opposite end		N mini
Torque	NA	N.cm mini
Recommended torque		
Mating		N.cm
Panel nut	370	N.cm
Clamp nut	70	N.cm
A/F clamp nut	11.9000	mm
Mating life	500	Cycles mini
Weight	4.8800	g

ENVIRONMENTAL

Operating temperature	-65/+165	$^{\circ}\text{C}$
Hermetic seal		Atm.cm3/s
Panel leakage	IP64	

SPECIFICATION

CABLE ASSEMBLY

Stripping	a	b	c	d	e	f
mm	4.5	7.8	0	0	0	0

Assembly instruction:

Recommended cable(s)
NON MAGNETIC CABLE
UT141C AMAG

Characteristics indicated on this data sheet are those that can be achieved with the highest performance cable. Intrinsic limitations of the cable may diminish the performance of the assembly

Cable retention

- pull off	300	N mini
- torque		N.cm

TOOLING

Part Number	Description	Hexagon
.	.	.

OTHER CHARACTERISTICS

* at 3GHz

** from 2 to 3 GHz

NON MAGNETIC COMPONENT