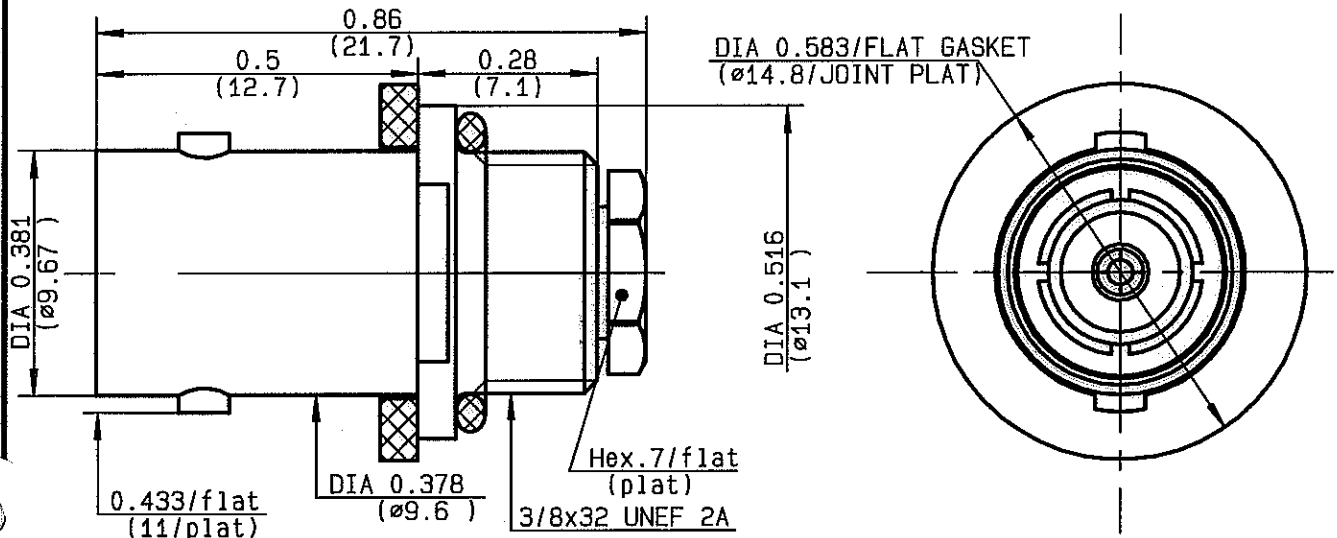


**STRAIGHT JACK RECEPTACLE PANEL SEAL**  
**CABLE 2/50 S**

**R141.590.020**  
**SERIES BNC**



NOMINAL IMPEDANCE	<b>50</b> Ω	CABLES : <b>KX 21</b>
FREQUENCY RANGE	<b>0-2</b> GHz	<b>RG 178</b>
TEMPERATURE RATING	<b>-40/+90</b> °C	<b>RG 178 LC</b>
V.S.W.R	<b>1.3 +</b> x F(GHz)Maxi	<b>RG 196</b>
RF INSERTION LOSS	<b>NA</b> √F(GHz) dB Maxi	
VOLTAGE RATING	<b>250</b> Veff Maxi	
DIELECTRIC WITHSTANDING VOLTAGE	<b>500</b> Veff Mini	
INSULATION RESISTANCE	<b>500</b> MΩMini	OTHERS CHARACTERISTICS
HERMETIC SEAL	<b>NA</b> Atm.cm <sup>3</sup> /s	CABLE RETENTION
LEAKAGE (pressurized only)	<b>IP67</b>	<b>15</b> N Mini
MECHANICAL DURABILITY	<b>500</b> Cycles	CENTER CONTACT RETENTION
WEIGHT	<b>7.7</b> gr	Axial force - mating end
SPECIFICATION		<b>27</b> N Mini
		Axial force - opposite end
		<b>NA</b> N Mini
		Torque
		<b>NA</b> cm.N Mini
		RECOMMENDED TORQUES
		Mating
		<b>NA</b> cm.N
		Panel nut
		<b>NA</b> cm.N
		Clamp nut
		<b>70</b> cm.N

CONNECTOR PARTS	MATERIALS	FINISH	(all values are given ) in micrometers
BODY	BRASS	NICKEL 2	
OUTER CONTACT			
CENTER CONTACT	BERYLLIUM COPPER	GOLD 0.5 OVER NICKEL 2	
INSULATOR	PTFE	-	
GASKET	SILICONE RUBBER	-	
OTHERS PIECES	BRASS	NICKEL 2	

ISSUE	CREATION DATE	FILE PART-NUMBER
<b>9940A00</b>	<b>25/08/1999</b>	<b>99-1204-019</b>



*Connect to the future*

The information given here is subject to change without notice.  
Design changes may be in order to improve the product.



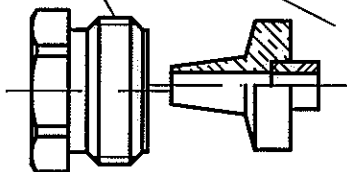
**RADIALL®**

**R141.590.020**

ISSUE 9940A00

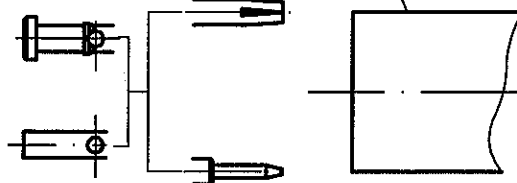
SERIES  
BNC

CLAMP NUT CLAMP BRAID SLEEVE



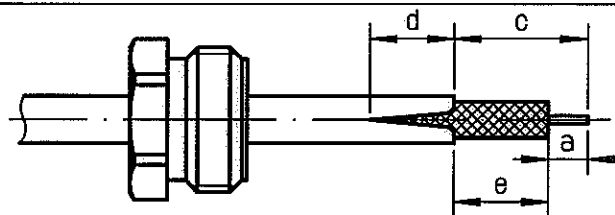
CENTER CONTACT

BODY



①

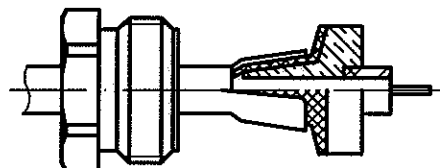
Slide clamp nut onto cable .  
Strip the cable .  
Cut 2 slots in the jacket  
if necessary .  
-



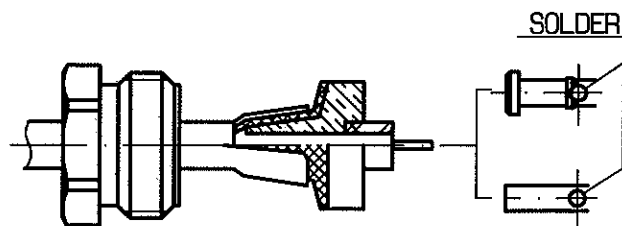
Stripping	a	b	c	d	e
inch	0.118 0		0.185	0.098	0.067
mm	3		4.7	2.5	1.7

②

Slide the clamp braid sleeve between  
cable dielectric and braid .  
Cut the braid flush with the clamp  
braid sleeve .  
Slide the spacer onto the cable .  
-  
-  
-

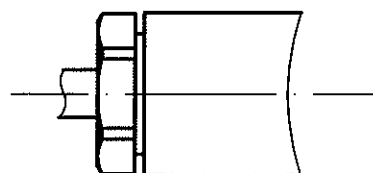


Solder center contact onto cable  
center conductor .  
Slide back nut over clamp assembly .  
-  
-  
-  
-



④

Screw sub-assembly into the connector  
body .  
( recommended coupling torque 70 N.cm )  
6.19 in.lb  
-



Hex. : 7 mm /flats  
Hex. : .275inch /flats