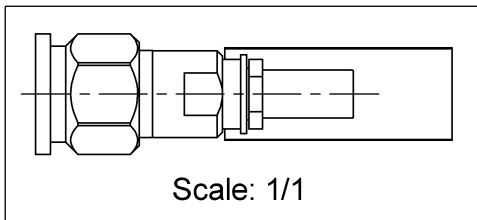
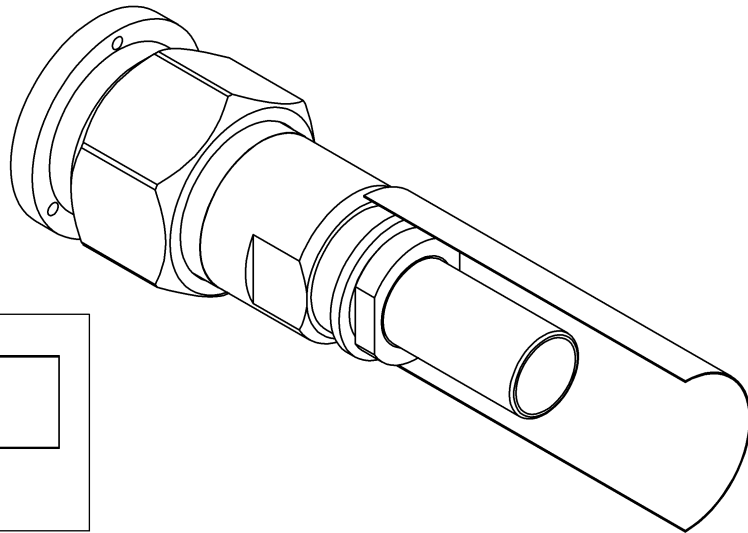
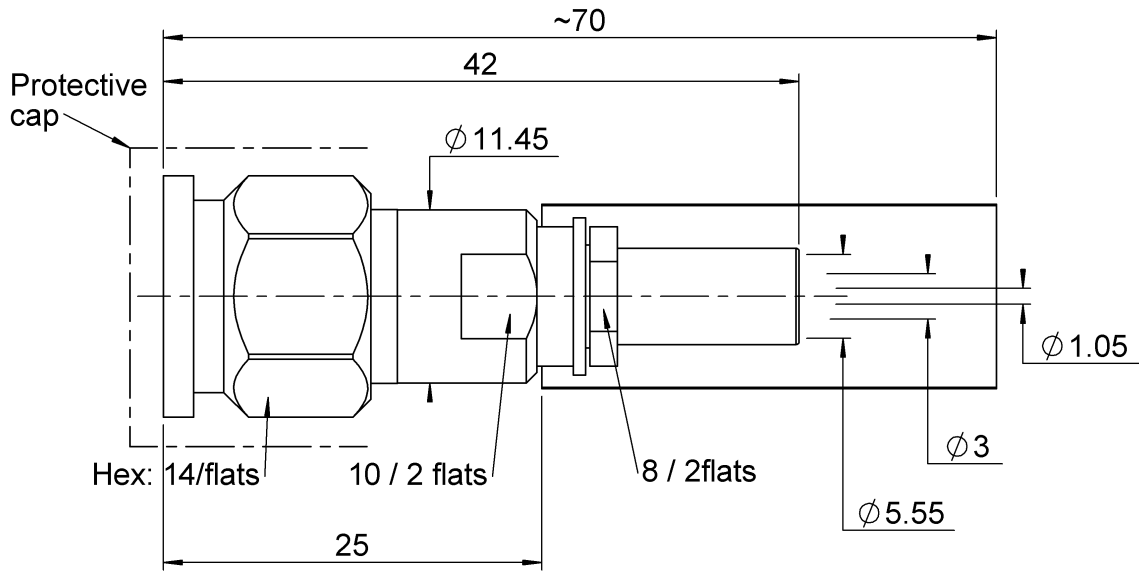


PAGE 1/3	ISSUE 21-12-15E	SERIES TNC	PART NUMBER R143097700
----------	-----------------	------------	------------------------



All dimensions are in mm.



COMPONENTS	MATERIALS	PLATING (µm)
Body	STAINLESS STEEL.	PASSIVATED.
Center contact	BRASS	GOLD 0.5 OVER NICKEL 2
Outer contact	-	-
Insulator	PTFE	
Gasket	SILICONE RUBBER	
Others parts	STAINLESS STEEL.	PASSIVATED.
-	-	-
-	-	-

PAGE 2/3	ISSUE 21-12-15E	SERIES TNC	PART NUMBER R143097700
-----------------	------------------------	-------------------	-------------------------------

PACKAGING

Standard	Unit	Other
1	Contact us	Contact us

ELECTRICAL CHARACTERISTICS

Impedance	50	Ω
Frequency	0-6	GHz
VSWR	1.2 + 0,0000	x F(GHz) Maxi
Insertion loss	0.06	√F(GHz) dB Maxi
RF leakage	- (57*)	- F(GHz)) dB Maxi
Voltage rating	500	Veff Maxi
Dielectric withstanding voltage	1500	Veff mini
Insulation resistance	5000	MΩ mini

MECHANICAL CHARACTERISTICS

Center contact retention			
Axial force – Mating End	27	N mini	
Axial force – Opposite end	27	N mini	
Torque	NA	N.cm mini	
Recommended torque			
Mating	265	N.cm	
Panel nut	NA	N.cm	
Clamp nut	370	N.cm	
A/F clamp nut	8,0000	mm	
Mating life	500	Cycles mini	
Weight	20,6400	g	

ENVIRONMENTAL

Operating temperature	-65/+165	°C
Hermetic seal	NA	Atm.cm3/s
Panel leakage	NA	

SPECIFICATION

QAE 06-02 . .
ASNE0461-F01

CABLE ASSEMBLY

Stripping	a	b	c	d	e	f
mm	9	9	23	0	0	0

Assembly instruction:

Recommended cable(s)

RG 142 BU
RG 400
KX 23
RG 142 FTX
RG 223

Characteristics indicated on this data sheet are those that can be achieved with the highest performance cable. Intrinsic limitations of the cable may diminish the performance of the assembly

Cable retention

- pull off	180	N mini
- torque	NA	N.cm

TOOLING

Part Number	Description	Hexagon
R282223000	CRIMPING TOOL	5.41
282291	CRIMPING TOOL M22520/1-01	2x4 (loc 7)
282997	POSITIONER FOR TOOL 282.291(M22520/1-13)	red position
R282293000	CRIMPING TOOL M22520/5-01	
R282246000	CRIMPING DIES M22520/5-05	5.41

OTHER CHARACTERISTICS

*** Up to 3 GHz**