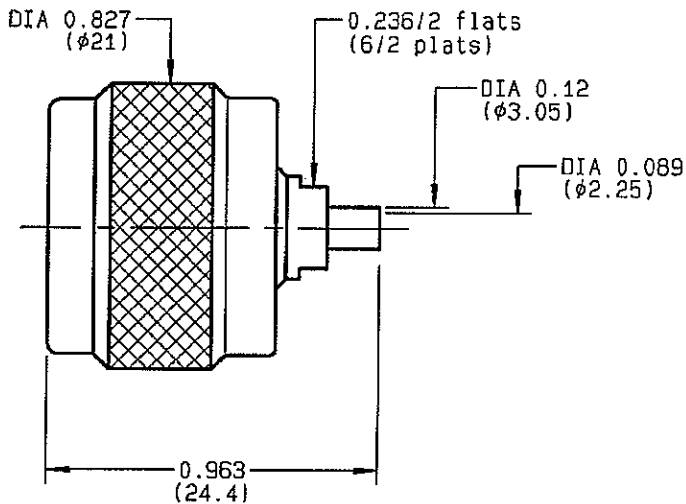


<b>STRAIGHT PLUG SOLDER TYPE CABLE .085</b>	<b>R161.050.300</b> SERIES <b>N</b>
---	--



NOMINAL IMPEDANCE	<b>50</b> Ω	CABLES : <b>KS 1</b>	
FREQUENCY RANGE	<b>0-11</b> GHz	<b>RG 405</b>	
TEMPERATURE RATING	<b>-55/+105</b> °C		
V.S.W.R	<b>1.25 +</b> x F(GHz)Max:		
RF INSERTION LOSS	<b>0.048</b> √F(GHz) dB Max:		
VOLTAGE RATING	<b>335</b> V <sub>eff</sub> Max:		
DIELECTRIC WITHSTANDING VOLTAGE	<b>1000</b> V <sub>eff</sub> Mini:		
INSULATION RESISTANCE	<b>5000</b> MΩ Mini:	OTHERS CHARACTERISTICS	
HERMETIC SEAL	<b>NA</b> Atm.cm <sup>3</sup> /s	CABLE RETENTION	<b>200</b> N Mini
LEAKAGE (pressurized only)	<b>NA</b>	CENTER CONTACT RETENTION	
MECHANICAL DURABILITY	<b>500</b> Cycles	Axial force - mating end	<b>NA</b> N Mini
WEIGHT	<b>25.56</b> gr	Axial force - opposite end	<b>NA</b> N Mini
SPECIFICATION		Torque	<b>NA</b> cm.N Mini
		RECOMMENDED TORQUES	
		Mating	<b>130</b> cm.N
		Panel nut	<b>NA</b> cm.N
		Clamp nut	<b>NA</b> cm.N

CONNECTOR PARTS	MATERIALS	FINISH <small>(all values are given in micrometers)</small>
BODY	BRASS	GOLD 0.2 OVER NICKEL 2
OUTER CONTACT		
CENTER CONTACT	BRASS	GOLD 0.5 OVER NICKEL 2
INSULATOR	PTFE	-
GASKET	SILICONE RUBBER	-
OTHERS PIECES	BRASS	BBR 2

QUERIN

ISSUE <b>0630 B</b>	CREATION DATE <b>14/01/1997</b>	FILE PART-NUMBER <b>EPC 96-07</b>	<b>RADIALL</b> ®
------------------------	------------------------------------	--------------------------------------	------------------

The information given here is subject to change without notice. Design changes may be in order to improve the product.

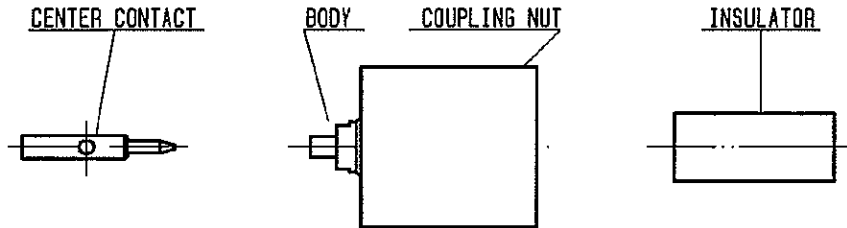
*Connect to the future*



**R161.050.300**

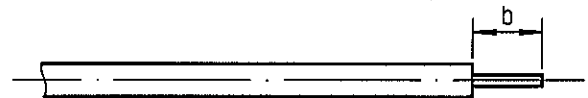
ISSUE **0630 B**

SERIES  
N



①

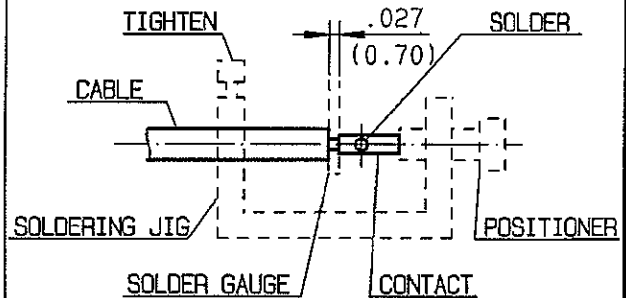
Take the tool kit : R 282 125 010 .  
Strip the dielectric of the cable .  
Stripping tool cable : R 282 051 .  
Trimmer : R 282 063  
Clean the cable .



Stripping	a	b	c	d	e
inch	0	0.1250	0	0	0
mm		3.17			

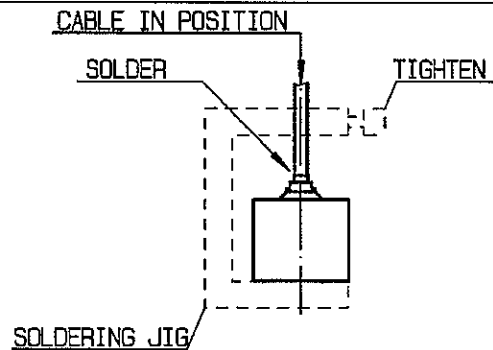
②

Screw the positioner R 282 744 261 onto the soldering jig R 282 740 030 .  
Slide contact into positioner .  
Insert solder gauge R 282 862 090 between contact and cable .  
Tighten and solder the contact .



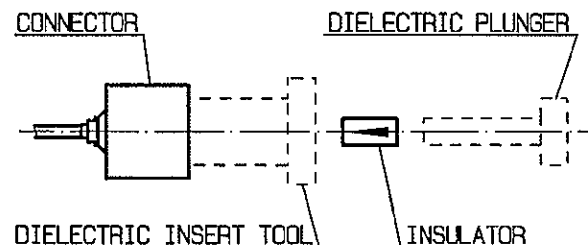
③

After cooling remove cable assembly from the jig .  
Slide cable into the connector until it bottoms against the body .  
Tighten .  
Put 3 rings of solder around the cable and solder .



○

After cooling remove cable assembly from the jig .  
Screw female dielectric insert tool onto connector and insert insulator with the dielectric plunger (R 282 730 161) .



QUERIN