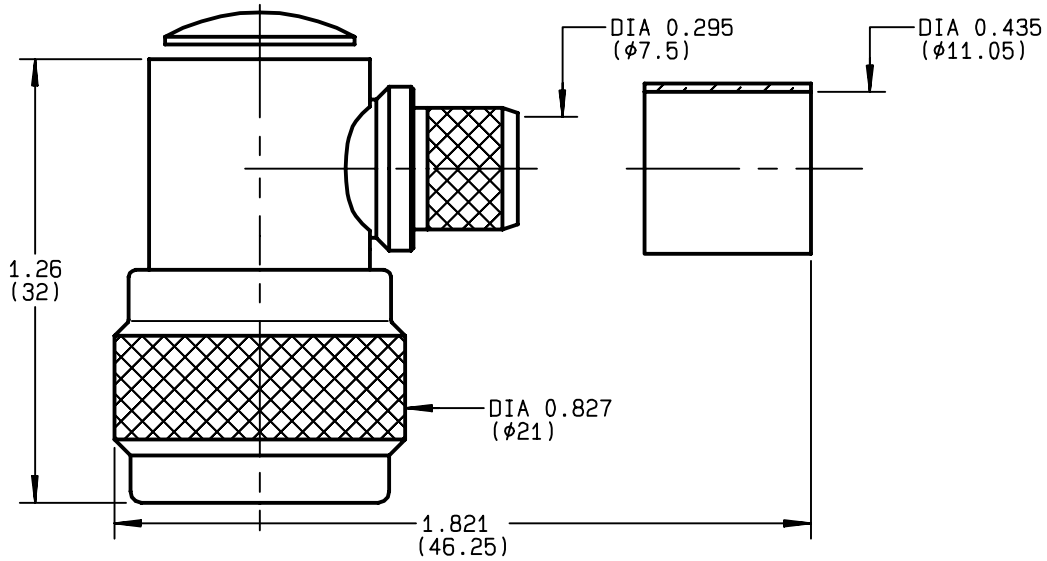


**RIGHT ANGLE PLUG CRIMP TYPE  
CABLE LMR400**

**R161.184.036**  
**SERIES N**



NOMINAL IMPEDANCE	<b>50</b> Ω	CABLES : <b>LMR 400</b> <b>LMR 400 FR</b>
FREQUENCY RANGE	<b>0-6</b> GHz	
TEMPERATURE RATING	<b>-55/+155</b> °C	
V.S.W.R	<b>1.70</b> + x F(GHz)Maxi	
RF INSERTION LOSS	<b>0.07</b> √F(GHz) dB Maxi	
VOLTAGE RATING	<b>1000</b> Veff Maxi	
DIELECTRIC WITHSTANDING VOLTAGE	<b>2500</b> Veff Mini	
INSULATION RESISTANCE	<b>5000</b> MΩMini	
HERMETIC SEAL	<b>NA</b> Atm.cm <sup>3</sup> /s	
LEAKAGE (pressurized only)	<b>NA</b>	
MECHANICAL DURABILITY	<b>500</b> Cycles	OTHERS CHARACTERISTICS
WEIGHT	<b>50.33</b> gr	CABLE RETENTION <b>300</b> N Mini
SPECIFICATION		CENTER CONTACT RETENTION
		Axial force - mating end <b>27</b> N Mini
		Axial force - opposite end <b>27</b> N Mini
		Torque <b>NA</b> cm.N Mini
		RECOMMENDED TORQUES
		Mating <b>130</b> cm.N
		Panel nut <b>NA</b> cm.N
		Clamp nut <b>NA</b> cm.N

CONNECTOR PARTS	MATERIALS	FINISH (all values are given in micrometers)
BODY	BRASS	SILVER 5 OVER COPPER 0.5
OUTER CONTACT	BRASS	SILVER 5 OVER COPPER 0.5
CENTER CONTACT	BRASS	GOLD 0.5 OVER NICKEL 2
INSULATOR	PTFE	-
GASKET	SILICONE RUBBER	-
OTHERS PIECES	BRASS	SILVER 5 OVER COPPER 0.5

ISSUE <b>9845D01</b>	CREATION DATE <b>17/02/1995</b>	FILE PART-NUMBER <b>95-0400-750</b>
-------------------------	------------------------------------	--



**RADIALL**®

MASTRIANO

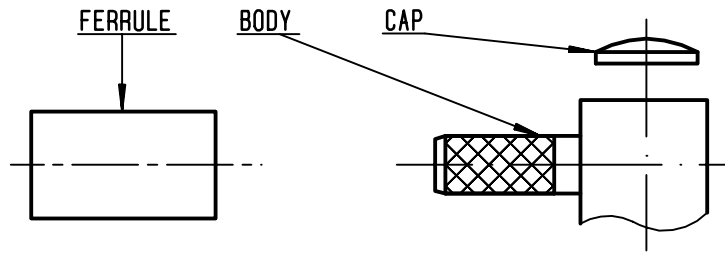
The information given here is subject to change without notice.  
Design changes may be in order to improve the product .

*Connect to the future*



**R161.184.036**

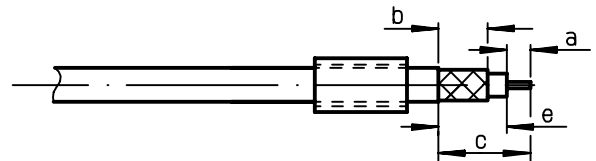
ISSUE 9845D01 SERIES N



①

Slide onto the cable the ferrule .  
Strip the cable .

-  
-

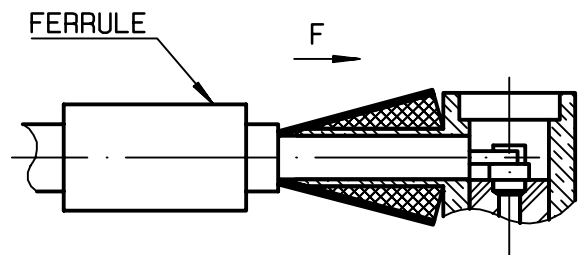


Stripping	a	b	c	d	e
inch	0.197	0.87	1.382	0	1.185
mm	5	22.1	35.1		30.1

②

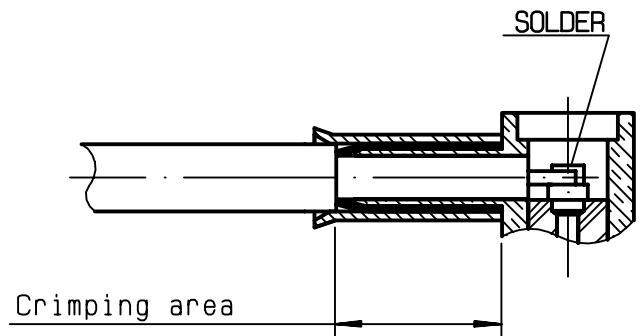
Fan the braid .  
Push connector body under the braid .  
Slide the ferrule on the braid  
( in direction F )

-  
-  
-



③

Crimp the ferrule with crimping tool R282 231 000 ( Hex. : 0.415 ) or crimping tool R 282 293 000 ( M22520/5-01 ) + dies R 282 235 116 ( Y116 DANIELS)  
Solder inner conductor .



④

Place the cap .  
Press cap flush or slightly below surface of body assembly .

-  
-

