

## RIGHT ANGLE PLUGS, CRIMP TYPE, FOR FLEXIBLE CABLES

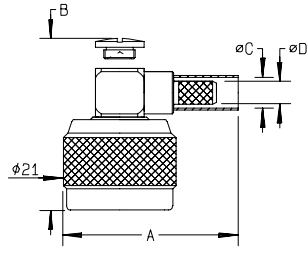


Fig. 1

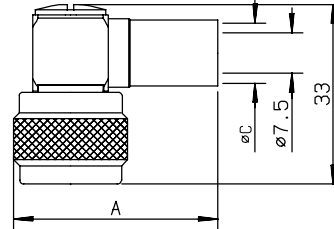


Fig. 2

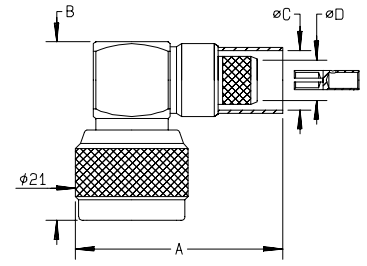


Fig. 3

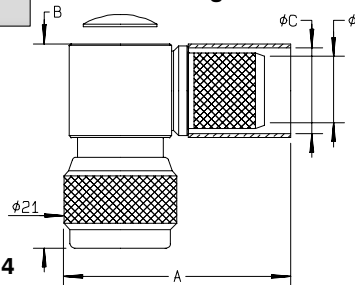


Fig. 4

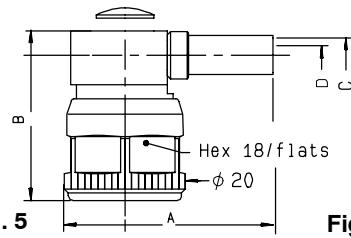


Fig. 5

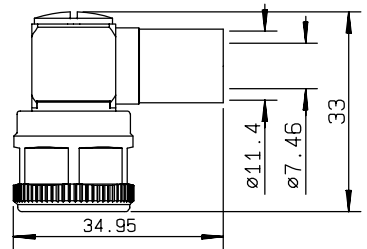


Fig. 6

cable group	part number	fig.	dimensions (mm)				captured center contact	mounting	note
			A	B	C	D			
2.6 / 50 / S	R161 181 000	1	29.5	28	3.25	1.7	YES	M18	
2.6 / 50 / D	R161 181 300	1	29.5	28	3.5	1.7	YES	M18	
5 / 50 / S	R161 182 000	1	34.5	28	5.41	3.1	YES	M18	LMR 200 cable
5 / 50 / S	R161 182 200								
5 / 50 / D	R161 183 000	1	34.5	28	5.8	3.1	YES	M18	
5 / 50 / D	R161 183 137	5	35	28.3	5.8	3.1	YES	M25	For intermodulation application / tool*
10 / 50 / S	R161 184 000	2	37.5		11.05		YES	M18	
10 / 50 / S	R161 185 000	3	42.4	33.2	11.05	7.46	YES	M20	Full crimp
10.3 / 50 / S	R161 184 036	2	46.25		11.05		YES	M18	LMR 400 cable
11 / 50 / D	R161 186 000	2	37.6		11.4		YES	M18	
11 / 50 / D	R161 187 000	3	42.4	33.2	11.4	7.46	YES	M20	Full crimp
11 / 50 / D	R161 186 137	6					YES	M18	For intermodulation application / tool*
15.2 / 50 / S	R161 188 200	4	42.2	39.5	15.88	11.96	YES	M19	LMR 600 cable

\* Torque wrench : R282 303 020 (page 58)

## RIGHT ANGLE PLUGS, CLAMP TYPE, FOR FLEXIBLE CABLES

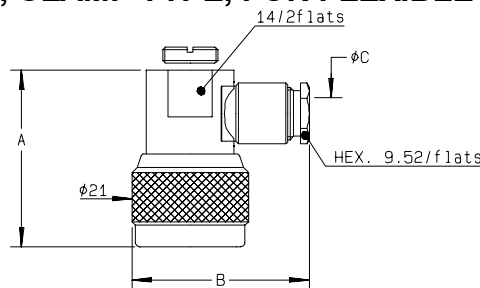


Fig. 1

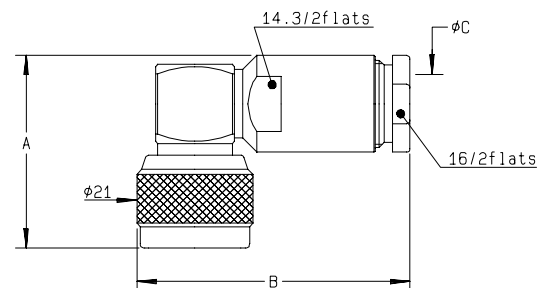
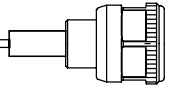


Fig. 2

cable group	part number	fig.	dimensions (mm)			captured center contact	mounting
			A	B	C		
5 / 50 / S + D	R161 157 000	1	32	32	5.6	YES	M15
10 + 11 / 50 / S + D	R161 168 000	2	34.85	49.4	11.2	YES	M16

Note : standard packaging = 50 pieces. For unit packaging, add "W" after the P/N.



### RIGHT ANGLE PLUGS, EZ FIT TYPE, FOR CORRUGATED CABLES

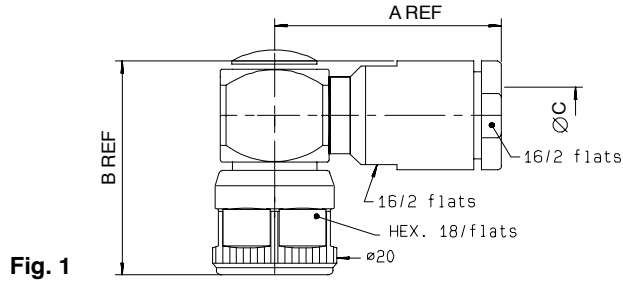


Fig. 1

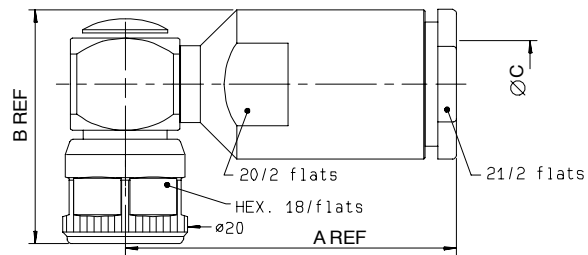


Fig. 2

cable group	part number	fig.	dimensions (mm)			captured center contact	mounting
			A	B	C		
1/4" superflexible corrugated	<b>R161 177 007</b>	1	36.4	34.4	7.85	YES	M23
3/8" superflexible corrugated	<b>R161 177 207</b>	2	54	38.3	11	YES	M23
1/2" superflexible corrugated	<b>R161 177 137</b>	2	54	38.3	14	YES	M23

\* Torque wrench : R282 303 020 (page 58)

### STRAIGHT JACKS, FULL CRIMP TYPE, FOR FLEXIBLE CABLES (single piece body)

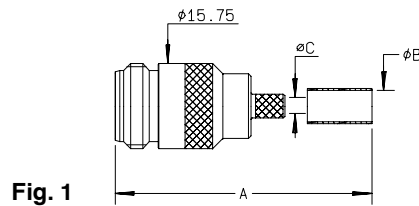


Fig. 1

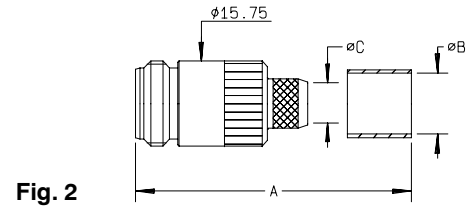


Fig. 2

cable group	part number	fig.	dimensions (mm)			captured center contact	mounting
			A	B	C		
5 / 50 / S	<b>R161 237 000</b>	1	39.3	5.41	3.11	YES	M12
5 / 50 / D	<b>R161 238 000</b>	1	39.3	5.8	3.11	YES	M12
10 / 50 / S	<b>R161 241 000</b>	2	40.6	11.05	7.46	YES	M10
11 / 50 / D	<b>R161 243 000</b>	2	40.6	11.4	7.46	YES	M10

Note : standard packaging = 50 pieces. For unit packaging, add "W" after the P/N.