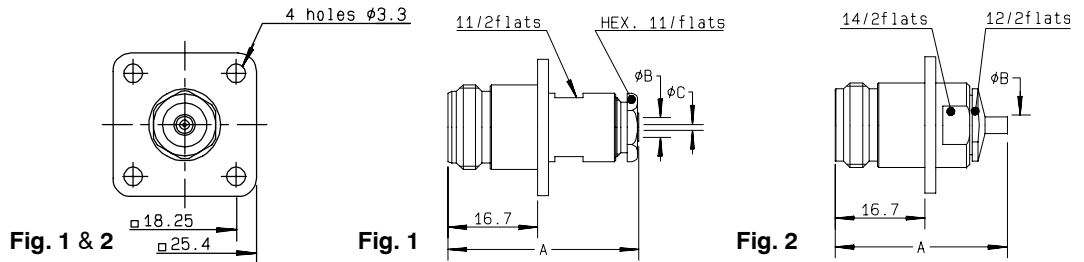
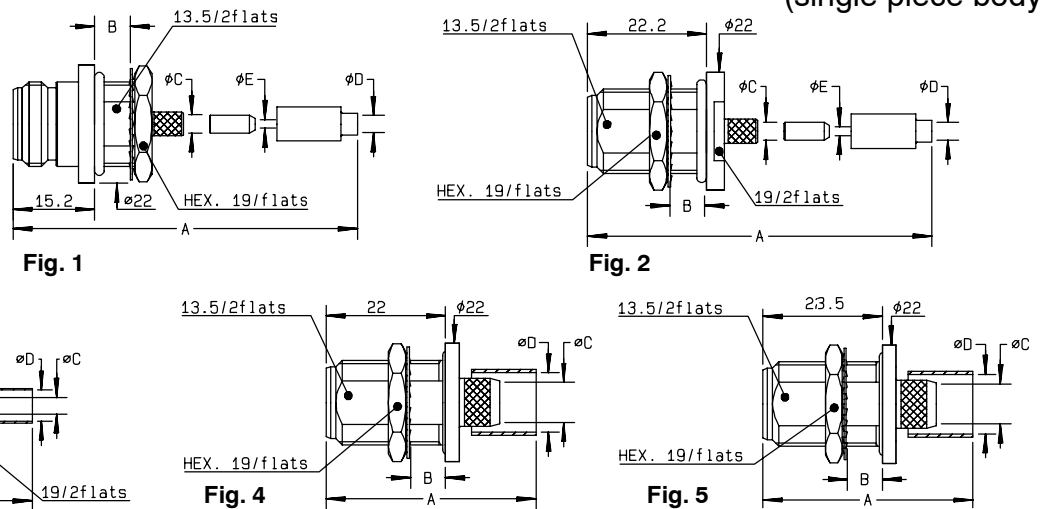


## 25.4 mm SQUARE FLANGE, STRAIGHT JACKS, FOR SEMI RIGID CABLES (25.4 mm = 1 inch)



cable group	part number	fig.	dimensions (mm)			captured center contact	mounting	panel	note
			A	B	C				
.085"	<b>R161 276 300</b>	2	32	2.25		NO	M21	P01	Solder type
.141"	<b>R161 277 000</b>	1	35.5	5.6	3.65	NO	M06	P01	Clamp type
.141"	<b>R161 277 020●</b>	1	35.5	5.6	3.65	YES	M06	P01	Clamp type
.141"	<b>R161 277 300</b>	2	32	3.65		NO	M21	P01	Solder type
.250"	<b>R161 278 300</b>	2	32	6.6		NO	M21	P01	Solder type

## BULKHEAD STRAIGHT JACKS, FULL CRIMP TYPE, FOR FLEXIBLE CABLES (PANEL SEALED) (single piece body)



cable group	part number	fig.	dimensions (mm)					captured center contact	mounting	panel	note
			A	B	C	D	E				
2 / 50 / S + D	<b>R161 309 000</b>	1	40.4	6.5	3.38	2.35	1	YES	M09	P10	Front mount
2 / 50 / S + D	<b>R161 309 200</b>	2						YES	M09	P10	Rear mount
2.6 / 50 / S + D	<b>R161 311 200</b>	1	40.4	6.5	3.38	3.25	1.63	YES	M09	P10	Front mount
2.6 / 50 / S + D	<b>R161 311 300</b>	2						YES	M09	P10	Rear mount
5 / 50 / S	<b>R161 329 130</b>	3	39.8	6.5	3.11	5.41		YES	M12	P10	LMR 200 cable / Rear mount
5 / 50 / S	<b>R161 329 000</b>	3						YES	M12	P10	Rear mount
5 / 50 / D	<b>R161 329 200</b>	3						YES	M12	P10	Rear mount
10 / 50 / S	<b>R161 331 000</b>	4	40.6	6.5	7.46	11.05		YES	M10	P10	Rear mount
10.3 / 50 / S	<b>R161 331 060</b>	5	46.88	6.5	7.46	11.05		YES	M11	P10	LMR 400 cable / Rear mount
11 / 50 / D	<b>R161 331 200</b>	4	40.6	6.5	7.46	11.4		YES	M10	P10	Rear mount
15.2 / 50 / S	<b>R161 331 400</b>	5	49.9	6.5	11.96	15.88		YES	M11	P10	LMR 600 cable / Rear mount / Solder type center contact

● Upon request

Note : standard packaging = 50 pieces. For unit packaging, add "W" after the P/N.

## BULKHEAD STRAIGHT JACKS, CLAMP TYPE, FOR FLEXIBLE CABLES (PANEL SEALED)

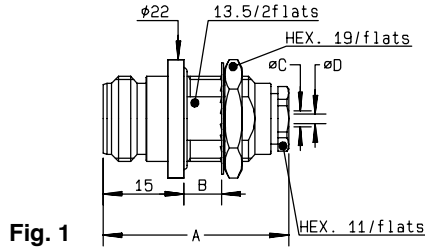


Fig. 1

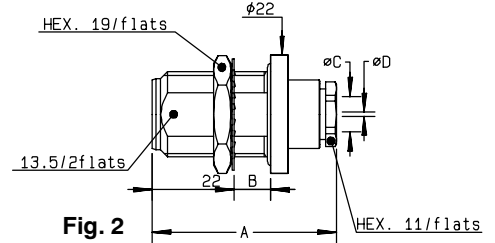


Fig. 2

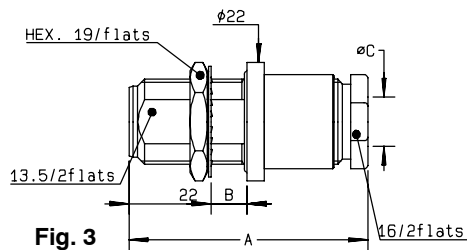


Fig. 3

cable group	part number	fig.	dimensions (mm)				captured center contact	mounting	panel	note
			A	B	C	D				
2.6 / 50 / S + D	<b>R161 321 000</b>	1	34.3	8	3.1	1.7	YES	M01	P10	Front mount
2.6 / 50 / S + D	<b>R161 322 000</b>	2	34.3	6.5	3.1	1.7	YES	M01	P10	Rear mount
5 / 50 / S + D	<b>R161 325 000</b>	2	35.4	6.5	5.6		YES	M01	P10	Rear mount
10 + 11 / 50 / S + D	<b>R161 332 000</b>	3	43	6.5	11.2		NO	M04	P10	Rear mount

## BULKHEAD STRAIGHT JACKS, EZ FIT TYPE, FOR CORRUGATED CABLES

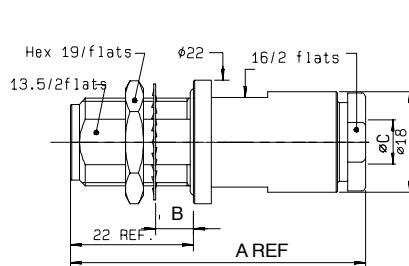


Fig. 1

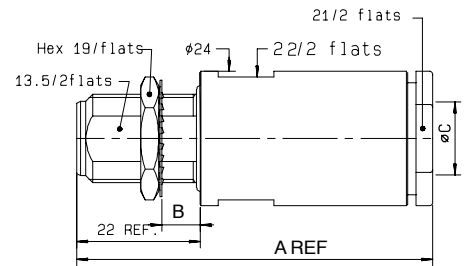


Fig. 2

cable group	part number	fig.	dimensions (mm)			captured center contact	mounting	panel
			A	B	C			
1/4" superflexible corrugated	<b>R161 341 007</b>	1	52.7	6.5	7.9	YES	M22	P10
3/8" superflexible corrugated	<b>R161 341 207</b>	2	66	6.5	11	YES	M22	P10
1/2" superflexible corrugated	<b>R161 341 407</b>	2	66	6.5	14	YES	M22	P10

Note : standard packaging = 50 pieces. For unit packaging, add "W" after the P/N.